



New Tube-Head RK 46-6





RK 46-6



an engraved
consecutively number
on the top

fig. 1

new

RK 455-6

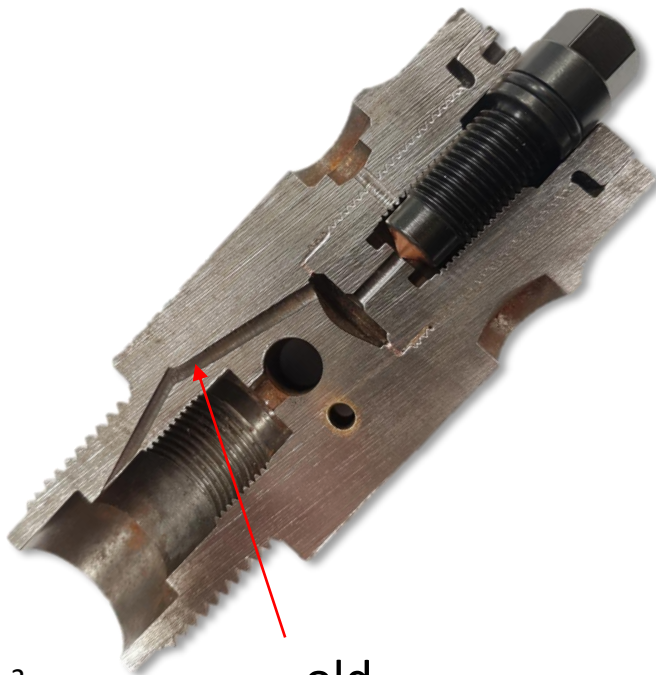


fig. 2

old



new Valve-Spindel for longer operating time



the old version can be used for the new RK 46-6 as well

The new Tube-Head RK 46-6:

- Without the inset for the Valve-Spindel
- Straight filling channel for more safety (fig. 1)
- Usable with all DG-Tubes