



PROJECT FACTS

Address: Willy-Schenk-Straße 9, 73527 Schwäbisch Gmünd, Germany. Client: Christliches Gästezentrum Württemberg. Completion: 2006. Building type: cultural. Construction engineer façade: Ohligschläger und Ribarek.



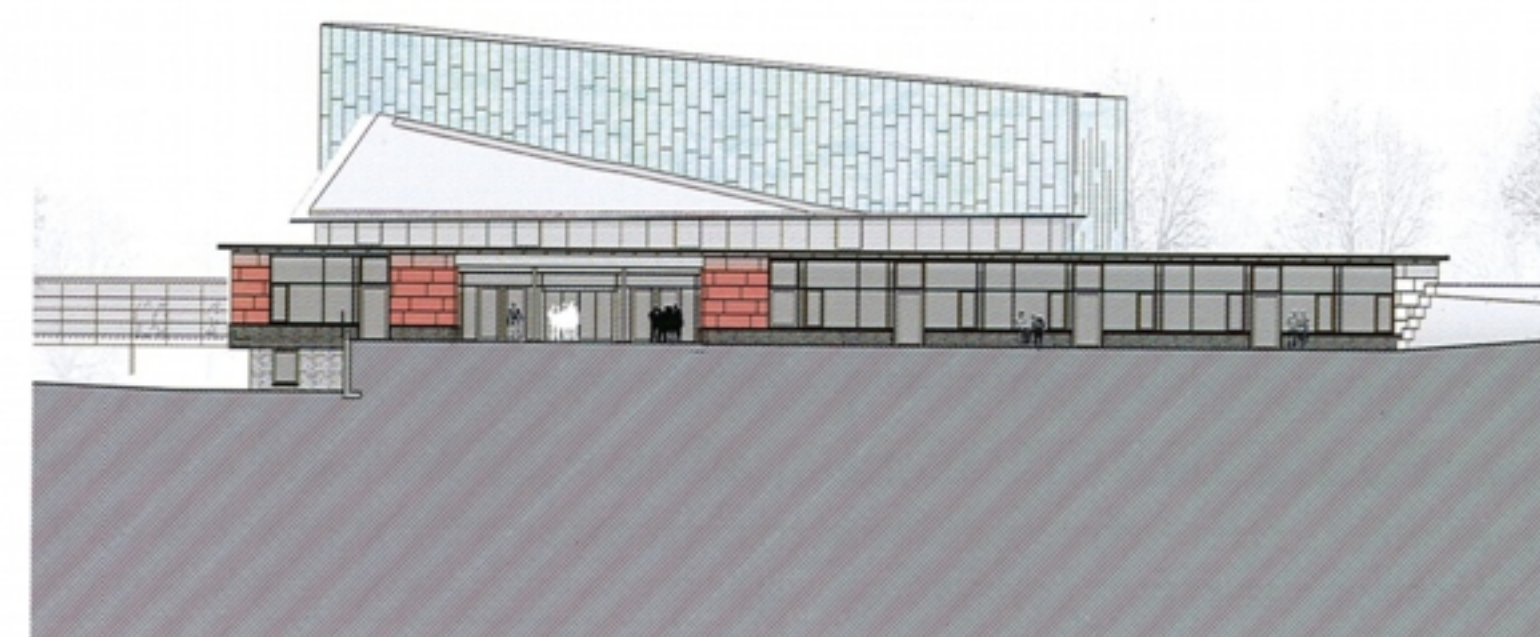
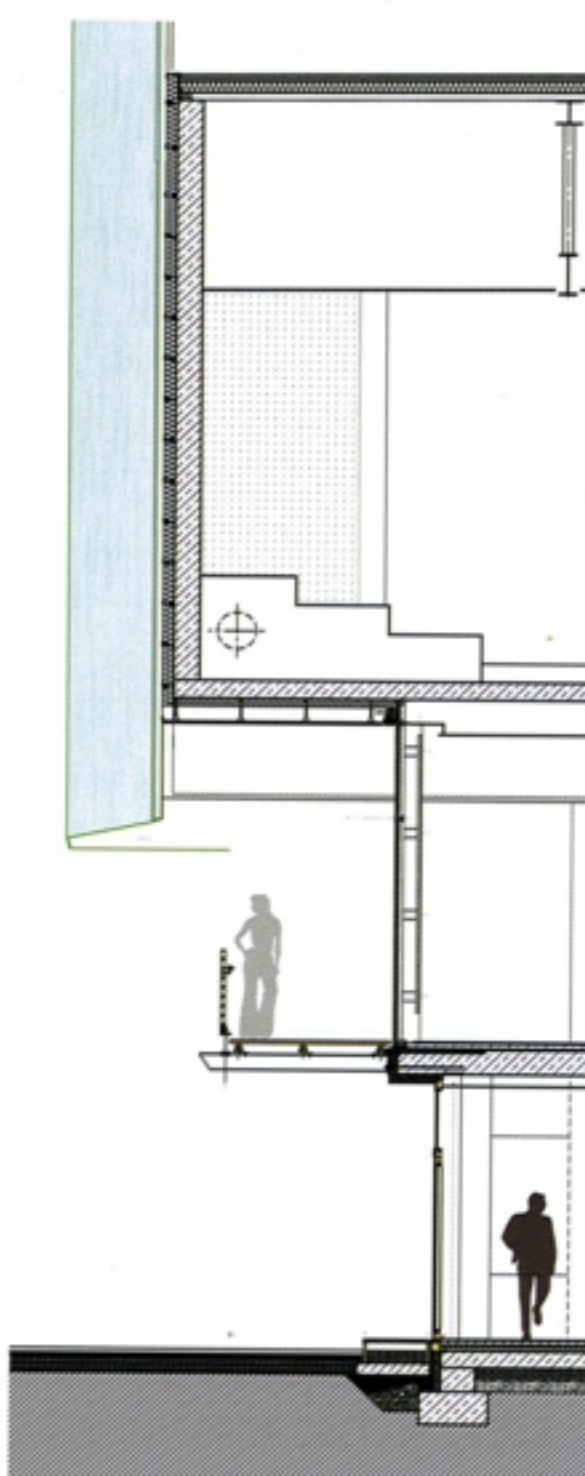
↑ | South side



↑ | Detail copper façade
↓ | Section façade



↑ | Interior façade
↓ | View from north
↓↓ | Main elevation



Forum Schönblick

Schwäbisch Gmünd

The newly built "Forum Schönblick" is embedded in a park landscape. The hall structure consists of a closed volume to the north, covered in a pre-patinated copper façade. For fire safety reasons, the substructure is a metal construction with profiled sheeting. The natural copper color changes throughout the day. Towards the south, the building opens up towards the extensive landscape. The glass façade is a light mullion and transom structure. The steel profile substructure is minimized to ensure maximum transparency. The glazing in combination with the sun screen control ensures maximum energy gain, while also preventing overheating in the summer.

CONSTRUCTION FACTS

Structure: new building, in context. Construction type: rear ventilated curtain wall. Material: aeruginous copper. Fixing: on metal substructure. Insulation: R-value: 0.20 W/(m²K).