

STL 350 / 390 / 430 / 480 / 800

NEUE OPTION: ST 230 / 270 / 320



EDELSTAHL-ROLLEN

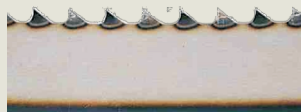
mit doppeltem Anschlag.

Modell	Band (mm)
ST 200	1.600
ST 230	1.740
ST 270	1.985
ST 320	2.340
STL 350	2.500
STL 390	2.910
STL 430	3.155
STL 480	3.500
STL 800	3.715

BAND FÜR GEFRORENES



BAND FÜR KNOCHEN

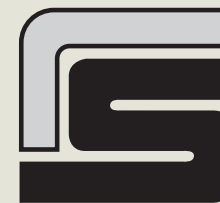


BAND FÜR FLEISCH



Rudolf Schad
GmbH & Co. KG

Schulstraße 7
36154 Hosenfeld
Telefon (06650) 9621-0
Telefax (06650) 9621-98
E-Mail: info@r-schad.de
Internet: www.r-schad.de



Rudolf Schad
GmbH & Co. KG



ST 200/230/270/320

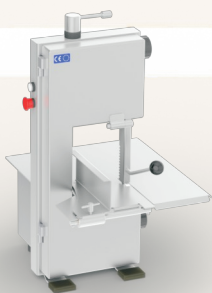


STL 350/390/430/480/800

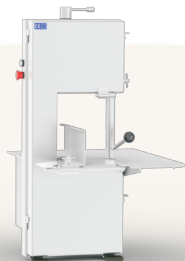


MOD.	Band (mm)	Schnitt (mm)	
		HÖHE	SEITE
ST 200	1600	180	175
ST 230	1740	220	195
ST 270	1985	270	225
ST 320	2340	320	275

ST 200
Pusher



ST 230/270/320
Pusher



ST 230/270/320
Schiebetisch



ST-P 230/270/320
Sockel



ST-P 230/270/320
Sockel auf Rädern

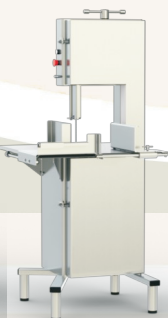


MOD.	Band (mm)	Schnitt (mm)	
		HÖHE	SEITE
STL 350	2500	350	275
STL 390	2910	400	335
STL 430	3155	420	375
STL 480	3500	480	425
STL 800	3715	550	700

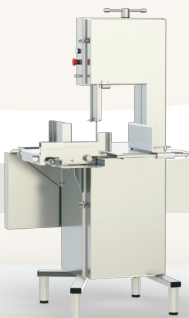
STL - F
Fester Tisch
Pusher



STL - F
Fester Tisch
Schiebetisch



STL - M
Rollenlager-
schiebetisch



STL - R
Schachttisch



STL - B
Konsolen Tisch



STL - H
Sonderschnitthöhe



STL 800 - F
Fester Tisch

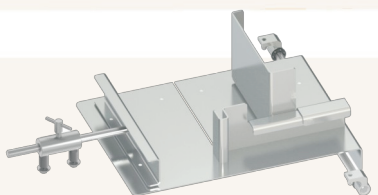


STL 800 - M
Rollenlagerschiebetisch



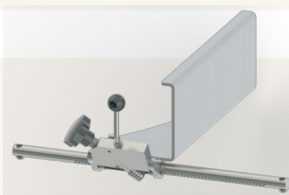
ST - STL

Schiebetisch



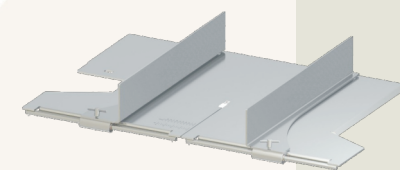
STL

Verstellbarer Portionieranschlag



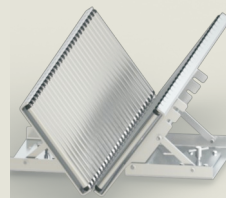
ST - STL

Doppelter Portionieranschlag



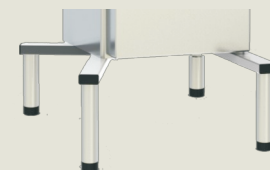
STL

Klappbarer Rollentisch



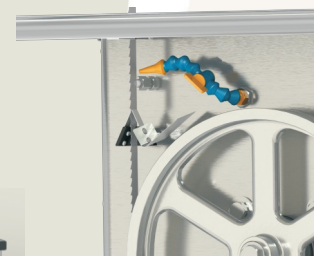
STL - ST-P

Erhöhte Standfüße



STL

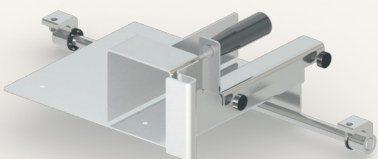
Bandkühlung



**O
P
T
I
O
N
E
N**

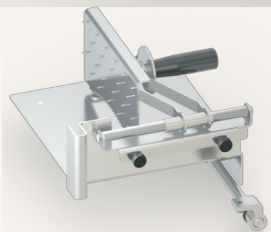
ST - STL

Schutzeinrichtung für Schiebetisch



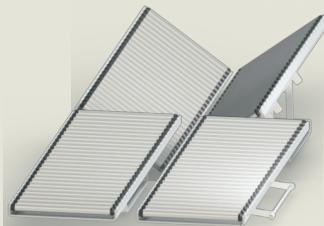
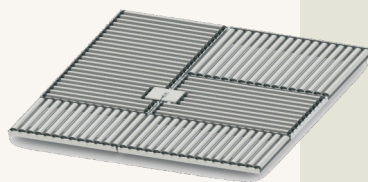
ST - STL

Schiebetisch mit Pusher



STL

Rollentisch



STL - ST-P

Rollen

