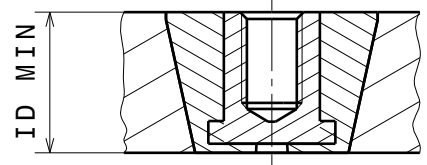
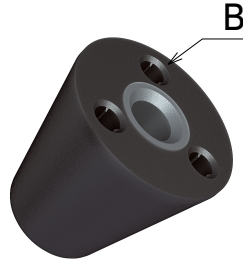
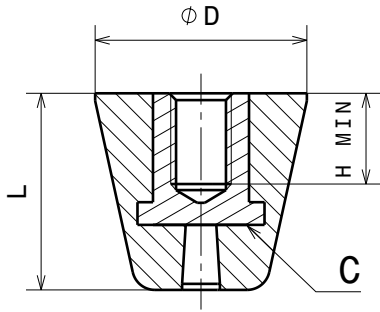


EJOT TSSD® Z001



INSERT EQUIVALENT TO NAS1832

THREAD AND DIMENSION DATA (DIMENSIONS IN INCH, BRACKETS ARE IN MILLIMETER, MASS IN GRAM)

CODE	DESIGNATION	THREAD CLASS 2B	D	L	ID MIN	H MIN	MASS	TOOLING
01	6-32 UNC	.1380-32 UNC	.551 (14.0)	.512 (13.0)	.394 (10.0)	.248 (6.3)	3.38	T-Z001-01
02	8-32 UNC	.1640-32 UNC	.551 (14.0)	.512 (13.0)	.394 (10.0)	.248 (6.3)	3.31	T-Z001-01
03	10-32 UNF	.1900-32 UNF	.551 (14.0)	.512 (13.0)	.394 (10.0)	.248 (6.3)	3.03	T-Z001-01

POLYMER MATERIAL

CODE	MATERIAL	TRADE NAME	COLOR	SPEC.
1	PA66 GF35	AKROLOY PA K17 FR BLACK (5762)	BLACK	-

INSERT MATERIAL AND FINISH DATA

CODE	MATERIAL	SPEC.M.	FINISH	SPEC.F.
01	STAINLESS STEEL 1.4303	EN 10088-3	-	-

NOTES:

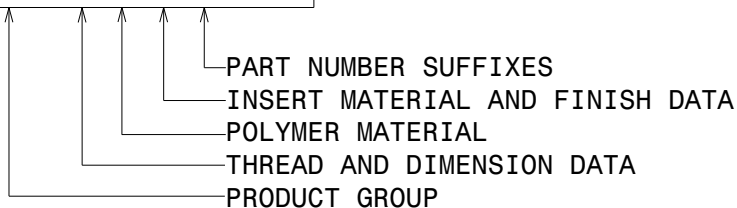
1. THREADS PER AS8879.
2. THREAD LOCK BY ELLIPTICAL DEFORMATION PER NASM25027. CORROSION RESISTANT STEEL INSERT WITHOUT PLATING OR LUBRICANT WILL BE TESTED USING A PASSIVATED CORROSION RESISTANT STEEL BOLT OR SCREW.
3. INSERT TOLERANCES UNLESS OTHERWISE SPECIFIED: XXX= ±.01 (±0.25)
XX= ±.02 (±0.5)
4. TOLERANCES OF D AND L:
D= +.02 (+0.5)
L= ±.02 (±0.5)
5. SELECT A SCREW OR BOLT WHICH LEAVES ENOUGH CLEARANCE TO THE BOTTOM OF THE INSERT.
6. DIMENSION IN INCH UNLESS VALUES IN BRACKETS ARE IN MILLIMETER. DIMENSION OF MASS IS GRAM.
7. LABEL 'B' (GEOMETRY FOR INSTALLATION TOOL) IS AT THE DISCRETION OF THE MANUFACTURER.
8. DRILL DEPTH OF INSERT IS AT THE DISCRETION OF THE MANUFACTURER.
9. LABEL 'C' BOTTOM FLANGE IS AT THE DISCRETION OF MANUFACTURER.
10. THE MASS APPLIES TO THE UNINSTALLED PRODUCT AND IS EXTRACTED FROM THE CAD-MODEL.
11. THIS DATASHEET DOES NOT REPLACE ORIGINAL SINGLE PART DRAWINGS.

PART NUMBER SUFFIXES

CODE	DESCRIPTION
0	THREAD LOCK PER NASM25027
1	NON SELF-LOCKING THREAD

EXAMPLE PART NUMBER

Z001 01 1 01 0



FOR THIS DRAWING WE RESERVE ALL RIGHTS. WITHOUT OUR PERMISSION IT MAY NEITHER BE COPIED NOR MADE ACCESSIBLE TO THIRD PERSONS. ALL PATENT, TRADEMARK AND OTHER RIGHTS IN AND TO THIS DRAWING AND DESIGN ARE EXPRESSLY RESERVED BY EJOT.

03	N.M.	H MIN changed to .248(6.3) was .250(6.35)		25.04.18	M.Göring	
02	N.M.	Steel removed as insert material, reference to NAS1832 changed from according to equivalent		03.04.18	M.Göring	
01	N.M.	Designation was DASH NO. NAS1832		09.11.17	M.Göring	
ISSUE	MODIFICATION BY CAD ONLY			DATE	CHANGED	
CONSTRUCTED	27.06.17	N.Mueller	TITLE	EJOT TSSD® WITH THREADED INSERT EQUIVALENT TO NAS1832		
DRAWN	27.06.17	N.Mueller		GENERAL PLASTIC TOLERANCES DIN 16742-TG6		
APPROVED	27.06.17	D.Kittel		DIMENSIONS IN INCH (MM)		
EJOT®	CAD SYSTEM	DOCUMENT NO. EJOT	PRODUCT GROUP	VERSION	SCALE	ORIGINAL
	CATIA V5 R24	6170115	Z001	02	2:1	A4