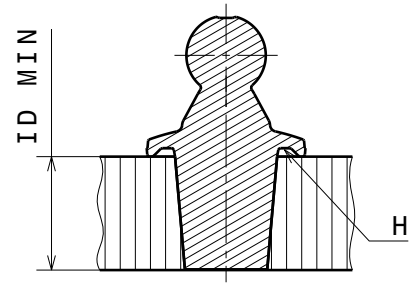
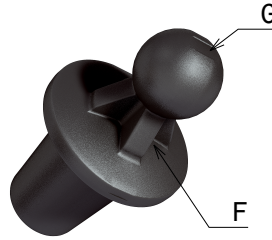
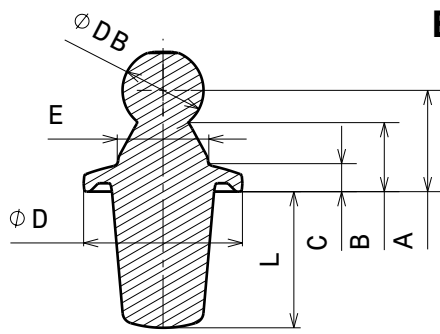


EJOT TSSD® Z003



DIMENSION DATA (DIMENSIONS IN INCH, BRACKETS ARE IN MILLIMETER, MASS IN GRAM)

CODE	D	L	DB	A	B	C	E	ID MIN	MASS	TOOLING
01	.551 (14.0)	.472 (12.0)	.281 (7.14)	.352 (8.93)	.232 (5.9)	.089 (2.27)	.311 (7.9)	.433 (11.0)	1.70	T-Z003-01

POLYMER MATERIAL

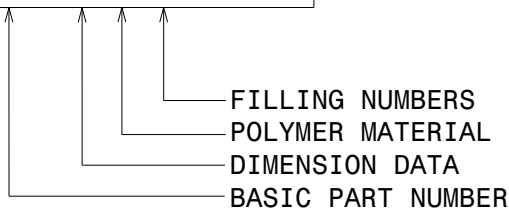
CODE	MATERIAL	TRADE NAME	COLOR	SPEC.
1	PA66 GF35	AKROLOY PA K17 FR BLACK (5762)	BLACK	-

NOTES:

1. THE INSTALLATION PARAMETERS ARE DEPENDENT OF THE COMPONENT PART MATERIAL AND HAVE TO BE DETERMINED BEFORE USE.
2. TOLERANCES OF D, DB AND L:
 $D = \pm .01 (\pm 0.25)$
 $DB = +.003 (+0.06) - .006 (-0.14)$
 $L = \pm .02 (\pm 0.5)$
3. DIMENSION IN INCH UNLESS VALUES IN BRACKETS ARE IN MILLIMETER. DIMENSION OF MASS IS GRAM.
4. THE MASS APPLIES TO THE UNINSTALLED PRODUCT AND IS EXTRACTED FROM THE CAD-MODEL.
5. LABEL 'F' (GEOMETRY FOR INSTALLATION TOOL) IS AT THE DISCRETION OF THE MANUFACTURER.
6. LABEL 'G' (INJECTION MOLDING FEATURE) IS AT THE DISCRETION OF THE MANUFACTURER.
7. LABEL 'H' (FLUTING GEOMETRY) IS AT THE DISCRETION OF THE MANUFACTURER.
8. THE DIMENSIONS ARE EXTRACTED FROM CAD-MODEL.
9. DECREASING OF ID MIN HAS TO BE CHECKED INDIVIDUALLY.
10. THE DATASHEET DOES NOT REPLACE ORIGINAL SINGLE PART DRAWINGS.

EXAMPLE PART NUMBER

Z003 01 1 000



FOR THIS DRAWING WE RESERVE ALL RIGHT. WITHOUT OUR PERMISSION IT MAY NEITHER BE COPIED NOR MADE ACCESSIBLE TO THIRD PERSONS. ALL PATENT, TRADEMARK AND OTHER RIGHT IN AND TO THIS DRAWING AND DESIGN ARE EXPRESSLY RESERVED BY EJOT.

ISSUE	MODIFICATION BY CAD ONLY				DATE	CHANGED
CONSTRUCTED	01.09.17	N.Mueller	TITLE		GENERAL PLASTIC TOLERANCES	
DRAWN	01.09.17	N.Mueller	EJOT TSSD® WITH BALLHEAD		DIN 16742-TG6	
APPROVED	01.09.17	D.Kittel			DIMENSIONS IN INCH (MM)	
EJOT®	CAD SYSTEM	DOCUMENT NO. EJOT	PRODUCT GROUP	VERSION	SCALE	ORIGINAL
	CATIA V5 R24	6170132	Z003	00	3:2	A4