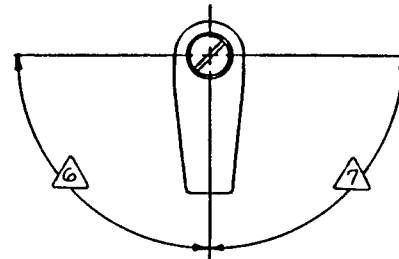
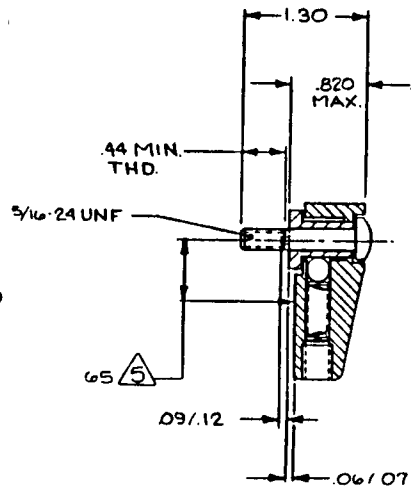
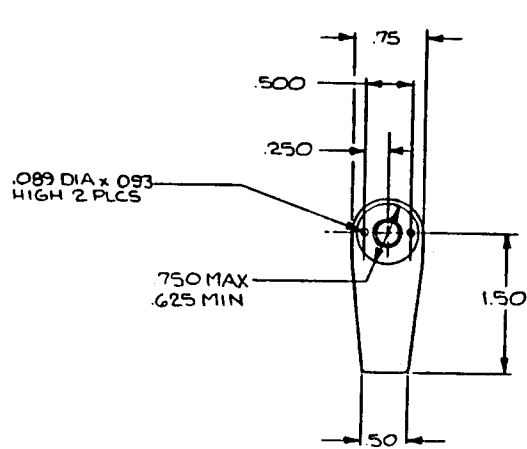


The information and data herein are the property of Skylock Industries Incorporated and is the property of Skylock Industries Incorporated. All patent, proprietary, design, manufacturing, reproduction, use and sales rights thereto, and to any article disclosed therein except to the extent rights are expressly granted to others. The foregoing does not apply to vendor proprietary parts.

zone	rev	description	date	approved
	NC	PRODUCTION RELEASE	11-25-88	TS
	A	-Z WAS -S	1-21-94	



2 MAT'L: STUD; 17-4 PH CRES, CAM; CRES, ALL OTHER PARTS; 300 SERIES STAINLESS STEEL

1. REMOVE ALL BURRS AND SHARP CORNERS.

NOTES: UNLESS OTHERWISE SPECIFIED.

used on	next assy	final assy
application		qty reqd

Interpret drawing in accordance with MIL-B-1000  
 remove all burrs break sharp edges .010 max  
 all corner and fillet radii to be .020 max

qty reqd	part no	description	material	size	specification	item no
-2		1/4 TURN RETAINER				
-1		1/4 TURN RETAINER				

parts list

unless otherwise specified	drawn by	11-25-88	Skylock Industries Incorporated Monrovia California
dimensions are in inches	checked		
tolerances on	angles	drilled holes	
.12 ± .01	± 0° 30'	AND 10087	
.002 ± .010			

1/4 TURN RETAINER

size	code ident no	drawing no	rev
C	51941	20625	A
scale	1 To 1	sheet	1 of 1