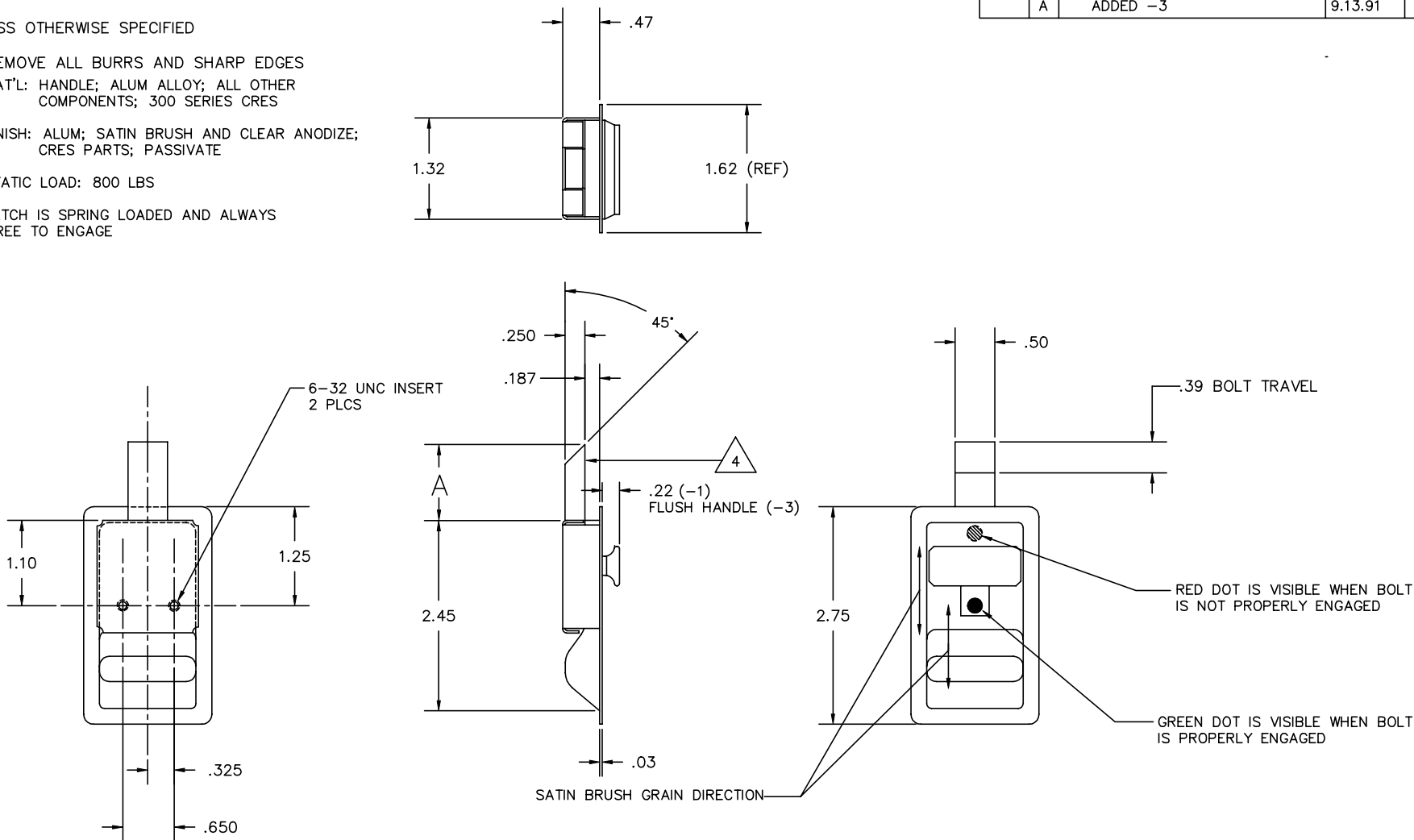


THE INFORMATION AND DESIGN HEREIN WAS ORIGINATED BY AND IS THE PROPERTY OF SKYLOCK INDUSTRIES INCORPORATED. SKYLOCK INDUSTRIES INCORPORATED RESERVES ALL PATENT, PROPRIETARY, DESIGN MANUFACTURING, REPRODUCTION, USE AND SALES RIGHTS THEREON, AND TO ANY ARTICLE DISCLOSED THEREIN EXCEPT TO THE EXTENT RIGHTS ARE EXPRESSLY GRANTED TO OTHERS. THE FOREGOING DOES NOT APPLY TO VENDOR PROPRIETARY PARTS.

REVISIONS				
ZONE	LTR.	DESCRIPTION	DATE	APPROVED
	NC	PRODUCTION RELEASE	8.26.91	SC
	A	ADDED -3	9.13.91	SC

NOTES: UNLESS OTHERWISE SPECIFIED

1. REMOVE ALL BURRS AND SHARP EDGES
2. MAT'L: HANDLE; ALUM ALLOY; ALL OTHER COMPONENTS; 300 SERIES CRES
3. FINISH: ALUM; SATIN BRUSH AND CLEAR ANODIZE; CRES PARTS; PASSIVATE
4. STATIC LOAD: 800 LBS
5. LATCH IS SPRING LOADED AND ALWAYS FREE TO ENGAGE



.82		-3	LATCH ASSY		
.82		-1	LATCH ASSY		
A	QTY. REQ'D	PART / IDENT NO.	DESCRIPTION	MATERIAL / SPECIFICATION	ITEM NO.
	UNLESS OTHERWISE SPECIFIED: DIMENSIONS ARE IN INCHES		CONTRACT NO.	 SKYLOCK INDUSTRIES INCORPORATED MONROVIA, CALIFORNIA, USA	
	TOLERANCES		CUSTOMER		
	DECIMALS	.XX ±.03	ANGULAR	± 0 30'	
	.XXX ±.010				
	DO NOT SCALE DRAWING		DRAWN BY	DATE	
			S. CSIK		
			CHECK		
	NEXT ASSY	FINAL ASSY	DESIGN	LATCH ASSY- SLAM	
	USED ON		DESIGN ACTIVITY		
	FINISH	ACT WT	CALC WT	SIZE	FSCM NO.
				C	51941
				DRAWING NO.	REV.
				20724	A
				SCALE 1/1	RELEASE DATE 8.26.91
				SHEET 1	OF 1