

THE INFORMATION CONTAINED HEREIN IS UNCLASSIFIED BY AND IS THE PROPERTY OF SKYLOCK INDUSTRIES, INCORPORATED. UNLESS OTHERWISE SPECIFIED, ALL DIMENSIONS ARE IN INCHES. FOR REVISIONS, SEE THE REVISIONS SECTION OF THIS DRAWING. USE THE SALES BULLETIN TITLED "AND TO ANY ARTICLE REFERENCED THEREIN EXCEPT TO THE EXTENT NOTED OTHERWISE. THE FOLLOWING INFO DOES NOT APPLY TO NON-FERROUS PARTS.

SEE SHFT.	MFG P/N	A	B	C	D	E	F	G	H	I
2	20065-1	.300	.20	.12	---	---	---	.62	.270/.280 DIA X 100' CSK	---
2	20065-3	.300	.20	.12	---	---	---	.62	NO. 30 (.128) DIA	---
2	20065-5	.300	.20	.12	---	---	---	.62	.236 DIA X 120' CSK	---
2	20065-7	.300	.20	.12	---	---	---	.59	.160 DIA THRU, .270 DIA X 100' DIMPLE	---
2	20065-9	.260	.20	.12	---	---	---	.62	.270/.280 DIA X 100' CSK	---
2	20065-11	.300	.20	.093	---	---	---	.59	NO. 30 (.128) DIA	---
2	20065-13	.300	.20	.12	---	---	---	.62	.220 DIA X 100' CSK	---
3	20065-15	.300	.453	.15	.080	.080	.98	---	.285/.295 DIA X 100' CSK	---
3	20065-17	.300	.17	.25	---	.05	.89	---	.250 DIA X 100' CSK	---
3	20065-18	.300	.17	.19	---	.05	.83	---	.250 DIA X 100' CSK	---
3	20065-21	.300	.17	.25	---	.05	.72	---	.250 DIA X 100' CSK	---
3	20065-23	.310	.17	.19	---	.05	.66	---	.250 DIA X 100' CSK	---
3	20065-25	.300	.17	.19	---	.05	.83	---	.270/.280 DIA X 100' CSK	.090
3	20065-27	.300	.453	.15	---	.080	.98	---	.240/.250 DIA X 120' CSK	---
2	20065-29	.300	.20	.218	---	---	---	.62	NO. 30 (.128) DIA	---
3	20065-31	.370	.453	.15	---	.080	.98	---	.285/.295 DIA X 100' CSK	---
2	20065-33	.370	.20	.12	---	---	---	.62	.270/.280 DIA X 100' CSK	---
2	20065-35	.270 MAX	.20	.12	---	---	---	.62	.270/.280 DIA X 100' CSK	---
3	20065-37	.310	.17	.34	---	.05	.81	---	.250 DIA X 100' CSK	---
2	20065-39	.300	.453	.19	---	---	---	.98	.285/.295 DIA X 100' CSK	---
3	20065-41	.370	.20	.13	---	.05	.62	---	.270/.280 DIA X 100' CSK	.090
2	20065-43	.44	---	.180	---	---	---	.860	---	---
3	20065-45	.310	.17	.24	---	.05	.83	---	.270/.280 DIA X 100' CSK	.090
2	20065-47	.370	.453	.19	---	---	---	.98	.285/.295 DIA X 100' CSK	---
3	20065-49	.300	.20	.22	---	.08	.80	---	.270/.280 DIA X 100' CSK	---

SEE SHEET 2 AND 3 FOR DETAILS

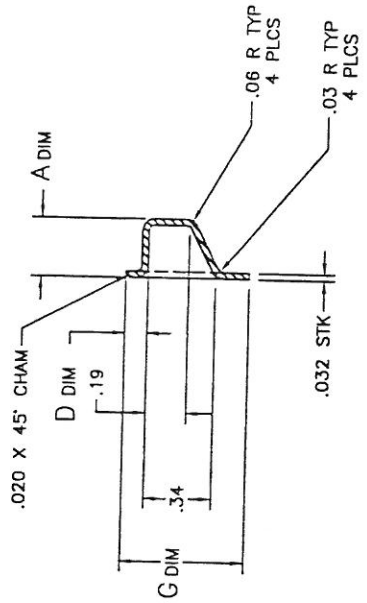
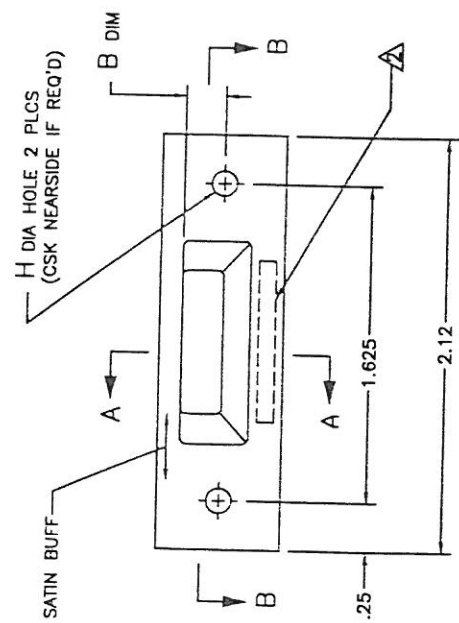
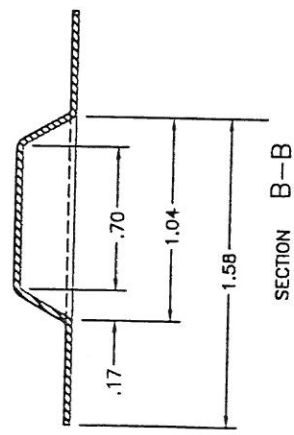
- UNLESS OTHERWISE SPECIFIED:
1. REMOVE ALL BURRS AND SHARP EDGES.
 2. IDENTIFY PART, INKSTAMP PART IN AREA SHOWN (FAR SIDE)
 3. MAT'L: 304 CRES. .032 SHT, PER QQ-S-766 OR EQUIV.
 4. SATIN BUFF NOTED SURFACE, AND PASSIVATE PER AMS-QQ-P-35, TYPE VI OR VII.
 5. PER FAR 45.15, PARTS WILL BE IDENTIFIED WITH:
 1. FAA-PMA.
 2. SKYLOCK IND. INC.
 3. PART NO.
 4. AIRCRAFT ELIGIBILITY.

ZONE	LT#	DESCRIPTION	DATE	APPROVED
	M	SEE ECN M	9/11/98	T. CSIK
	N	SEE ECN N	2/5/99	T. CSIK
	P	SEE ECN P	10/19/99	T. CSIK
	R	SEE ECN R	24APR01	S. C.

PART LIST		DESCRIPTION		INITIAL SIZE APPLICATION		ETCH NO.	
UNLESS OTHERWISE SPECIFIED DIMENSIONS ARE IN INCHES		DRAWN BY S. CSIK		9/9/98			
TOLERANCES ON DIMENSIONS ARE: .0005		CHECKED BY T. CSIK		9/11/98			
HOLE DIMENSIONS ARE: .0005		ENGINEER T. CSIK		9/11/98			
HOLE DIMENSIONS ARE: .0005		DATE		9/11/98			
HOLE DIMENSIONS ARE: .0005		BY S. C.		9/11/98			
HOLE DIMENSIONS ARE: .0005		BY J.V.		10/9/98			
DO NOT SCALE THIS DRAWING		USED ON		20065 STRIKER			
INITIALS - OTHER		SCALE		NONE		PART 1 OF 3	
MANUFACTURED IN ACCORDANCE WITH SKYLOCK QUALITY CONTROL MANUAL QC-801		SIZE		C 51941		20065	
		CODE IDENT. NO. DRAWING REV.		VT.		R	

THE INFORMATION CONTAINED HEREIN IS UNCLASSIFIED EXCEPT WHERE SHOWN OTHERWISE AND IS THE PROPERTY OF SKYLOCK INDUSTRIES INCORPORATED. IT IS TO BE CONTAINED IN THE PUBLIC DOMAIN AND IS TO BE RELEASED TO THE EXTENT PERMITTED BY LAW. ANY RIGHTS ARE EXPRESSLY RESERVED TO SKYLOCK INDUSTRIES INCORPORATED.

REVISIONS		DATE	APPROVED
NO.	DESCRIPTION		
1	SEE SHEET 1 FOR NOTES		



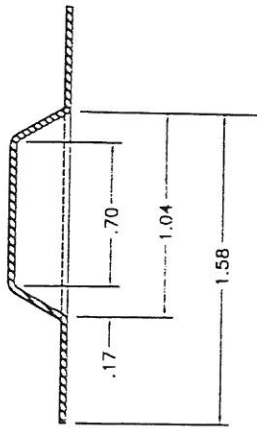
-1 THRU -13, -29, -33, -35, -39,
-43, -47, STRIKER

SKYLOCK INDUSTRIES INCORPORATED
MENLO PARK, CALIFORNIA U.S.A.

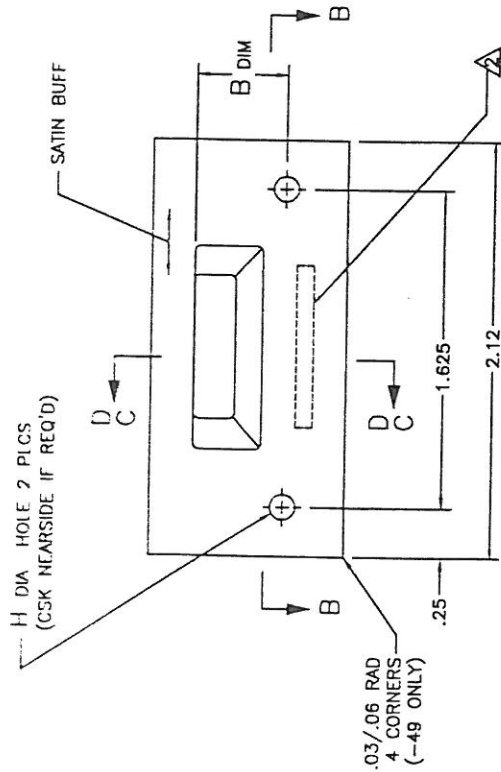
20065 STRIKER

SIZE	CODE	REV.	REV.
C	51941	20065	R
SCALE	2/1	VT.	SHEET 2 OF 3

THE INFORMATION CONTAINED HEREIN WAS OBTAINED BY AND IS THE PROPERTY OF SKYLOCK INDUSTRIES, INCORPORATED. SKYLOCK INDUSTRIES, INCORPORATED MAKES NO WARRANTY, EXPRESS OR IMPLIED, AS TO THE ACCURACY, COMPLETENESS OR REPRESENTATION OF THE DATA HEREIN, AND TO ANY PATENTS OR OTHER RIGHTS IN THIS INFORMATION. THE DATA HEREIN ARE EXPRESSLY GRANTED TO OTHERS. THE FOREGOING DOES NOT APPLY TO NON-PATENTABLE MATTER.

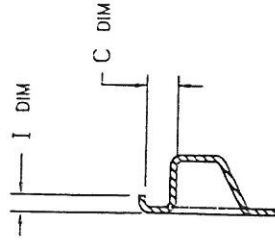


SECTION B-B



SECTION C-C

(-15 THRU -27, -31, -49)



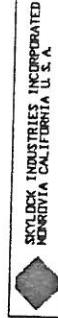
SECTION D-D

(-41 AND -45)

REVISIONS		DATE	APPROVED
ZONE	DESCRIPTION		

SEE SHEET 1 FOR NOTES

-15 THRU -27, -31, -45 AND -49 STRIKER



SKYLOCK INDUSTRIES, INCORPORATED
MORGENTHAU CALIFORNIA U.S.A.

20065 STRIKER

SIZE	C	DATE	20065	REV.	R
SCALE	2/1	DATE		REV.	