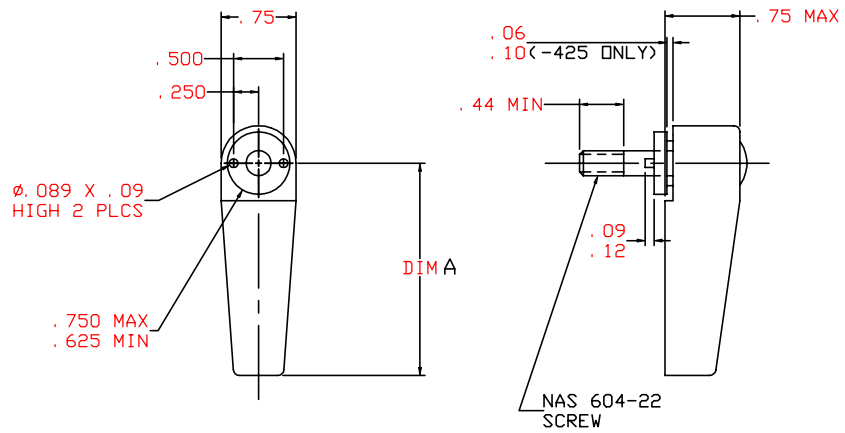


THE INFORMATION AND DESIGN HEREIN WAS ORIGINATED BY AND IS THE PROPERTY OF SKYLOCK INDUSTRIES INCORPORATED. SKYLOCK INDUSTRIES INCORPORATED RESERVES ALL PATENT, PROPRIETARY, DESIGN MANUFACTURING, REPRODUCTION, USE AND SALES RIGHTS THERE TO, AND TO ANY ARTICLE DISCLOSED THEREIN EXCEPT TO THE EXTENT RIGHTS ARE EXPRESSLY GRANTED TO OTHERS. THE FOREGOING DOES NOT APPLY TO VENDOR PROPRIETARY PARTS.

REVISIONS				
ZONE	LTR	DESCRIPTION	DATE	APPROVED
	N	SEE ECN N	12/31/98	T. CSIK



14. PER FAR 45.15. PARTS WILL IDENTIFIED WITH:
1. FAA-PMA.
 2. SKYLOCK IND. INC.
 3. PART NO.
 4. AIRCRAFT ELIGIBILITY.

- ③ SHIP WITHOUT SCREW.
 - ② 180° ROTATION DETENTED EVERY 90°.
 - ① DECORATIVE FINISH: SATIN BRUSH LENGTHWISE TO PART SURFACE & CLEAR ANODIZE PER MIL-A-8625, TYPE II, CLASS 1, OR EQUIV.
 - ⑩ 90° ROTATION LH DETENTED.
 - ⑨ 90° ROTATION RH DETENTED.
 - ⑧ DELETED.
 - ⑦ DELETED.
 - ⑥ DELETED.
 - ⑤ DETENT EVERY 90° OF ROTATION.
 - ④ LATCH TO HAVE 360° ROTATION.
 - ③ DECORATIVE FINISH: BRIGHT POLISH AND ANODIZE PER MIL-A-8625, TYPE II, CLASS 2 DYED CANDY APPLE RED, OR EQUIV.
2. FINISH: ALUM PARTS; CLEAR ANODIZE PER MIL-A-8625, TYPE II, CLASS 1, OR EQUIV.
CRES PARTS; PASSIVATE PER AMS-QQ-P-35, TYPE II, OR EQUIV.
1. MAT'L: TURN; 6061-T6/T651 PER ASTM B-221, OR EQUIV.
CAM; 303 CRES, COND. A, PER AMS-5640N OR EQUIV.
ALL OTHER PARTS; 300 SERIES CRES, COND. A, PER AMS-5640N, AMS-5639E, OR EQUIV.
- REMOVE ALL BURRS AND SHARP CORNERS.
- NOTES: UNLESS OTHERWISE SPECIFIED

SEE SHEET 2 FOR ADDITIONAL RETAINERS

3. 56	-412	RETAINER	⑩ ③	
3. 56	-411	RETAINER	⑨ ③	
2. 187	-410	RETAINER	⑩ ③	
2. 187	-409	RETAINER	⑨ ③	
1. 75	-408	RETAINER	⑩ ③	
1. 75	-407	RETAINER	⑨ ③	
2. 187	-405	RETAINER	④ ③	
3. 56	-403	RETAINER	④ ③	
1. 75	-401	RETAINER	④ ③	

DIM A	PART NO.	DESCRIPTION	MATERIAL	SIZE	APPLICATION	ITEM NO.
PARTS LIST						
UNLESS OTHERWISE SPECIFIED		DRAWN BY JEE		1/3/77		
DIMENSIONS ARE IN INCHES		CHECKED DEAN VO		12/29/98		
TOLERANCES ON		ENGINEER T. CSIK		12/31/98		
DECIMALS ANGLES DRILLED HOLES		MFG P. MATSUOKA		1/6/99		
.X ± .1 ± 0° 30' AND 10387		QC J. VIVIRITO		1/12/99		
.XXX ± .010						
DO NOT SCALE THIS DRAWING						
MATERIAL - FINISH		USED ON		SIZE	CODE IDENT. NO.	DRAWING NO.
				C	51941	20211
NEXT ASSY						REV. N
MANUFACTURE IN ACCORDANCE WITH SKYLOCK IND, INC QUALITY CONTROL MANUAL QC.001				SCALE	1:1	VT.
						SHEET 1 OF 2

SKYLOCK INDUSTRIES INCORPORATED
MONROVIA CALIFORNIA U. S. A.

20211 RETAINER

4

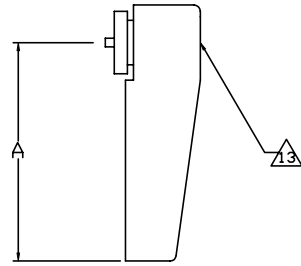
3

2

1

THE INFORMATION AND DESIGN HEREIN WAS ORIGINATED BY AND IS THE PROPERTY OF SKYLOCK INDUSTRIES INCORPORATED. SKYLOCK INDUSTRIES INCORPORATED RESERVES ALL PATENT, PROPRIETARY, DESIGN MANUFACTURING, REPRODUCTION, USE AND SALES RIGHTS THERE TO, AND TO ANY ARTICLE DISCLOSED THEREIN EXCEPT TO THE EXTENT RIGHTS ARE EXPRESSLY GRANTED TO OTHERS. THE FOREGOING DOES NOT APPLY TO VENDOR PROPRIETARY PARTS.

REVISIONS				
ZONE	LTR	DESCRIPTION	DATE	APPROVED
		SEE SHEET 1 FOR NOTES		



-450 THRU -451 ONLY

2. 187	-451	RETAINER	10	11	
2. 187	-450	RETAINER	3	10	
1. 75	-449	RETAINER	11	12	
2. 25	-448	RETAINER	3	10	
2. 25	-447	RETAINER	3	9	
2. 25	-445	RETAINER	3	12	
2. 25	-443	RETAINER	3	4	
2. 25	-441	RETAINER	3	12	13
2. 25	-439	RETAINER	3	4	13
3. 56	-438	RETAINER	3	10	13
3. 56	-437	RETAINER	3	9	13
2. 25	-436	RETAINER	3	10	13
2. 25	-435	RETAINER	3	9	13
1. 75	-433	RETAINER	3	4	13
1. 75	-431	RETAINER	3	12	13
1. 75	-430	RETAINER	3	10	13
1. 75	-429	RETAINER	3	9	13
3. 56	-427	RETAINER	3	12	13
3. 56	-426	RETAINER	3	9	13
3. 56	-425	RETAINER	3	4	<SEE F/D SHT 1 FOR SPECIAL CAM DIM>
3. 56	-424	RETAINER	10	11	
3. 56	-423	RETAINER	9	11	
2. 18	-422	RETAINER	10	11	
2. 18	-421	RETAINER	9	11	
1. 75	-420	RETAINER	10	11	
1. 75	-419	RETAINER	9	11	
3. 56	-417	RETAINER	4	11	
2. 18	-415	RETAINER	4	11	
1. 75	-413	RETAINER	4	11	

DIM A	PART NO.	DESCRIPTION	MATERIAL	SIZE	APPLICATION
PARTS LIST					

 SKYLOCK INDUSTRIES INCORPORATED
MONROVIA CALIFORNIA U. S. A.

20211 RETAINER

SIZE	CODE IDENT. NO.	DRAWING NO.	REV.
C	51941	20211	N
SCALE 1: 1		VT.	SHEET 2 OF 2

4

3

2

1