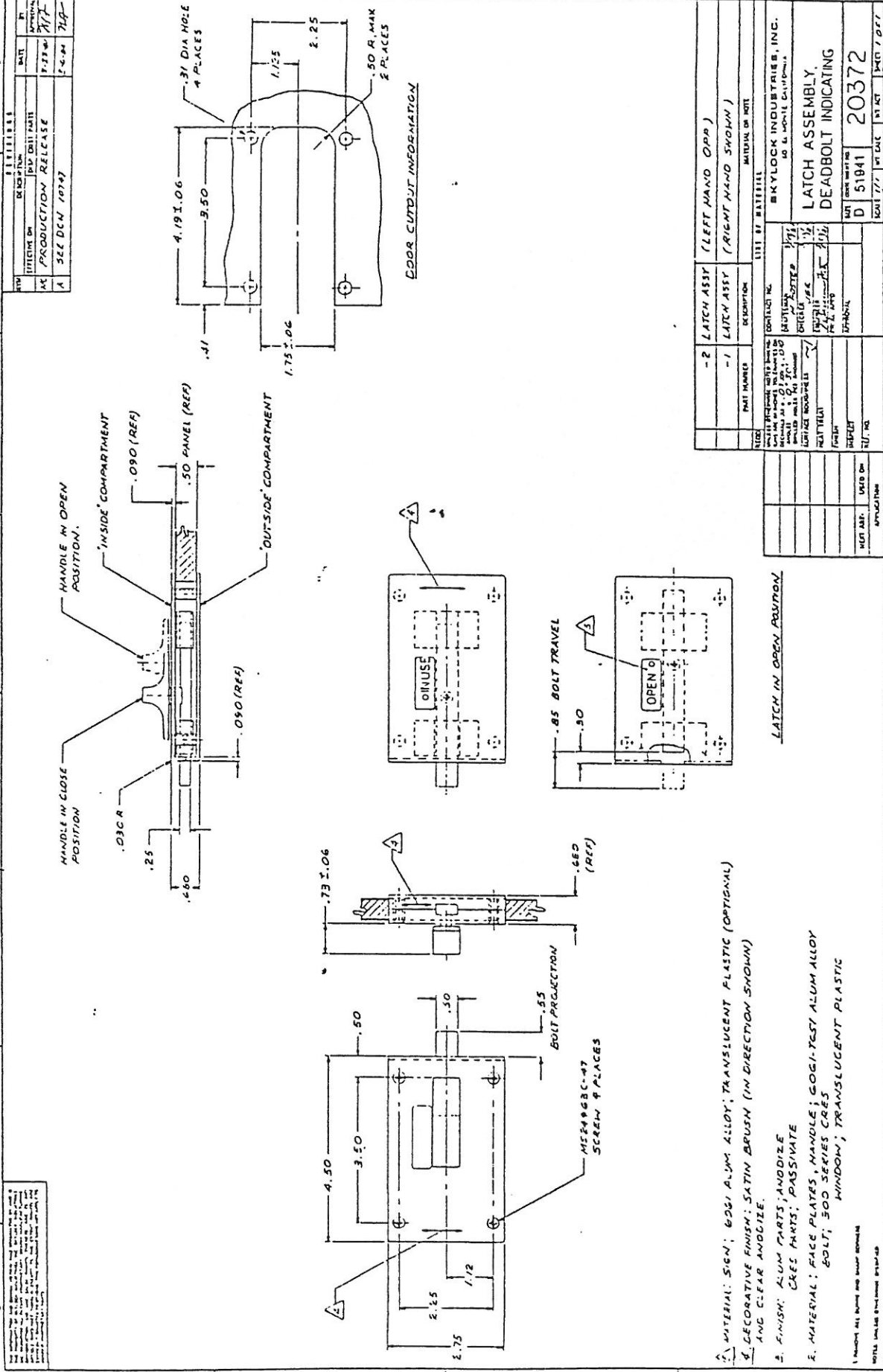


20372



| | | | |
|-----|---------|-----|-------|
| REV | DATE | BY | APP'D |
| 1 | 1/23/60 | JFL | JFL |
| 2 | 1/24/60 | JFL | JFL |

PRODUCTION RELEASE
 10747

| REV | DATE | BY | APP'D |
|-----|---------|-----|-------|
| 1 | 1/23/60 | JFL | JFL |
| 2 | 1/24/60 | JFL | JFL |

PRODUCTION RELEASE
 10747

| | | | |
|-----|---------|-----|-------|
| REV | DATE | BY | APP'D |
| 1 | 1/23/60 | JFL | JFL |
| 2 | 1/24/60 | JFL | JFL |

PRODUCTION RELEASE
 10747

| | | | |
|-----|---------|-----|-------|
| REV | DATE | BY | APP'D |
| 1 | 1/23/60 | JFL | JFL |
| 2 | 1/24/60 | JFL | JFL |

PRODUCTION RELEASE
 10747

| | | | |
|-----|---------|-----|-------|
| REV | DATE | BY | APP'D |
| 1 | 1/23/60 | JFL | JFL |
| 2 | 1/24/60 | JFL | JFL |

PRODUCTION RELEASE
 10747

| | | | |
|-----|---------|-----|-------|
| REV | DATE | BY | APP'D |
| 1 | 1/23/60 | JFL | JFL |
| 2 | 1/24/60 | JFL | JFL |

PRODUCTION RELEASE
 10747

| | | | |
|-----|---------|-----|-------|
| REV | DATE | BY | APP'D |
| 1 | 1/23/60 | JFL | JFL |
| 2 | 1/24/60 | JFL | JFL |

PRODUCTION RELEASE
 10747

| | | | |
|-----|---------|-----|-------|
| REV | DATE | BY | APP'D |
| 1 | 1/23/60 | JFL | JFL |
| 2 | 1/24/60 | JFL | JFL |

PRODUCTION RELEASE
 10747

| | | | |
|-----|---------|-----|-------|
| REV | DATE | BY | APP'D |
| 1 | 1/23/60 | JFL | JFL |
| 2 | 1/24/60 | JFL | JFL |

PRODUCTION RELEASE
 10747

| | | | |
|-----|---------|-----|-------|
| REV | DATE | BY | APP'D |
| 1 | 1/23/60 | JFL | JFL |
| 2 | 1/24/60 | JFL | JFL |

PRODUCTION RELEASE
 10747

| | | | |
|-----|---------|-----|-------|
| REV | DATE | BY | APP'D |
| 1 | 1/23/60 | JFL | JFL |
| 2 | 1/24/60 | JFL | JFL |

PRODUCTION RELEASE
 10747

| | | | |
|-----|---------|-----|-------|
| REV | DATE | BY | APP'D |
| 1 | 1/23/60 | JFL | JFL |
| 2 | 1/24/60 | JFL | JFL |

PRODUCTION RELEASE
 10747

1. MATERIAL: 6061 ALUM ALLOY; TRANSLUCENT PLASTIC (OPTIONAL)
 & DECORATIVE FINISH: SATIN BRUSH (IN DIRECTION SHOWN)
 AND CLEAR ANODIZE.
2. FINISH: ALUM PARTS; ANODIZE
 CRES PARTS; PASSIVATE
3. MATERIAL: FACE PLATES, HANDLE; 6061-T52 ALUM ALLOY
 BOLT, 500 SERIES CRES
 WINDOW; TRANSLUCENT PLASTIC

1. DRAWING ALL DIMENSIONS AND TOLERANCES SHOWN UNLESS OTHERWISE SPECIFIED
 2. TOTAL INCLUDES DIMENSIONS SHOWN