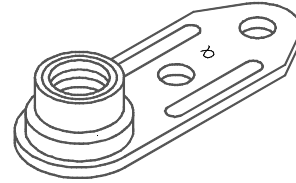


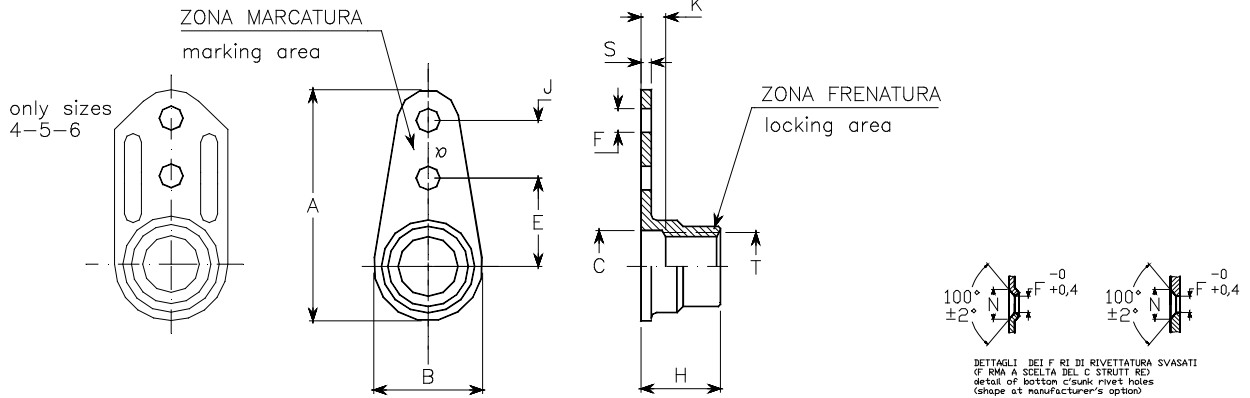
PAOLO ASTORI



PAOLO ASTORI s.r.l.  
via Mirabella 9-MAGGIATE SUP.  
I 28013-GATTICO (NO)



**O100**  
**O101**



dimensioni in mm.-dimensions in mm.

| codice<br>dimensioni<br>dimensions<br>code | filettatura<br>thread<br>T<br>toll. | A<br>max. | B<br>max. | C<br>±0,05 | E<br>±0,1 | F<br>+0,2 | J<br>±0,05 | H<br>max. | K<br>min. | N<br>±0,25 | S<br>max. | massa<br>kg x 1000 pezzi<br>mass<br>kg x 1000<br>pieces |
|--|-------------------------------------|-----------|-----------|------------|-----------|-----------|------------|-----------|-----------|------------|-----------|---|
| 03   | M3 x 0,5<br>4H6H                    | 17,7      | 6,0       | -          | 6,0       | 2,5       | 6,00       | 3,2       | -         | 4,8        | 0,7       | 0,85  |
| 04   | M4 x 0,7<br>4H6H                    | 23,7      | 8,0       | 4,2        | 8,5       | 2,5       | 8,00       | 5,2       | 1,6       | 4,8        | 1         | 1,50  |
| 05   | M5 x 0,8<br>4H6H                    | 25,2      | 9,0       | 5,2        | 9,5       | 2,5       | 8,00       | 6,2       |           | 4,8        | 1         | 1,70  |
| 06   | M6 x 1<br>4H5H                      | 27,7      | 10,0      | 6,2        | 11,0      | 3,3       | 8,00       | 7,1       |           | 6,0        | 1,25      | 2,80  |
| 08   | M8 x 1,25<br>4H5H                   | 31,0      | 12,6      | 8,4        | 13,0      | 3,3       | 8,00       | 8,2       |           | 6,0        | 1,65      | 5,10  |
| 08F  | M8 x 1<br>4H5H                      | 39,0      | 16,5      | 10,4       | 16,0      | 3,3       | 10,00      | 9,9       |           | 6,0        | 1,75      | 8,20  |
| 10   | M10 x 1,5<br>4H5H                   |           |           |            |           |           |            |           |           |            |           |   |
| 10F  | M10 x 1,25<br>4H5H                  |           |           |            |           |           |            |           |           |            |           |   |

| codice materiali<br>materials code | materiale<br>material      | finitura<br>finish  | durezza HR <sub>C</sub><br>hardness | classe<br>resistenza<br>strenght | classe temperatura<br>temperature class |
|------------------------------------|----------------------------|---|-------------------------------------|----------------------------------|---|
| <b>O100L</b>                       | W1.7214.4<br>acciaio-steel | cadmiatura+MoS <sub>2</sub><br>cadmium plating+MoS <sub>2</sub> | 43 max.                             | 900 MPa                          | 235°C                                   |
| <b>O100C</b>                       |                            | cadmiatura<br>cadmium plating                                   |                                     |                                  | 235°C                                   |
| <b>O101X</b>                       | W1.4944.4<br>lega A286     | passivazione<br>passivation                                     | 27-37                               |                                  | 425°C                                   |
| <b>O101L</b>                       |                            | passivazione+MoS <sub>2</sub><br>passivation+MoS <sub>2</sub>   |                                     |                                  | 315°C                                   |
| <b>O101A</b>                       |                            | argentatura<br>silver plating                                   |                                     |                                  | 425°C                                   |

FILETTO: profilo ISO 68; diam.interno secondo profilo MJ;  
MARCATURA:simbolo α del costruttore  
NORMA di costruzione e controllo : LN65016  
DESIGNAZIONE ASTORI:codice materiali-codice dimensioni.  
Esempio: O100C-05 indica una olivetta a disegno O100, in acciaio cadmiato, filettatura M5

THREAD:profile ISO 68;minor diameter according to MJ profile  
MARKING:manufacturer symbol α  
PROCUREMENTS specification : LN65016  
ASTORI CALL OUT:materials code-dimensions code.  
Example:O100C-5 designates a plate nut according to O100 drawing, in steel, cadmium plated, with M5 thread.

Specifiche di riferimento  
Reference spec.  
**LN29673**  
**LN29692**

**OLIVETTA AUTOFRENANTE**  
**1 ALETTA,**  
**PLATE NUT SELF-LOCKING,**  
**1 LUG,**

**O100**  
**O101**