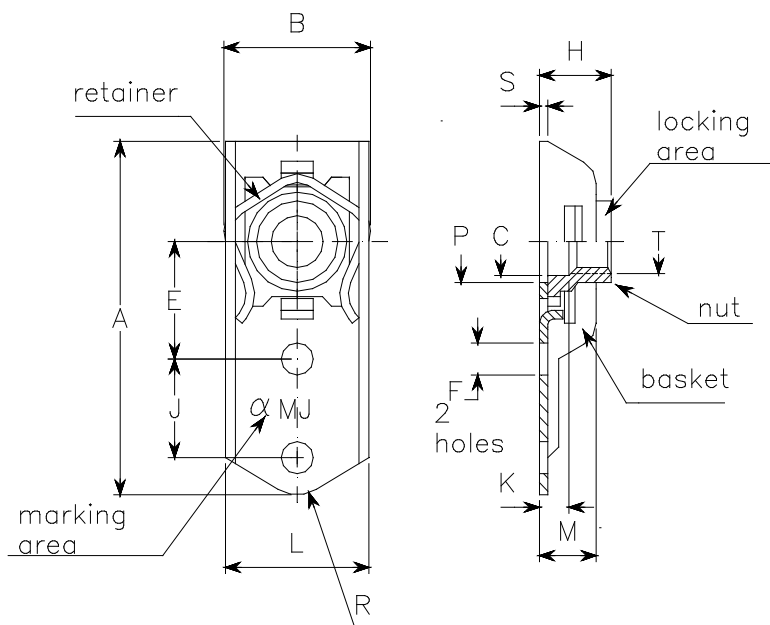




PAOLO ASTORI s.r.l.
via Mirabella 9-MAGGIATE SUP.
I 28013-GATTICO (NO)

FR631



Dimensions in mm

assembly code	thread T	toll.	A max.	B max.	C min.	E ±0,1	F 0 +0,2	J ±0,05	H max.	K min.	L max.	M max.	P min.	S ±0,1	mass kg x 1000 pcs
FR631-05	MJ5 x 0,8	4H-6H	27,5	11,7	5,5	9,5	2,5	8,00	6,9	2,4	11,5	4,5	6,5	0,8	3,4
FR631-06	MJ6 x 1	4H-5H	30,0	14,6	6,5	11,0	2,5	8,00	8,1	2,7	14,1	4,6	7,5	0,8	4,9
FR631-08	MJ8 x 1	4H-5H	32,7	18,0	8,5	11,0	3,0	8,50	9,9	2,7	16,5	5,5	9,5	0,9	7,8
FR631-10	MJ10x1,25	4H-5H	36,7	20,5	10,5	13,0	3,5	8,50	12,0	3,0	19,0	8,0	11,5	1,0	10,5

component	component codes	material	finish	hardness HR _C	strenght class	temperature class
nut	FR631N-05 FR631N-06 FR631N-08 FR631N-10	W1.4944.4	passivation+solid film lubricant iaw MIL-L-46010	28-36	1100 MPa	315°C
basket	FR631B-05 FR631B-06 FR631B-08 FR631B-10	W1.4944.4	passivation			
retainer	FR631R-05 FR631R-06 FR631R-08 FR631R-10	NAS1795-3 NAS1795-4 NAS1795-5 CRES 302 or A286, passivated				

FLOATING: horizontal mm 0,75 min. radially from centre, vertical mm 0,4 max.
 THREAD: iaw ISO5855 before locking deformation
 MARKING: Manufacturer symbol and letters MJ
 PROCUREMENT SPEC. ISO5858

ref.:	ANCHOR NUT, S/L, FLOATING, ONE LUG, REPLACEABLE NUT ELEMENT, CRES, 1100MPa/315°C	FR631
-------	---	--------------