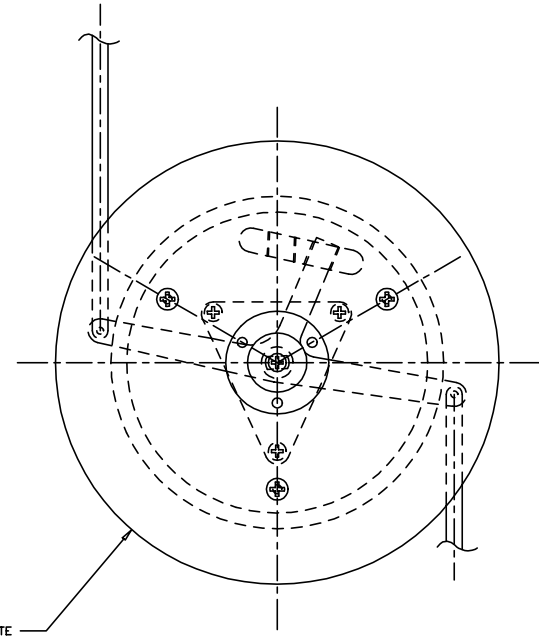
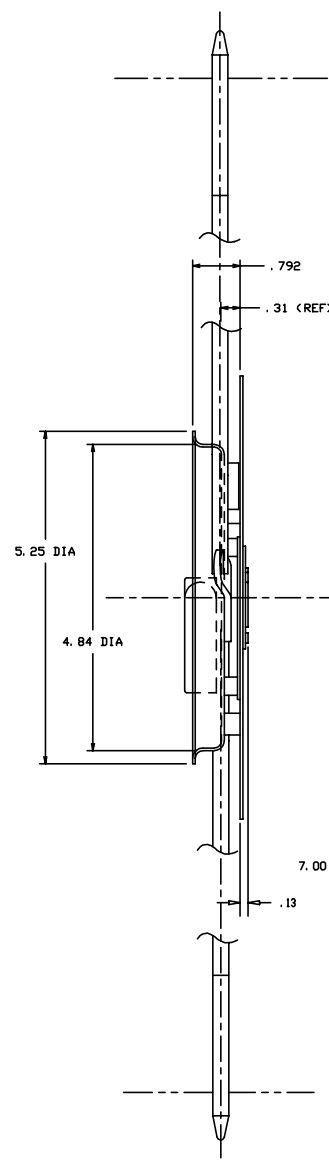
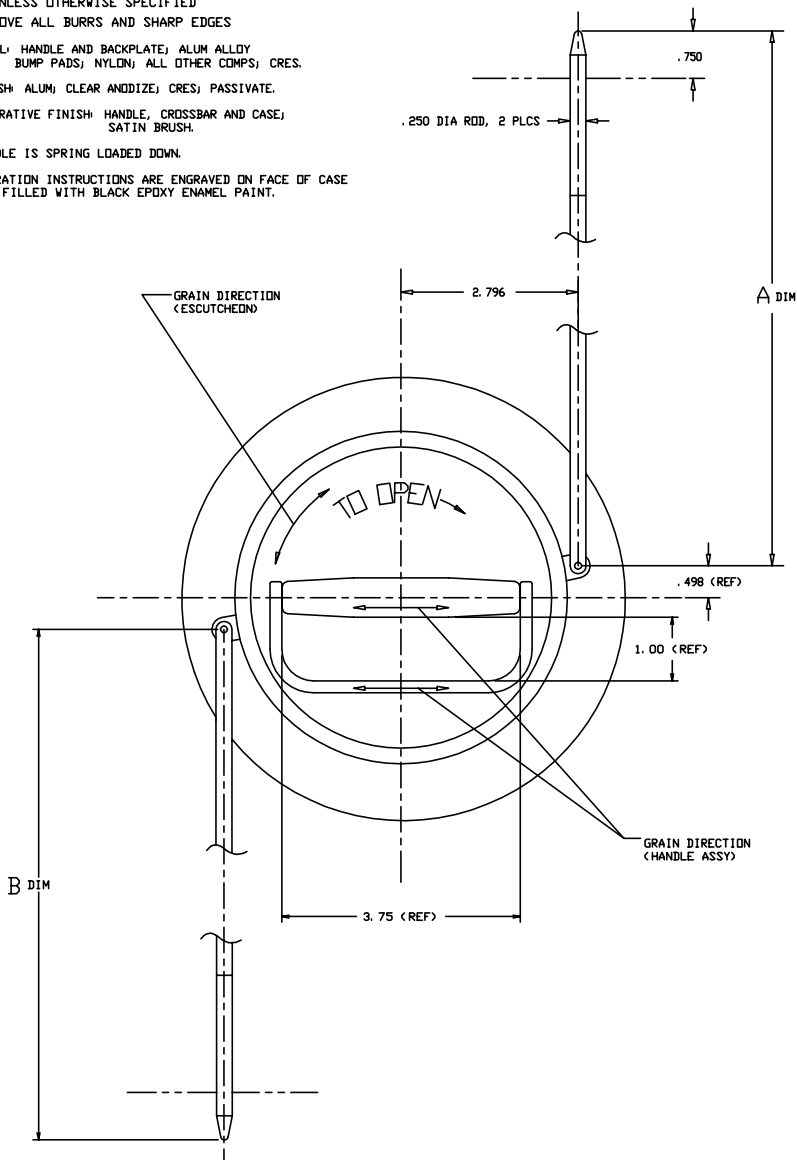


THE INFORMATION AND DESIGN HEREIN WAS ORIGINATED BY AND IS THE PROPERTY OF SKYLOCK INDUSTRIES INCORPORATED. SKYLOCK INDUSTRIES INCORPORATED RESERVES ALL PATENT, PROPRIETARY, DESIGN MANUFACTURING, REPRODUCTION, USE AND SALES RIGHTS THEREIN, AND TO ANY ARTICLE INCLUDING THEREIN EXCEPT TO THE EXTENT RIGHTS ARE EXPRESSLY GRANTED TO OTHERS. THE FOREGOING DOES NOT APPLY TO NON-PATENT PROPRIETARY PARTS.

- NOTES: UNLESS OTHERWISE SPECIFIED
1. REMOVE ALL BURRS AND SHARP EDGES
 2. MAT'L: HANDLE AND BACKPLATE; ALUM ALLOY
BUMP PADS; NYLON; ALL OTHER COMPS; CRES.
 3. FINISH: ALUM (CLEAR ANODIZE) CRES; PASSIVATE.
 4. DECORATIVE FINISH: HANDLE, CROSSBAR AND CASE;
SATIN BRUSH.
 5. HANDLE IS SPRING LOADED DOWN.
 6. OPERATION INSTRUCTIONS ARE ENGRAVED ON FACE OF CASE
AND FILLED WITH BLACK EPDXY ENAMEL PAINT.



REVISIONS:				
ZONE	LTA	DESCRIPTION	DATE	APPROVED
NC		PRODUCTION RELEASE	4.27.92	SC
A		ADDED -402, -404, -406	4-15-93	T. C.

REV #	DATE	BY	DESCRIPTION	MATERIAL / SPECIFICATION	ITEM #
10.18	10.18		-406	BOLTING SYSTEM	<OPP.>
10.18	10.18		-405	BOLTING SYSTEM	<SHOWN>
10.31	10.31		-404	BOLTING SYSTEM	<OPP.>
10.31	10.31		-403	BOLTING SYSTEM	<SHOWN>
34.38	7.38		-402	BOLTING SYSTEM	<OPP.>
34.38	7.38		-401	BOLTING SYSTEM	<SHOWN>

B DIM	A DIM	CONTRACT NO.	SKYLOCK INDUSTRIES INCORPORATED MONROVIA, CALIFORNIA, USA
UNLESS OTHERWISE SPECIFIED DIMENSIONS ARE IN INCHES		DRAWN BY S. CSIK	DATE
TOLERANCES	ANGULAR	CHECK	
DECIMALS 1/16 - .005	90°	DO NOT SCALE DRAWING	
1/32 - .010		DESIGN	
NEXT REV#	FINAL ASSY	DESIGN ACTIVITY	
USED ON		SCALE	1/1
FINISH	ACT VT	CALC VT	CUSTOMER

SIZE	FIG# NO.	DRAWING NO.	REV.
D	51941	20763	A
SCALE	RELEASE DATE	SHEET	1 OF 1
1/1	4.27.92		