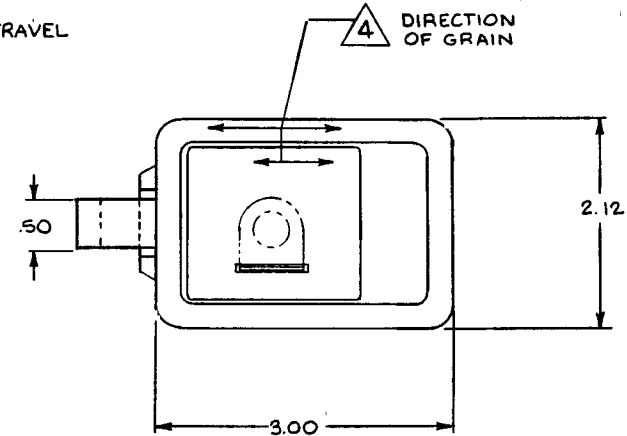
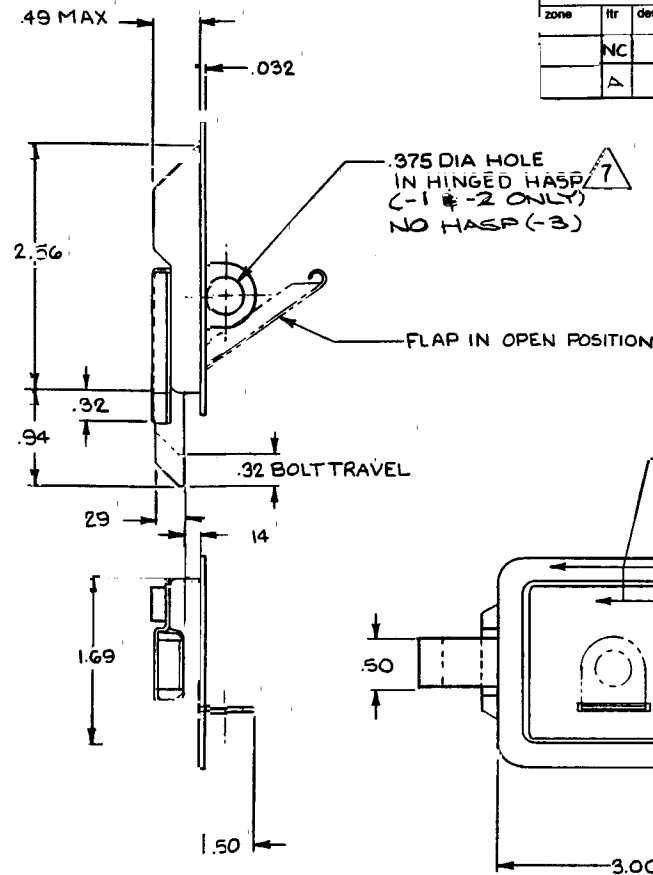
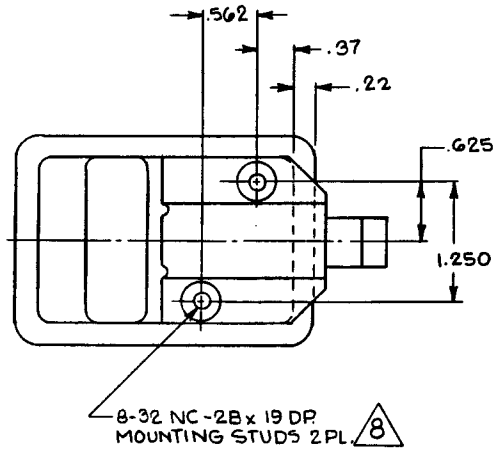


The information and design herein was originated by and is the property of Skylock Industries Incorporated. Skylock Industries Incorporated reserves all patent, proprietary, design, manufacturing, reproduction, use and sales rights thereto, and to any article disclosed therein except to the extent rights are expressly granted to others. The foregoing does not apply to vendor proprietary parts.

revisions				
zone	itr	description	date	approved
	NC	PRODUCTION RELEASE	11-27-87	T.S.
	A	ADDED -3	7-29-92	SL



8 HOLE PATTERN IS SAME FOR ODD & EVEN DASH NUMBERS

7 HASP MAY BE STOWED UNDER FLAP WHEN NOT IN USE

6 TO RETRACT BOLT, LIFT FLAP APPROXIMATELY 54° BOLT IS SPRING LOADED TO RETURN TO EXTEND POSITION

5 STATIC LOAD : 800 LBS

4 DECORATIVE FINISH: SATIN BRUSH

3 PROTECTIVE FINISH: PASSIVATE


2 MATL: CORROSION RESISTANT STEEL

1 REMOVE ALL BURRS AND SHARP CORNERS.

NOTES: UNLESS OTHERWISE SPECIFIED.

qty reqd	part no	description	material	size	specification	item no
	-3	LATCH ASSY	S/A -1 EXCEPT AS NOTED			
	-2	LATCH ASSY	OPP.			
	-1	LATCH ASSY	SHOWN			

parts list

unless otherwise specified	drawn by <i>ingdavis T</i> 7/27/87	 Skylock Industries Incorporated Monrovia California
dimensions are in inches	checked	
tolerances on decimals angles drilled holes .x ± .1 ± 0° 30' AND 10387 .xx ± .03 .xxx ± .010	engineer	
	project	
	approved <i>Russell</i> 7/27/87	
	approval	

LATCH ASSY

used on	next assy	final assy
application		qty reqd
unless otherwise specified		
interpret drawing in accordance with MIL-D-1000		
remove all burrs break sharp edges .010 max		
all corner and fillet radii to be .020 max		

material - finish	size	code ident no	drawing no	rev
	C	51941	20611	A
scale 1/1	wt	sheet	C 1	