

THE INFORMATION AND DESIGN HEREIN WAS ORIGINATED BY AND IS THE PROPERTY OF SKYLOCK INDUSTRIES INCORPORATED. SKYLOCK INDUSTRIES INCORPORATED RESERVES ALL PATENT, PROPRIETARY, DESIGN MANUFACTURING, REPRODUCTION, USE AND SALES RIGHTS THEREIN, AND TO ANY ARTICLE DISCLOSED THEREIN EXCEPT TO THE EXTENT RIGHTS ARE EXPRESSLY GRANTED TO OTHERS. THE FOREGOING DOES NOT APPLY TO VENDOR PROPRIETARY PARTS.

D	NOTE 6 WAS 800 LBS. MAX. IS 680 LBS. MAX.	4-30-93	T. CSIK	REVISIONS				
E	REVISED SCREW TAB. P/N'S TO AGREE WITH 'B' DIM'S	6-22-94	T. CSIK	ZONE	LTR	DESCRIPTION	DATE	APPROVED
F	ADDED -101/-102	8-29-94	T. CSIK		NC	PRODUCTION RELEASE	9-17-91	T. CSIK
G	SEE ECN G	12/31/98	T. CSIK		A	REVISED AND REDRAWN	8-10-92	T. CSIK
					B	ADDED -99	11-6-92	T. CSIK
					C	SHT. 3, POINT OF STATIC IS .94 FROM CENTERLINE WAS .25 FROM EDGE OF RETAINER	12-10-92	T. CSIK

SCREW TAB.	
A	NAS623-3-11W
B	NAS623-3-26W
C	NAS623-3-24W
D	NAS623-3-17W
E	NAS623-3-14W
F	NAS623-3-8W

(L/M CONT'D ON SHT. 2)

	-45	RETAINER	$\frac{5}{4} \frac{11}{9}$	180°	1.19	.94	A
	-43	RETAINER	$\frac{4}{4} \frac{9}{9}$	90°	1.19	.94	A
	-41	RETAINER	$\frac{5}{4} \frac{9}{9}$	90°	1.75	.94	A
	-39	RETAINER	$\frac{4}{4} \frac{9}{9}$	90°	1.19	1.33	D
	-37	RETAINER	$\frac{4}{4} \frac{11}{11}$	180°	2.33	.94	A
	-36	RETAINER	$\frac{4}{4} \frac{9}{9}$	90°	2.33	.94	A
	-35	RETAINER	$\frac{4}{4} \frac{10}{10}$	90°	2.33	.94	A
	-34	RETAINER	$\frac{4}{4} \frac{9}{9}$	90°	1.56	.94	A
	-33	RETAINER	$\frac{4}{4} \frac{11}{11}$	180°	1.19	.94	A
	-32	RETAINER	$\frac{4}{4} \frac{10}{10}$	90°	1.19	.94	A
	-31	RETAINER	$\frac{4}{4} \frac{9}{9}$	90°	1.19	.94	A
	-30	RETAINER	$\frac{4}{4} \frac{10}{10}$	90°	1.75	.94	A
	-29	RETAINER	$\frac{4}{4} \frac{9}{9}$	90°	1.75	.94	A
	-28	RETAINER	$\frac{5}{5} \frac{10}{10}$	90°	1.19	.94	A
	-27	RETAINER	$\frac{5}{5} \frac{9}{9}$	90°	1.19	.94	A
	-25	RETAINER	$\frac{5}{5} \frac{8}{8}$	360°	1.19	1.75	C
	-23	RETAINER	$\frac{5}{5} \frac{8}{8}$	360°	2.33	.94	A
	-21	RETAINER	$\frac{5}{5} \frac{8}{8}$	360°	1.625	.94	A
	-19	RETAINER	$\frac{5}{5} \frac{8}{8}$	360°	1.19	1.88	B
	-17	RETAINER	$\frac{5}{5} \frac{10}{10}$	90°	1.56	.94	A
	-15	RETAINER	$\frac{5}{5} \frac{9}{9}$	90°	1.19	.94	A
	-13	RETAINER	$\frac{5}{5} \frac{8}{8}$	360°	1.19	.94	A
	-11	RETAINER	$\frac{4}{4} \frac{8}{8}$	360°	1.19	1.75	C
	-9	RETAINER	$\frac{4}{4} \frac{8}{8}$	360°	2.33	.94	A
	-7	RETAINER	$\frac{4}{4} \frac{8}{8}$	360°	1.625	.94	A
	-5	RETAINER	$\frac{4}{4} \frac{8}{8}$	360°	1.19	1.88	B
	-4	RETAINER	$\frac{4}{4} \frac{8}{8}$	90°	1.56	.94	A
	-3	RETAINER	$\frac{4}{4} \frac{8}{8}$	90°	1.56	.94	A
	-1	RETAINER	$\frac{4}{4} \frac{8}{8}$	360°	1.19	.94	A
					A DIM	B DIM	SCREW

16. PER FAR 45.15. PARTS WILL BE IDENTIFIED WITH:
1. FAA-PMA
  2. SKYLOCK IND. INC.
  3. PART NO.
  4. AIRCRAFT ELIGIBILITY.

- $\frac{15}{15}$  TO SPECIFY ADDITION OF NYLON PELLET ON BEARING SURFACE OF RETAINER ADD \*-P\* TO PART NO. EXAMPLE; 20728-29-P.
- $\frac{14}{14}$  ROTATION 180°, DETENTED AT 0° AND 180° ONLY.
13. DETENTED EVERY 90° OF ROTATION.
- $\frac{12}{12}$  SHIP WITHOUT SCREW.
- $\frac{11}{11}$  ROTATION 180°.
- $\frac{10}{10}$  ROTATION 90° R. H.
- $\frac{9}{9}$  ROTATION 90° L. H.
- $\frac{8}{8}$  ROTATION 360°.
7. REMOVED
- $\frac{6}{6}$  REMOVED

- $\frac{5}{5}$  FINISH: BRIGHT POLISH AND ANODIZE PER MIL-A-8625, TYPE II, CLASS 2, CANDY APPLE RED.
- $\frac{4}{4}$  FINISH: SATIN BRUSH LENGTHWISE TO PART SURFACE AND CLEAR ANODIZE PER MIL-A-8625, TYPE II, CLASS I
3. FINISH: CRES PARTS; PASSIVATE PER AMS-QQ-P-35, TYPE II. SCREW; CADMIUM PLATE PER QQ-P-416, CLASS 2, TYPE II.
2. MAT'L: TURN; ALUM ALLOY, 2024-T4 PER ASTM B-221(OR EQUIV.) CAM; 303 CRES. COND. A PER AMS-5640N OR EQUIV. ALL OTHER PARTS; 300 SERIES CRES.
1. REMOVE ALL BURRS AND BREAK SHARP EDGES.
- NOTES: UNLESS OTHERWISE SPECIFIED.

QTY REQD	PART NO.	DESCRIPTION	MATERIAL	SIZE	SPECIFICATION	ITEM NO.
PARTS LIST						
UNLESS OTHERWISE SPECIFIED		DRAWN BY	T. CSIK	9-17-91		
DIMENSIONS ARE IN INCHES		CHECKED	DEAN VO	12/30/98		
TOLERANCES ON		ENGINEER	T. CSIK	12/31/98		
DECIMALS .1		MFG	P. MATSUOKA	1/11/99		
ANGLES 0° 30'		D.C.	J. VIVIRITO	1/12/99		
DRILLED HOLES .003						
AND 10387 .010						
DO NOT SCALE THIS DRAWING						
MATERIAL - FINISH		USED ON		SIZE	CODE IDENT. NO.	DRAWING NO.
				C	51941	20728
MANUFACTURED IN ACCORDANCE WITH SKYLOCK QUALITY CONTROL MANUAL QC.001				SCALE	NONE	SHEET 1 OF 3



20728 RETAINER

4

3

2

1

THE INFORMATION AND DESIGN HEREIN WAS ORIGINATED BY AND IS THE PROPERTY OF SKYLOCK INDUSTRIES INCORPORATED. SKYLOCK INDUSTRIES INCORPORATED RESERVES ALL PATENT, PROPRIETARY, DESIGN MANUFACTURING, REPRODUCTION, USE AND SALES RIGHTS THERE TO, AND TO ANY ARTICLE DISCLOSED THEREIN EXCEPT TO THE EXTENT RIGHTS ARE EXPRESSLY GRANTED TO OTHERS. THE FOREGOING DOES NOT APPLY TO VENDOR PROPRIETARY PARTS.

REVISIONS					
ZONE	LTR	DESCRIPTION	SEE SHT. 1 FOR NOTES	DATE	APPROVED

	-97	RETAINER		90°	.88	.94	A	
	-95	RETAINER		90°	.88	.94	A	
	-93	RETAINER		90°	2.00	.94	A	
	-92	RETAINER		90°	2.00	.94	A	
	-91	RETAINER		90°	5.80	.94	A	
	-90	RETAINER		90°	.775	-	-	
	-89	RETAINER		90°	.775	-	-	
	-88	RETAINER		90°	1.19	-	-	
	-87	RETAINER		90°	1.19	-	-	
	-85	RETAINER		90°	3.00	.94	A	
	-83	RETAINER		90°	3.00	.94	A	
	-81	RETAINER		180°	2.33	.94	A	
	-79	RETAINER		90°	2.25	.94	A	
	-77	RETAINER		90°	2.25	.94	A	
	-75	RETAINER		90°	2.25	.94	A	
	-73	RETAINER		90°	2.25	.94	A	
	-71	RETAINER		180°	2.00	.94	A	
	-69	RETAINER		90°	4.88	.94	A	
	-67	RETAINER		90°	4.00	1.12	E	
	-65	RETAINER		180°	1.50	1.12	E	
	-63	RETAINER		90°	4.00	1.12	E	
	-61	RETAINER		180°	2.00	1.12	E	
	-59	RETAINER		90°	1.19	-	-	
	-58	RETAINER		90°	1.19	-	-	
	-57	RETAINER		90°	1.19	-	-	
	-56	RETAINER		90°	3.00	.94	A	
	-55	RETAINER		90°	3.00	.94	A	
	-54	RETAINER		90°	1.65	.94	A	
	-53	RETAINER		90°	1.99	1.12	E	
	-52	RETAINER		360°	1.44	.94	A	
	-51	RETAINER		180°	1.62	1.88	B	
	-50	RETAINER						
	-49	RETAINER		180°	1.62	.94	A	
	-47	RETAINER		180°	1.19	1.75	C	
					A DIM	B DIM	SCREW	

QTY REQD	PART NO.	DESCRIPTION	MATERIAL	SIZE	SPECIFICATION	ITEM NO.
----------	----------	-------------	----------	------	---------------	----------

PARTS LIST



20728 RETAINER

SIZE	CODE IDENT. NO.	DRAWING NO.	REV.
C	51941	20728	G
SCALE	NONE	WT.	SHEET 2 OF 3

	-102	RETAINER		90°	1.19	.84	F	
	-101	RETAINER		90°	1.19	.84	F	
	-99	RETAINER		180°	1.19	.94	A	
					A DIM	B DIM	SCREW	
QTY REQD	PART NO.	DESCRIPTION	MATERIAL SIZE SPECIFICATION			ITEM NO.		

4

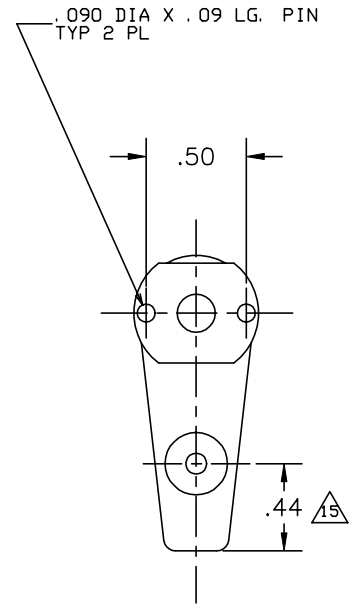
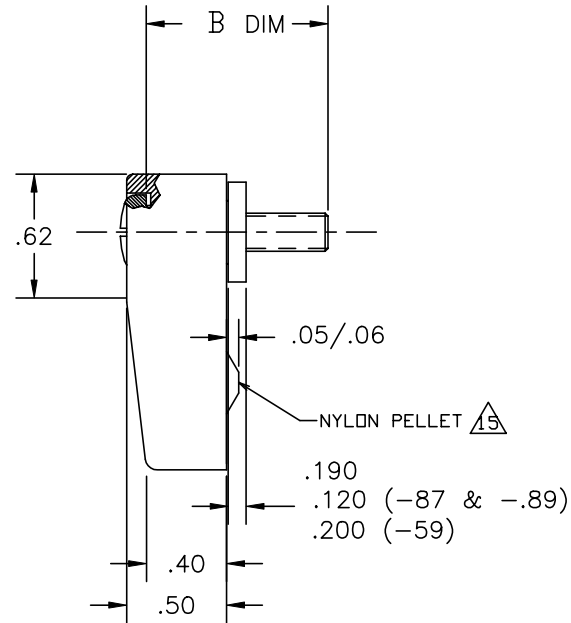
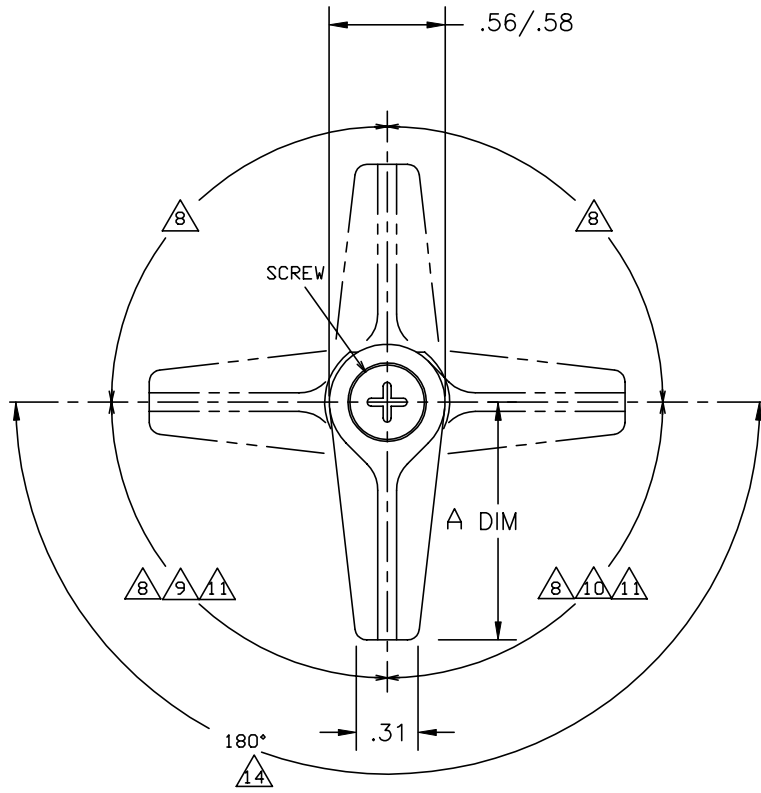
3

2

1

THE INFORMATION AND DESIGN HEREIN WAS ORIGINATED BY AND IS THE PROPERTY OF SKYLOCK INDUSTRIES INCORPORATED. SKYLOCK INDUSTRIES INCORPORATED RESERVES ALL PATENT, PROPRIETARY, DESIGN MANUFACTURING, REPRODUCTION, USE AND SALES RIGHTS THERE TO, AND TO ANY ARTICLE DISCLOSED THEREIN EXCEPT TO THE EXTENT RIGHTS ARE EXPRESSLY GRANTED TO OTHERS. THE FOREGOING DOES NOT APPLY TO VENDOR PROPRIETARY PARTS.

REVISIONS				
ZONE	LTR	DESCRIPTION	DATE	APPROVED
		SEE SHT. 1 FOR NOTES		



SKYLOCK INDUSTRIES INCORPORATED  
MONROVIA CALIFORNIA U. S. A.

20728 RETAINER

SIZE	CODE IDENT. NO.	DRAWING NO.	REV.
C	51941	20728	G
SCALE	2: 1	VT.	SHEET 3 OF 3