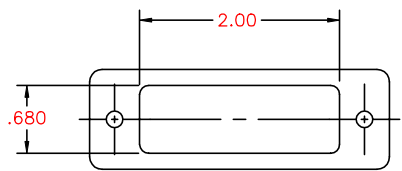
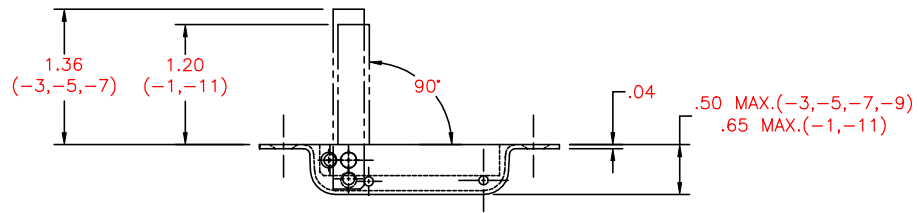
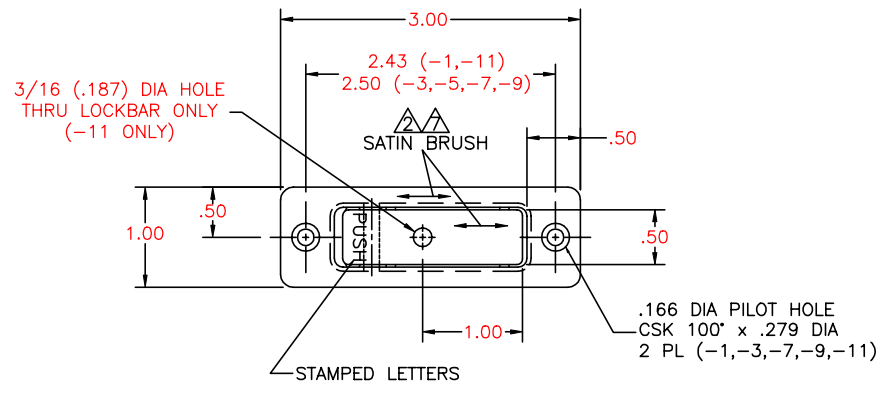
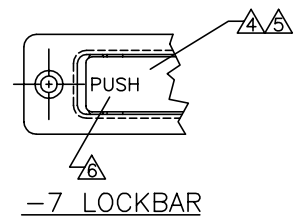


THE INFORMATION AND DESIGN HEREIN WAS ORIGINATED BY AND IS THE PROPERTY OF SKYLOCK INDUSTRIES INCORPORATED. SKYLOCK INDUSTRIES INCORPORATED RESERVES ALL PATENT, PROPRIETARY, DESIGN MANUFACTURING, REPRODUCTION, USE AND SALES RIGHTS THERE TO, AND TO ANY ARTICLE DISCLOSED THEREIN EXCEPT TO THE EXTENT RIGHTS ARE EXPRESSLY GRANTED TO OTHERS. THE FOREGOING DOES NOT APPLY TO VENDOR PROPRIETARY PARTS.

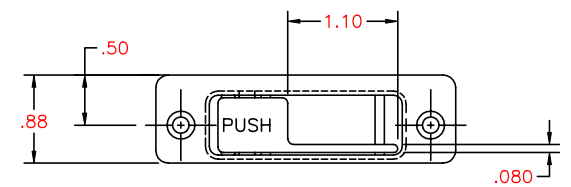
REVISIONS				
ZONE	LTR	DESCRIPTION	DATE	APPROVED
	G	SEE ECN G	10/14/99	T.CSIK



-1 THRU -11 LOCKBAR (SHOWN)



-7 LOCKBAR



-9 LOCKBAR
(S/A -7 EXCEPT AS SHOWN)

8. APPLICABLE TO FAA-PMA REPLACEMENT OR MODIFICATION PARTS ONLY. PER FAR 45.15, PARTS WILL BE IDENTIFIED WITH:
1. FAA-PMA.
 2. SKYLOCK IND. INC.
 3. PART NO.
 4. AIRCRAFT INSTALLATION ELIGIBILITY.

- △ FINISH REF.: SATIN BRUSH DIRECTION NOTED AND CLEAR ANODIZE PER MIL-A-8625, TYPE II, CLASS 1, OR EQUIV.
 - △ LETTERS, ENGRAVED, .030 DP & FILLED WITH WHITE ENAMEL PAINT
 - △ MAT'L REF.: LOCKBAR; 6061-T6/T651 PER ASTM-B-221, OR EQUIV.
 - △ FINISH REF.: BRIGHT POLISH & ANODIZE PER MIL-A-8625, TYPE II, CLASS 1, DYED CANDY APPLE RED.
 - △ LOCKBAR DETENTED IN CLOSED & OPEN POSITION
 - △ FINISH REF.: SATIN BRUSH DIRECTION NOTED AND PASSIVATE PER AMS-QQ-P-35.
 - △ MAT'L REF.: CASE; 304 CRES, CONDA, PER AMS-5639E OR EQUIV. 303 CRES, CONDA, PER AMS-5640N OR EQUIV.
- REMOVE ALL BURRS AND SHARP CORNERS.
NOTES: UNLESS OTHERWISE SPECIFIED:

QTY. REQD.	PART NO.	DESCRIPTION	MATERIAL	SIZE	APPLICATION	MAKE FROM
	-11	LOCKBAR	1 2 3	(S/A -1 EXCEPT AS NOTED)		120217-211
	-9	LOCKBAR	3 5 6 7			120217-209
	-7	LOCKBAR	1 2 3 4 5 6			120217-207
	-5	LOCKBAR	1 2 3	(S/A -3 EXCEPT MOUNTING HOLES OMITTED)		120217-205
	-3	LOCKBAR	1 2 3			120217-203
	-1	LOCKBAR	1 2 3			120217-201

PARTS LIST

UNLESS OTHERWISE SPECIFIED	DRAWN BY	ED WELSH	9/21/99	SKYLOCK INDUSTRIES INCORPORATED MONROVIA CALIFORNIA U. S. A.
DIMENSIONS ARE IN INCHES	CHECKED	L.GARCIA	9/23/99	
TOLERANCES ON	ENGINEER	T.CSIK	10/14/99	
DECIMALS ANGLES DRILLED HOLES	MFG	P.MATSUOKA	10/14/99	
.X .1	Q. A.	J.VIVIRITO	10/20/99	
.XX .03				
.XXX .010				

DO NOT SCALE THIS DRAWING

MATERIAL - FINISH	USED ON	SIZE	CODE IDENT. NO.	DRAWING NO.	REV.
		C	51941	20217	G

MANUFACTURE IN ACCORDANCE WITH SKYLOCK IND. INC., QUALITY CONTROL MANUAL QC 001

SCALE 2:1 WT. SHEET 1 OF 1

20217 LOCKBAR