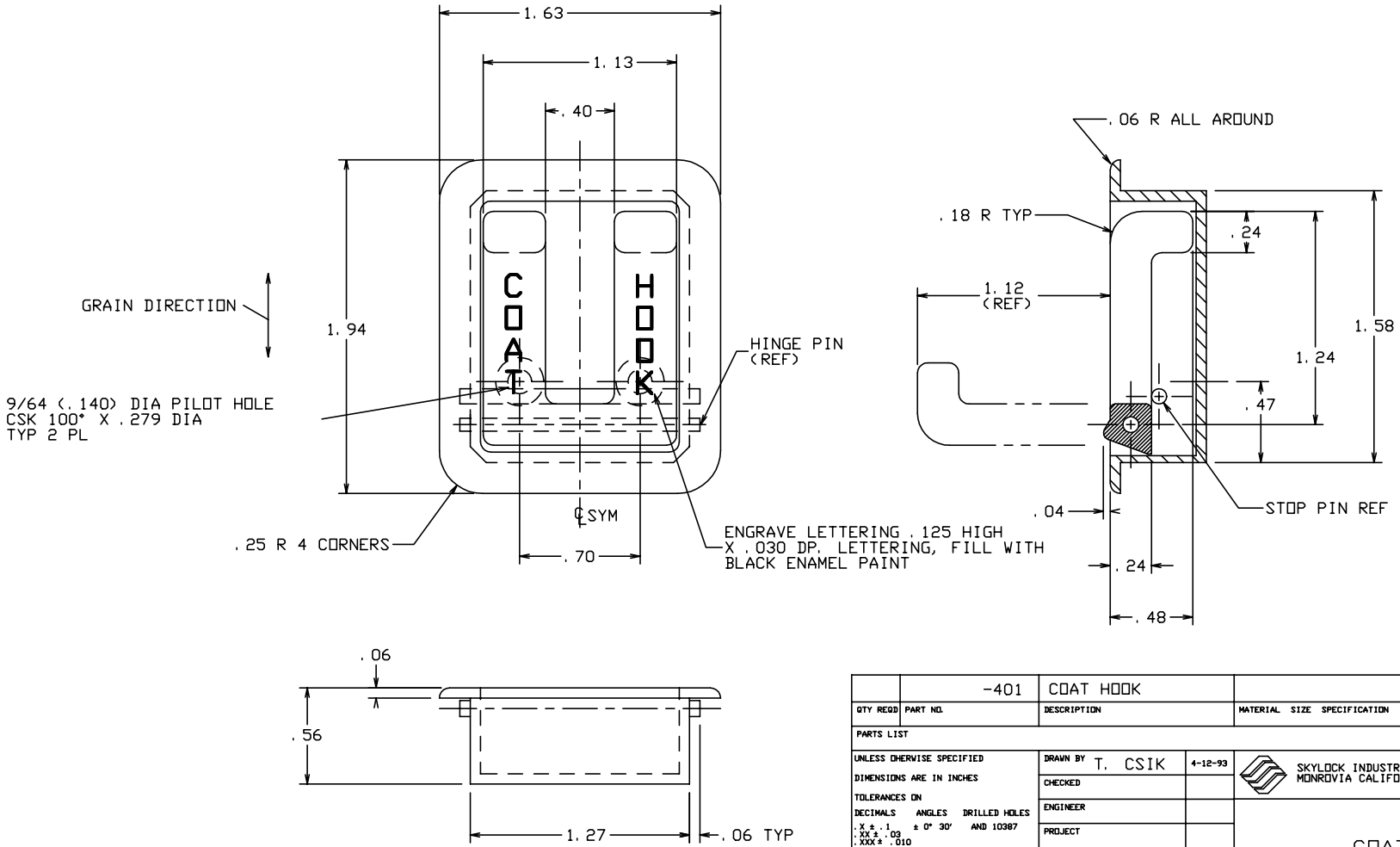



THE INFORMATION AND DESIGN HEREIN WAS ORIGINATED BY AND IS THE PROPERTY OF SKYLOCK INDUSTRIES INCORPORATED. SKYLOCK INDUSTRIES INCORPORATED RESERVES ALL PATENT, PROPRIETARY, DESIGN MANUFACTURING, REPRODUCTION, USE AND SALES RIGHTS THERE TO, AND TO ANY ARTICLE DISCLOSED THEREIN EXCEPT TO THE EXTENT RIGHTS ARE EXPRESSLY GRANTED TO OTHERS. THE FOREGOING DOES NOT APPLY TO VENDOR PROPRIETARY PARTS.

REVISIONS				
ZONE	LTR	DESCRIPTION	DATE	APPROVED
	D	REVISED AND REDRAWN	7-21-93	T. CSIK

- NOTES: UNLESS OTHERWISE SPECIFIED.
1. REMOVE ALL BURRS AND BREAK SHARP EDGES.
  2. MAT'L: 6061-T6 ALUM. ALLOY, BUMPERS; DELRIN, PIN AND SPRING CLIP; ST. STL.
  3. FINISH: ALUM. COMP'S; CLEAR ANODIZE, ST. STL. COMP'S; PASSIVATE.
  4. DECORATIVE FINISH: SATIN BRUSH.
  5. COAT HOOK IS SPRING LOADED TO THE RETRACTED POSITION.



	-401	COAT HOOK		
QTY REQD	PART NO.	DESCRIPTION	MATERIAL	SIZE SPECIFICATION
				ITEM NO.
PARTS LIST				
UNLESS OTHERWISE SPECIFIED		DRAWN BY T. CSIK	4-12-93	 SKYLOCK INDUSTRIES INCORPORATED MONROVIA CALIFORNIA U. S. A.
DIMENSIONS ARE IN INCHES		CHECKED		
TOLERANCES ON		ENGINEER		
DECIMALS ANGLES DRILLED HOLES		PROJECT		
.X ± .1 ± 0° 30' AND 10387		APPROVAL T. CSIK	4-12-93	COAT HOOK
.XX ± .03 .XXX ± .010		APPROVAL		
DO NOT SCALE THIS DRAWING				
MATERIAL - FINISH	USED ON	SIZE	CODE IDENT. NO.	DRAWING NO.
		C	51941	20821
NEXT ASSY		SCALE	1: 1	REV. D
FINAL ASSY		VT.		SHEET 1 OF 1