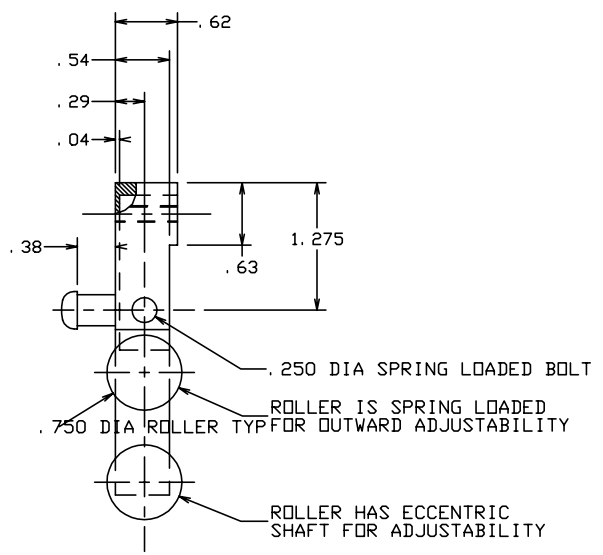
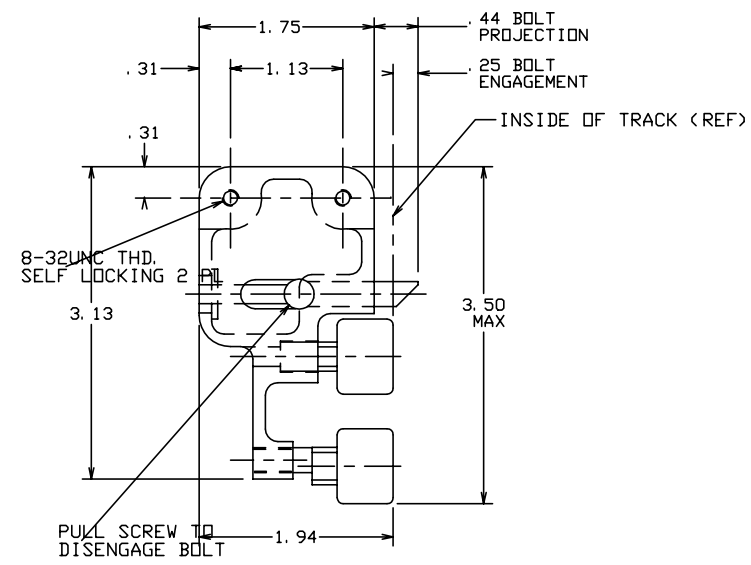



THE INFORMATION AND DESIGN HEREIN WAS ORIGINATED BY AND IS THE PROPERTY OF SKYLOCK INDUSTRIES INCORPORATED. SKYLOCK INDUSTRIES INCORPORATED RESERVES ALL PATENT, PROPRIETARY, DESIGN MANUFACTURING, REPRODUCTION, USE AND SALES RIGHTS THERE TO, AND TO ANY ARTICLE DISCLOSED THEREIN EXCEPT TO THE EXTENT RIGHTS ARE EXPRESSLY GRANTED TO OTHERS. THE FOREGOING DOES NOT APPLY TO VENDOR PROPRIETARY PARTS.

REVISIONS				
ZONE	LTR	DESCRIPTION	DATE	APPROVED
	NC	PRODUCTION RELEASE	4-5-91	T. C.
	A	REVISED AND REDRAWN	7-30-91	T. C.

- NOTES: UNLESS OTHERWISE SPECIFIED.
1. REMOVE ALL BURRS AND BREAK SHARP EDGES.
 2. MAT'L: CHASSIS; 6061-T6 ALUM ALLOY, ROLLERS; BLACK NYLON 6/6, ALL OTHER PARTS; CRES.
 3. FINISH: ALUM.; CLEAR ANODIZE, CRES.; CLEAN AND PASSIVATE.



	-402	ROLLER ASSY	< OPPOSITE >				
	-401	ROLLER ASSY	< SHOWN >				
QTY REQD	PART NO.	DESCRIPTION	MATERIAL	SIZE	SPECIFICATION	ITEM NO.	
PARTS LIST							
UNLESS OTHERWISE SPECIFIED		DRAWN BY	T. CSIK	4-3-91	 SKYLOCK INDUSTRIES INCORPORATED MONROVIA CALIFORNIA U. S. A.		
DIMENSIONS ARE IN INCHES		CHECKED					
TOLERANCES ON		ENGINEER					
DECIMALS ANGLES DRILLED HOLES		PROJECT					
.X ± .1 ± 0° 30' AND 10387		APPROVAL	T. CSIK	4-5-91	ROLLER ASSY		
.XX ± .03		APPROVAL					
.XXX ± .010		DO NOT SCALE THIS DRAWING					
MATERIAL - FINISH		USED ON		SIZE	CODE IDENT. NO.	DRAWING NO.	REV.
NEXT ASSY				C	51941	20703	A
FINAL ASSY				SCALE	1: 1	WT.	SHEET 1 OF 1