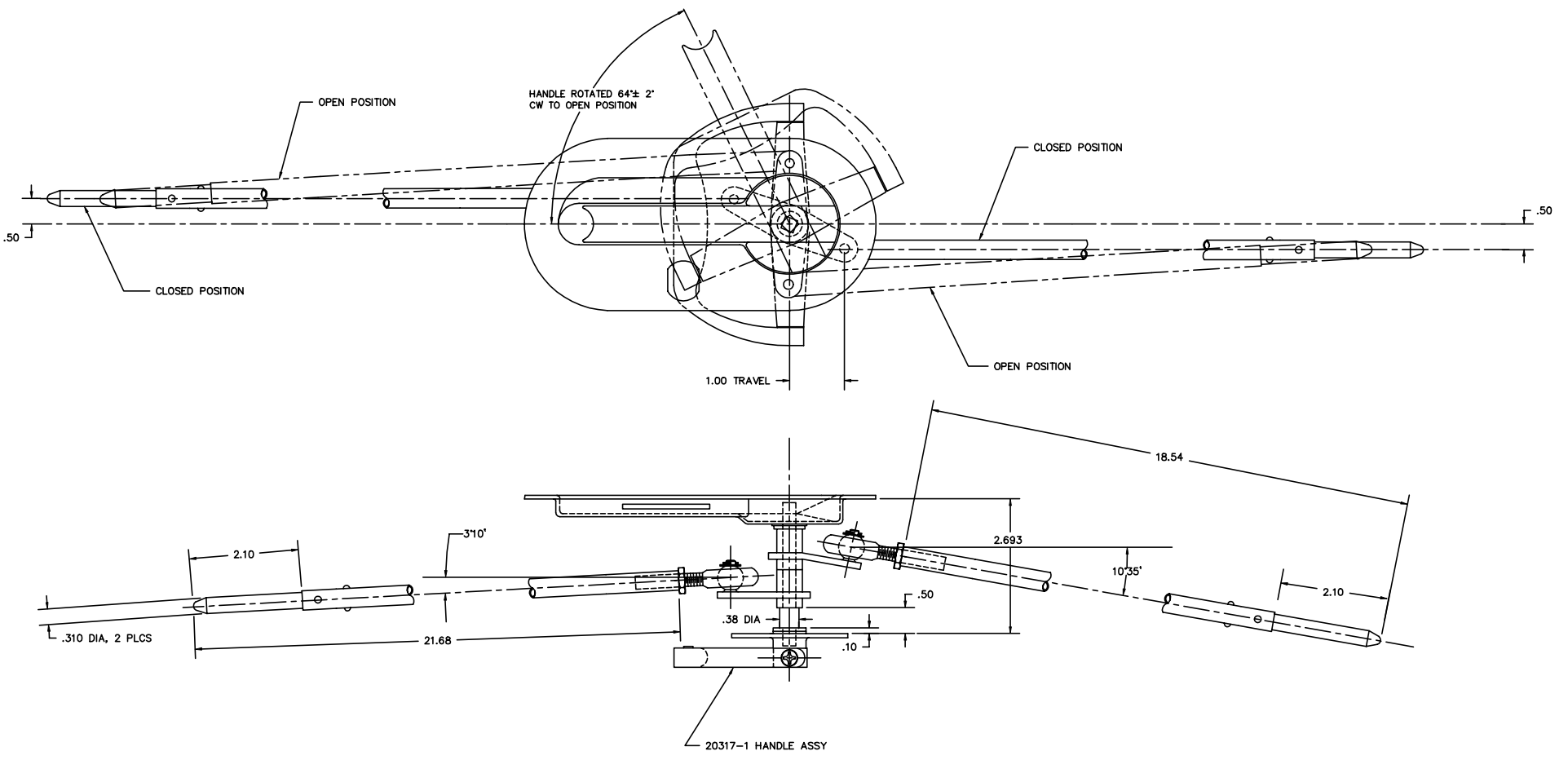


THIS INFORMATION AND DESIGN HEREIN ARE ORIGINATED BY AND IS THE PROPERTY OF SKYLOCK INDUSTRIES INCORPORATED. SKYLOCK INDUSTRIES INCORPORATED RESERVES ALL RIGHTS, INCLUDING DESIGN MANUFACTURING APPROVED, USE, AND SALES RIGHTS HEREIN, AND TO ANY PATENT OR PATENTS, TRADE MARKS OR TRADE NAMES ARE SPECIFICALLY RESERVED TO SKYLOCK. THE INFORMATION DOES NOT APPLY TO VENDOR PROPRIETARY PARTS.

REVISIONS				
ZONE	LR	DESCRIPTION	DATE	APPROVED
NC		PRODUCTION RELEASE	3/17/90	SC



- 7 DECORATIVE FINISH (20317-1 HANDLE ASSY): ON VISIBLE SURFACES, AS INSTALLED, TO BE SATIN BRUSH AND CLEAR ANODIZE PER MIL-A-8625
- 6 FINISH: POLYAMIDE EPOXY PRIMER PER MIL-P-23377 ONE COAT ONLY
- 4 HANDLES ARE SPRING LOADED DOWN.
- 3 KEYING: SPECIFIED ON ORDER (OPTIONAL)
- △ FINISH: ALUM PARTS: ANODIZE PER MIL-A-8625, TYPE 1; CRES PARTS: CLEAN AND PASSIVATE PER MIL-S-5002
- △ MAT'L: SUPPORTS AND TUBES: 2024-T4 ALUM ALLOY; BOLTS AND BELLCRANKS: 17-4 PH CRES; BUSHING: NYLON 6/6; HANDLE ASSY(20317-1): ALUM ALLOY; ALL OTHER PARTS: CRES
- 1. REMOVE ALL BURRS AND BREAK SHARP EDGES.
- NOTES: UNLESS OTHERWISE SPECIFIED.

QTY REQD		PART / IDENT NO.		DESCRIPTION		MATERIAL / SPECIFICATION		REV
		-401		LATCH ASSY				1
UNLESS OTHERWISE SPECIFIED: DIMENSIONS ARE IN INCHES TOLERANCES UNLESS JOB # 20 JOB # 210 DO NOT SCALE DRAWING				CONTRACT NO.		SKYLOCK INDUSTRIES INCORPORATED MONROVIA, CALIFORNIA, USA		
DRAWN BY S. CSIK				CHECK S. CSIK		LATCH ASSEMBLY, LITTER DOOR - SPECIAL		
NEXT ASST FINAL ASST				DESIGN ACTIVITY DLS		REV. NC		
USED ON				CUSTOMER		SCALE 1/1		
NOTED				ACT BY		RELEASE DATE 3/17/90 SHEET 1 OF 1		

PAGE 1 OF 1 (REV) NC 20675