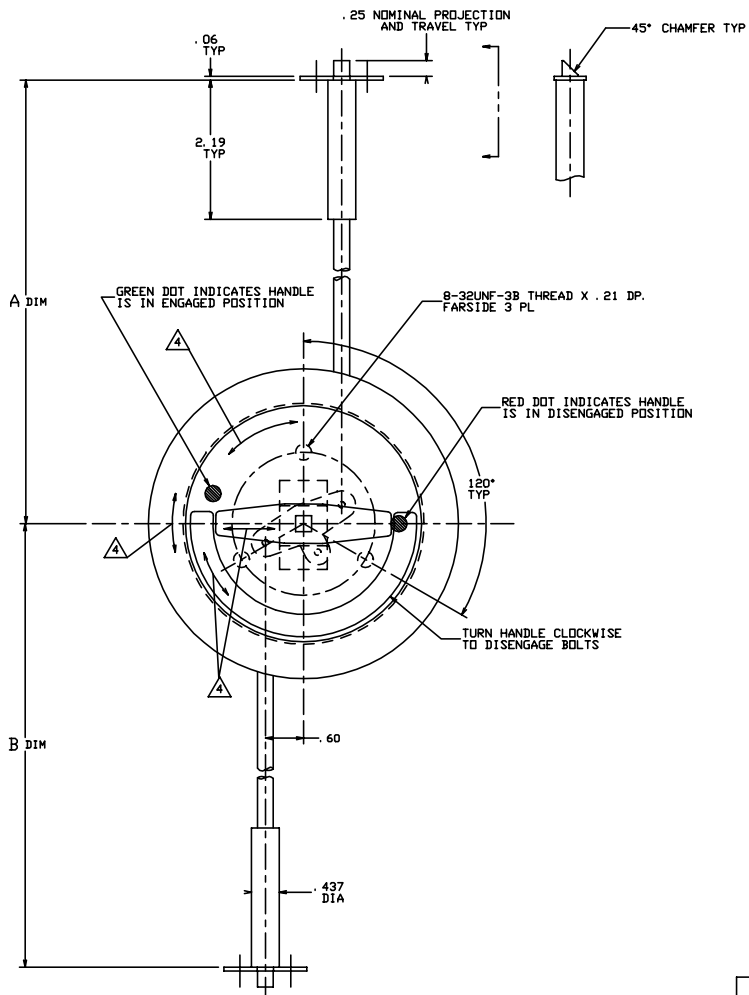
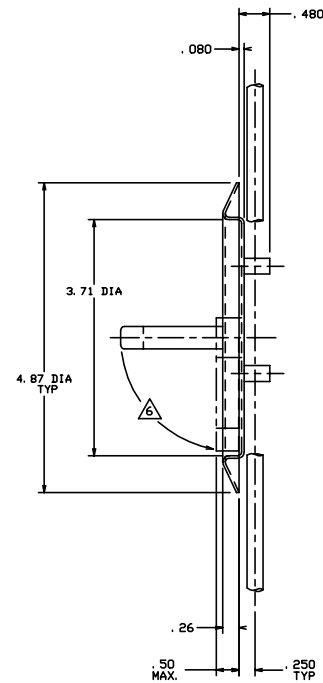


THE INFORMATION AND DESIGN HEREIN WAS DEVELOPED BY AND IS THE PROPERTY OF SOLVEX INDUSTRIES INCORPORATED. SOLVEX INDUSTRIES INCORPORATED RESERVES ALL PATENT, PROPRIETARY, DESIGN MANUFACTURING INFORMATION, USE AND SALES RIGHTS HEREIN, AND TO ANY ARTICLES DEVELOPED THEREIN EXCEPT TO THE EXTENT RIGHTS ARE EXPRESSLY GRANTED TO OTHERS. THE FOREGOING DOES NOT APPLY TO NON-PATENTABLE PARTS.

- NOTES: UNLESS OTHERWISE SPECIFIED.
1. REMOVE ALL BURRS AND BREAK SHARP EDGES.
 2. MAT'L: *D* HANDLE AND TEE BAR; 6061-T6 ALUM. ALLOY, ALL OTHER PARTS; 300 SERIES CRES.
 3. FINISH: ALUM.; CLEAR ANODIZE PER MIL-A-8625E. ST. STL.; CLEAN AND PASSIVATE.
 4. DECORATIVE FINISH: HANDLE AND CUP ARE SATIN BRUSHED ON TOP SURFACES.
 5. BOLTS ARE SPRING LOADED TO THE ENGAGED POSITION.
 6. *D* HANDLE TO BE SPRING LOADED DOWN.
 7. USE WITH 20177-3 BACKPLATE, ORDERED SEPARATELY.



REVISIONS				
ZONE	LTR	DESCRIPTION	DATE	APPROVED
NC		PRODUCTION RELEASE	10-20-93	T. C.

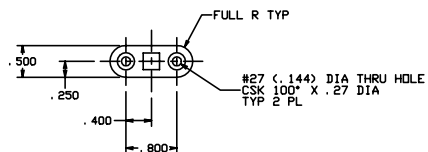


EXAMPLE:

20868-401-100-100

A DIM. @ 10.0 INCHES
B DIM. @ 10.0 INCHES

QTY REQD	PART NO.	DESCRIPTION	MATERIAL	SIZE	SPECIFICATION	TRK NO.
-402	FIRST TWO DIGITS (INCHES) THIRD DIGIT (TENTH IN.) A DIM.	FIRST TWO DIGITS (INCHES) THIRD DIGIT (TENTH IN.) B DIM.				
-401	FIRST TWO DIGITS (INCHES) THIRD DIGIT (TENTH IN.) A DIM.	FIRST TWO DIGITS (INCHES) THIRD DIGIT (TENTH IN.) B DIM.				
FIRST DASH NO.	SECOND DASH NO.	THIRD DASH NO.				
TABULATION BLOCK						



SEE TABULATION BLOCK FOR ORDERING INFORMATION

	-402	BOLTING SYSTEM	(DPP. -401)		
	-401	BOLTING SYSTEM	(SHOWN)		
QTY REQD	PART NO.	DESCRIPTION	MATERIAL	SIZE SPECIFICATION	TRK NO.
PARTS LIST					
UNLESS OTHERWISE SPECIFIED		DRAWN BY	T. CSIK	10-20-93	 SOLVEX INDUSTRIES INCORPORATED MORNINGVIEW, CALIFORNIA
DIMENSIONS ARE IN INCHES		CHECKED			
TOLERANCES ON		DESIGNED			DOOR BOLTING SYSTEM 2 POINT - SLAM
DECIMALS ANGLES DRILLED HOLES		PROJECT			
.0005 .001 .002 .005 .010 .015 .030 .050 .100 .150 .250 .500 1.000 2.000 3.000 4.000 5.000 10.000 15.000 20.000 30.000 40.000 50.000 100.000 150.000 200.000 300.000 400.000 500.000 1000.000 1500.000 2000.000 3000.000 4000.000 5000.000		APPROVAL	T. CSIK	10-20-93	
DO NOT SCALE THIS DRAWING		APPROVAL			
MATERIAL - FINISH		USED ON			SIZE
NEXT ASBY					D
FINAL ASBY					CODE IDENT. NO.
					51941
					DRAWING NO.
					20868
					REV.
					NC
					SCALE
					1:1
					VS.
					SHEET
					1 OF 1