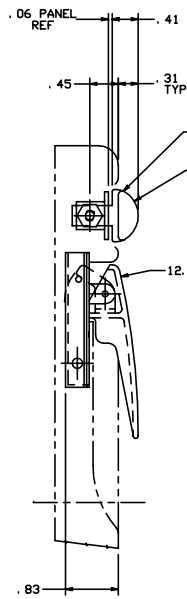
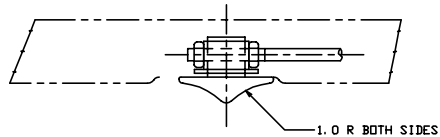


THE INFORMATION AND DESIGN HEREIN WAS DEVELOPED BY AND IS THE PROPERTY OF SULLY INDUSTRIES INCORPORATED. SULLY INDUSTRIES INCORPORATED RESERVES ALL PATENT, PROPRIETARY, DESIGN MANUFACTURING INFORMATION, USE AND SALES RIGHTS HEREIN, AND TO ANY ARTICLES DEVELOPED THEREIN EXCEPT TO THE EXTENT RIGHTS ARE EXPRESSLY GRANTED TO OTHERS. THE FOREGOING DOES NOT APPLY TO NON-PATENTABLE MATTER.

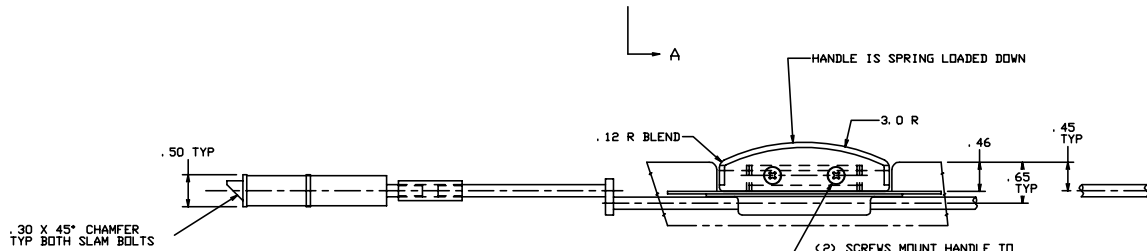
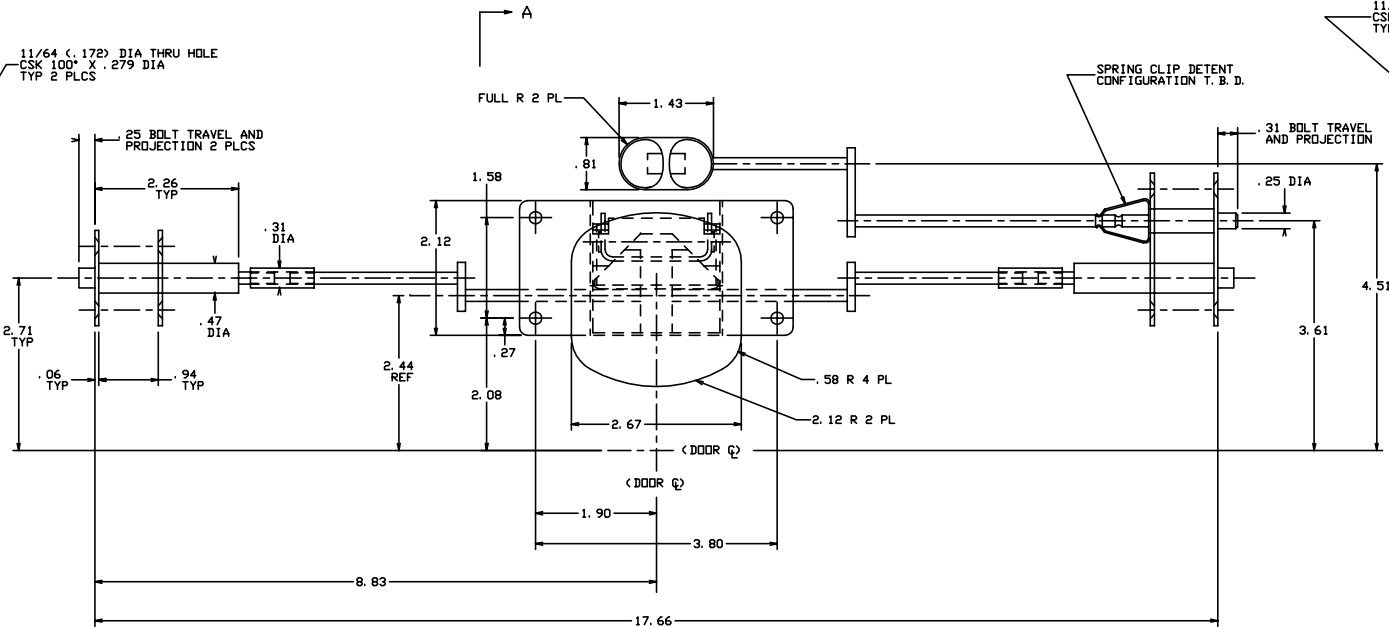
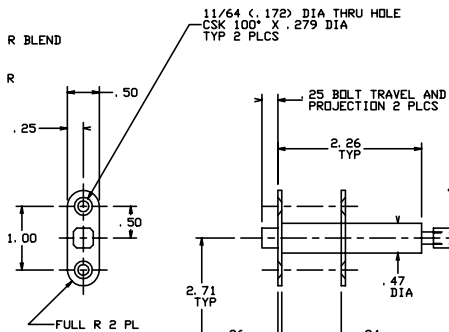
REVISIONS				
ZONE	LTR	DESCRIPTION	DATE	APPROVED
P1		PRELIMINARY ISSUE	8-18-93	T. CSIK

NOTES: UNLESS OTHERWISE SPECIFIED.

- MATERIAL: PRIMARY AND SECONDARY HANDLE - POLYCARBONATE, COLOR T. B. D.
SLIDERS - NYLON 6/6
ALL OTHER COMPONENTS - CRES.
- FINISH: CRES COMPONENTS - PASSIVATE.
- DECORATIVE FINISH: PRIMARY AND SECONDARY HANDLE - T. B. D.
- OPERATION: PRIMARY LATCH - LIFT HANDLE TO RETRACT (2) SLAM BOLTS.
SLAM BOLTS ARE SPRING LOADED TO THE ENGAGED POSITION.
SECONDARY LATCH - LIFT FINGER SLIDE TO RETRACT DEADBOLT.
DEADBOLT IS DETENTED IN EXTENDED AND RETRACTED POSITIONS.



VIEW A-A



-401 LATCH ASSY			
QTY REQD	PART NO.	DESCRIPTION	MATERIAL SIZE SPECIFICATION
PARTS LIST			
UNLESS OTHERWISE SPECIFIED		DRAWN BY T. CSIK 8-18-93	
DIMENSIONS ARE IN INCHES		CHECKED	
TOLERANCES UNLESS OTHERWISE SPECIFIED		DESIGNED	
RECTANGLES ANGLES MILLER HELIX		PROJECT	
1/8" ± .010 1/16" ± .005 AND 1/32"		APPROVAL T. CSIK 8-18-93	
DO NOT SCALE THIS DRAWING		APPROVAL	
MATERIAL - FINISH		USED ON	
NEXT ASSY		SCALE	
FINAL ASSY		SHEET 1 OF 1	

SULLY INDUSTRIES INCORPORATED
 REDWOOD CITY, CALIFORNIA U.S.A.
 LATCH ASSY - OVEN DOOR
 SIZE CODE INCH. NO. DRAWING NO. 51941 20851
 REV. P1