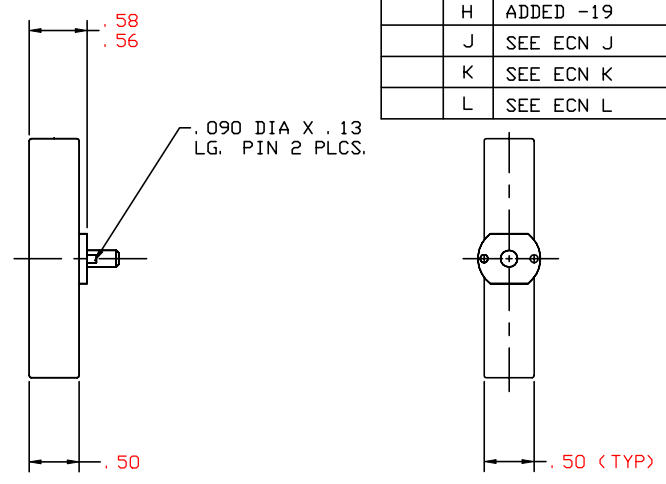
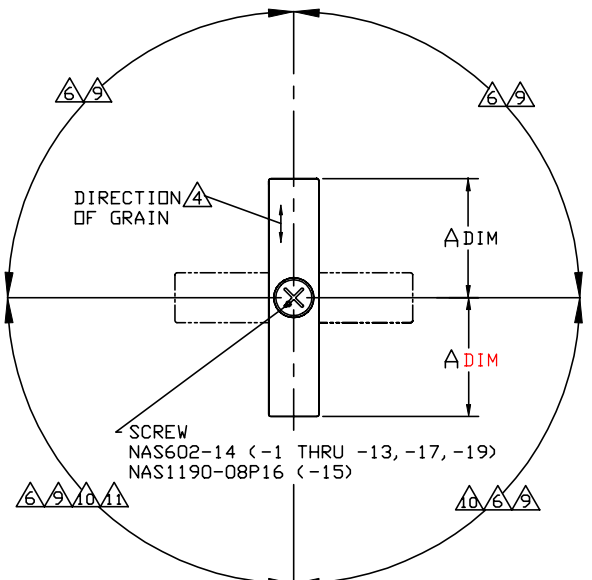


THE INFORMATION AND DESIGN HEREIN WAS ORIGINATED BY AND IS THE PROPERTY OF SKYLOCK INDUSTRIES INCORPORATED. SKYLOCK INDUSTRIES INCORPORATED RESERVES ALL PATENT, PROPRIETARY, DESIGN MANUFACTURING, REPRODUCTION, USE AND SALES RIGHTS THERE TO, AND TO ANY ARTICLE DISCLOSED THEREIN EXCEPT TO THE EXTENT RIGHTS ARE EXPRESSLY GRANTED TO OTHERS. THE FOREGOING DOES NOT APPLY TO VENDOR PROPRIETARY PARTS.

ZONE	LTR	DESCRIPTION	DATE	APPROVED
	B	REDRAW ADD -11	3/15/88	TS
	C	ADD -13	1/11/89	TS
	D	ADD -15	4/17/90	SC
	E	SEE DCN 11160	4/20/90	SC
	F	ADD -17	6/8/90	SC
	G	REMOVED .03 MIN. DIM.	12/4/92	TC
	H	ADDED -19	1/27/94	TC
	J	SEE ECN J	1/29/99	T. CSIK
	K	SEE ECN K		
	L	SEE ECN L	9/14/99	E. WELSH



-1 THRU -19 RETAINER

12. APPLICABLE TO FAA-PMA REPLACEMENT OR MODIFICATION PARTS ONLY. PER FAR 45.15, PARTS WILL BE IDENTIFIED WITH:

1. FAA-PMA.
2. SKYLOCK IND. INC.
3. PART NO.
4. AIRCRAFT INSTALLATION ELIGIBILITY.

- 11 ROTATION: 90° LEFT HAND.
- 10 ROTATION: 180°.
- 9 ROTATION: 360°.
- 8. REMOVED.
- 7 FINISH REF.: BRIGHT BUFF AND ANODIZE PER MIL-A-8625, TYPE II, CLASS 2, DYED CANDY APPLE RED, OR EQUIV.
- 6 ROTATION: DETENTED EVERY 90°.

5. THE FOLLOWING STATIC LOAD IS FOR REFERENCE USE ONLY. IT IS PROVIDED FOR CUSTOMER ENGINEERING TO DETERMINE THE GENERAL SUITABILITY OF THE PRODUCT FOR ITS INTENDED USE. ALTHOUGH SKYLOCK IS PROVIDING THE REFERENCE STATIC LOAD, THE CUSTOMER IS ULTIMATELY RESPONSIBLE FOR CERTIFICATION OF THE PRODUCT FOR ITS SPECIFIC APPLICATION. REFERENCE STATIC LOAD: 650 LBS. MAX./SIDE. 1300 LBS. MAX. BOTH SIDES.

4 FINISH REF.: SATIN BRUSH LENGTHWISE TO PART SURFACE AND CLEAR ANODIZE PER MIL-A-8625, TYPE II, CLASS 2, OR EQUIV.

3. FINISH REF.: ALUM PARTS; CLEAR ANODIZE PER MIL-A-8625, TYPE II, CLASS 1, OR EQUIV. CRES PARTS; PASSIVATE PER AMS-QQ-P-35, TYPE II, OR EQUIV. SCREW; CAD PLATE PER QQ-P-416, TYPE II, CLASS 2, OR EQUIV.

2. MAT'L REF.: TURN; 6061-T6/T651 PER ASTM B-221, OR EQUIV. OTHER PARTS; 303 CRES, COND. A, PER AMS-5640N OR EQUIV.

1. REMOVE ALL BURRS AND SHARP CORNERS.  
NOTES: UNLESS OTHERWISE SPECIFIED.

QTY REQD	PART NO.	DESCRIPTION	MATERIAL SIZE APPLICATION	MAKE FROM
1. 625	-19	RETAINER	4 5 6 7 9	120195-19
2. 00	-17	RETAINER	4 5 6 9	120195-17
1. 19	-15	RETAINER	SAME AS -7 EXCEPT SCREW	120195-15
1. 875	-13	RETAINER	7 5 6 10	120195-13
1. 19	-11	RETAINER	4 5 6 11	120195-11
1. 625	-9	RETAINER	4 5 6 9	120195-9
1. 19	-7	RETAINER	7 5 6 10	120195-7
1. 19	-5	RETAINER	4 5 6 10	120195-5
1. 19	-3	RETAINER	7 5 6 9	120195-3
1. 19	-1	RETAINER	4 5 6 9	120195-1

PARTS LIST		DRAWN BY		CHECKED		ENGINEER		MFG		QC	
UNLESS OTHERWISE SPECIFIED		SINGELAKIS, T		DEAN VO		T. CSIK		P. MATSUOKA		J. VIVIRITO	
DIMENSIONS ARE IN INCHES		3/15/88		1/18/99		1/29/99		1/29/99		2/2/99	
TOLERANCES ON		SKYLOCK INDUSTRIES INCORPORATED MONROVIA CALIFORNIA U. S. A.		<p>20195 RETAINER</p>							
DECIMALS ANGLES DRILLED HOLES											
.X ± .1 ± 0° 30' AND 10387											
.XXX ± .010											
DO NOT SCALE THIS DRAWING		MATERIAL - FINISH		USED ON		SIZE		CODE IDENT. NO.		DRAWING NO.	
						C		51941		20195	
										L	
										SCALE 1: 1	
										VT. SHEET 1 OF 1	