

THE INFORMATION AND DESIGN HEREIN WAS ORIGINATED BY AND IS THE PROPERTY OF SKYLOCK INDUSTRIES INCORPORATED. SKYLOCK INDUSTRIES INCORPORATED RESERVES ALL PATENT, PROPRIETARY, DESIGN MANUFACTURING, REPRODUCTION, USE AND SALES RIGHTS THERE TO, AND TO ANY ARTICLE DISCLOSED THEREIN EXCEPT TO THE EXTENT RIGHTS ARE EXPRESSLY GRANTED TO OTHERS. THE FOREGOING DOES NOT APPLY TO VENDOR PROPRIETARY PARTS.

REVISIONS				
ZONE	LTR	DESCRIPTION	DATE	APPROVED
	NC	PRODUCTION RELEASE	11-1-93	T. CSIK

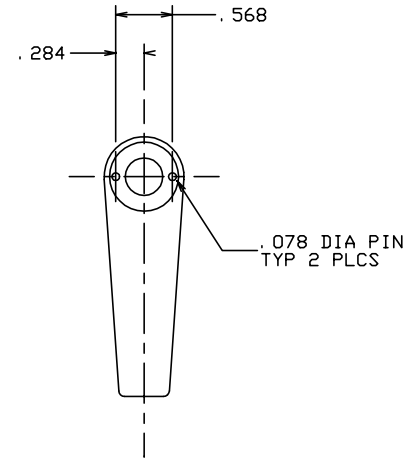
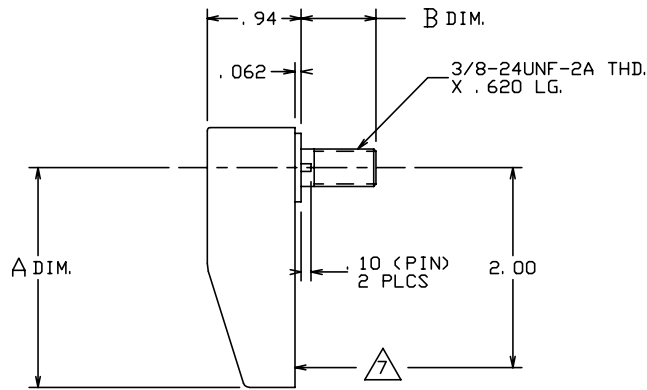
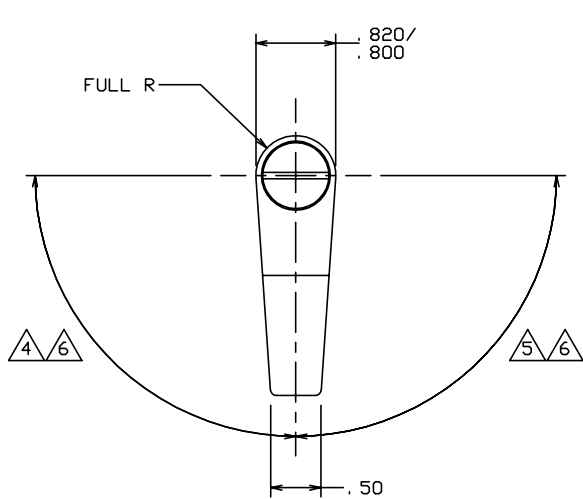
- NOTES: UNLESS OTHERWISE SPECIFIED.
- REMOVE ALL BURRS AND BREAK SHARP EDGES.
 - MAT'L: TURN - ALUM. ALLOY.
ALL OTHER COMP'S - ST. STL.
 - FINISH: TURN - BRIGHT POLISH AND CANDY APPLE RED ANODIZE.
STUD AND CAM ASSY - PASSIVATE.

4 90° LEFT HAND ROTATION, DETENTED AT EACH 90°.

5 90° RIGHT HAND ROTATION, DETENTED AT EACH 90°.

6 180° ROTATION, DETENTED AT EACH 90°.

7 STATIC LOAD: 460 LBS. MAX.



.75	2.20	-3	RETAINER	6		
1.81	4.25	-2	RETAINER	5		
1.81	4.25	-1	RETAINER	4		
B DIM.	A DIM.	PART NO.	DESCRIPTION	MATERIAL	SIZE SPECIFICATION	ITEM NO.

PARTS LIST

UNLESS OTHERWISE SPECIFIED
DIMENSIONS ARE IN INCHES
TOLERANCES ON
DECIMALS ANGLES DRILLED HOLES
.X ± .1 ± 0° 30' AND 10387
.XX ± .03
.XXX ± .010

DRAWN BY T. CSIK 11-1-93
CHECKED
ENGINEER
PROJECT
APPROVAL T. CSIK 11-1-93

SKYLOCK INDUSTRIES INCORPORATED
MONROVIA CALIFORNIA U. S. A.

1/4 TURN RETAINER

MATERIAL - FINISH	USED ON	SIZE	CODE IDENT. NO.	DRAWING NO.	REV.
NEXT ASSY		C	51941	20874	NC
FINAL ASSY		SCALE	1:1	VT.	SHEET 1 OF 1