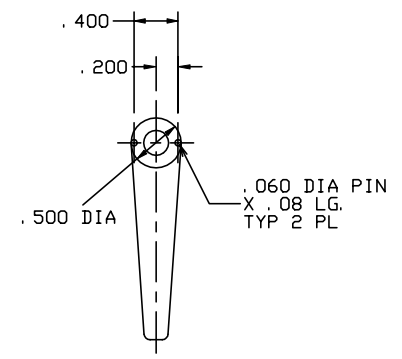
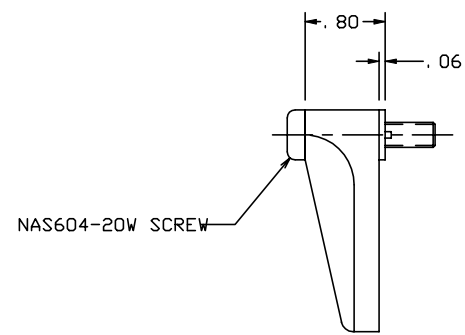
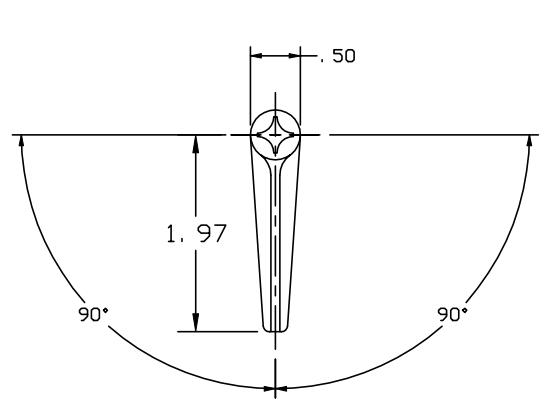



THE INFORMATION AND DESIGN HEREIN WAS ORIGINATED BY AND IS THE PROPERTY OF SKYLOCK INDUSTRIES INCORPORATED. SKYLOCK INDUSTRIES INCORPORATED RESERVES ALL PATENT, PROPRIETARY, DESIGN MANUFACTURING, REPRODUCTION, USE AND SALES RIGHTS THERE TO, AND TO ANY ARTICLE DISCLOSED THEREIN EXCEPT TO THE EXTENT RIGHTS ARE EXPRESSLY GRANTED TO OTHERS. THE FOREGOING DOES NOT APPLY TO VENDOR PROPRIETARY PARTS.

REVISIONS				
ZONE	LTR	DESCRIPTION	DATE	APPROVED
	NC	PRODUCTION RELEASE	1-17-89	T. S.
	A	DIM. IS .400 WAS .470	1-22-96	T. CSIK
	B	REDRAWN	6-5-97	T. CSIK
	C	SEE ECN C		

- NOTES: UNLESS OTHERWISE SPECIFIED.
- REMOVE ALL BURRS AND BREAK SHARP EDGES.
  - MAT'L REF.: RETAINER; 7075-T6/T651 PER ASTM B-221 OR EQUIV.  
CAM; 303 CRES, COND. A, PER AMS-5640N, OR  
304 CRES, COND. A, PER AMS-5639E, OR EQUIV.
  - FINISH REF.: ALUM.; BRIGHT POLISH, AND ANODIZE PER MIL-A-8625,  
TYPE II, CLASS 2, DYED CANDY APPLE RED.  
CRES; PASSIVATE PER AMS-QQ-P-35, TYPE II (303 CRES)  
TYPE VI OR VII (304 CRES)
  - APPLICABLE TO FAA-PMA REPLACEMENT  
OR MODIFICATION PARTS ONLY.  
PER FAR 45.15, PARTS WILL BE IDENTIFIED WITH:
    - FAA-PMA,
    - SKYLOCK IND. INC.
    - PART NO.
    - AIRCRAFT INSTALLATION ELIGIBILITY.



-401 RETAINER

-401 RETAINER				120630-401	
PART NO.	DESCRIPTION	MATERIAL SIZE SPECIFICATION	MAKE FROM		
PARTS LIST					
UNLESS OTHERWISE SPECIFIED	DRAWN BY SINGELAKIS	1-17-89	 SKYLOCK INDUSTRIES INCORPORATED MONROVIA CALIFORNIA U. S. A.		
DIMENSIONS ARE IN INCHES	CHECKED T. CSIK	9/1/99			
TOLERANCES ON	ENGINEER T. CSIK	9/1/99			
DECIMALS ANGLES DRILLED HOLES	MFG P. MATSUOKA	9/2/99			
.X ± .1 ± 0° 30' AND 10387	QC J. VIVIRITO	9/1/99			
.XX ± .03			20630 RETAINER		
.XXX ± .010					
DO NOT SCALE THIS DRAWING					
MATERIAL - FINISH	USED ON	SIZE	CODE IDENT. NO.	DRAWING NO.	REV.
NEXT ASSY		C	51941	20630	C
MANUFACTURE IN ACCORDANCE WITH SKYLOCK IND. INC., QUALITY CONTROL MANUAL QC.001		SCALE 1: 1	VT.	SHEET 1	OF 1