

THE INFORMATION AND DESIGN HEREIN WAS ORIGINATED BY AND IS THE PROPERTY OF SKYLOCK INDUSTRIES INCORPORATED. SKYLOCK INDUSTRIES INCORPORATED RESERVES ALL PATENT, PROPRIETARY, DESIGN MANUFACTURING, REPRODUCTION, USE AND SALES RIGHTS THERE TO, AND TO ANY ARTICLE DISCLOSED THEREIN EXCEPT TO THE EXTENT RIGHTS ARE EXPRESSLY GRANTED TO OTHERS. THE FOREGOING DOES NOT APPLY TO VENDOR PROPRIETARY PARTS.

REVISIONS				
ZONE	LTR	DESCRIPTION	DATE	APPROVED
	P	ADDED -437 THRU -439	3-18-96	T. CSIK
	R	ADDED -441 & -442	11-6-96	T. CSIK
	S	ADDED -443 & -444	7-18-97	T. CSIK
	T	ADDED -445 & -446	10-22-97	T. CSIK
	U	SEE ECN U	7-30-98	T. CSIK

NOTES: UNLESS OTHERWISE SPECIFIED.

- REMOVE ALL BURRS AND BREAK SHARP EDGES.
- MAT'L: RETAINER; 7075-T651 ALUM. ALLOY, STUD; 17-4PH CRES., H. T. TO H900 PER MIL-H-6875, BASE ASSY; 300 SERIES CRES., OTHER COMP'S; ALUM. ALLOY AND CRES.
- REMOVED.
- FINISH: RETAINER; BRIGHT BUFF, AND CANDY APPLE RED ANODIZE PER MIL-A-8625, BASE ASSY; GLASS BEAD PEEN, DRY FILM LUBRICATE, AND SATIN BRUSH APPEARANCE SURFACE, STUD; GLASS BEAD PEEN, DRY FILM LUBRICATE BEARING AND THREADED SURFACES ONLY.
- STATIC LOAD: 3000 LBS. MAX.
- SHAFT NEEDS NO TORQUE ADJUSTMENT. TIGHTEN SHAFT AS MUCH AS POSSIBLE WHEN INSTALLING RETAINER.
- FINISH: RETAINER; SATIN BRUSH, AND CLEAR ANODIZE PER MIL-A-8625, BASE ASSY; GLASS BEAD PEEN, DRY FILM LUBRICATE, AND SATIN BRUSH APPEARANCE SURFACE, STUD; GLASS BEAD PEEN, DRY FILM LUBRICATE BEARING AND THREADED SURFACES ONLY.
- PROTECTIVE FINISH: CADMIUM PLATE PER QQ-P-416, TYPE II, CLASS II, COMPLETE THREADED PORTION OF STUD ONLY.

.82	2.61	1.05	2.38	-426	RETAINER ASSY	<90° RIGHT HAND	7
.82	2.61	1.05	2.38	-425	RETAINER ASSY	<90° LEFT HAND	7
.50	.50	1.05	2.38	-424	RETAINER ASSY	<90° RIGHT HAND	7
.50	.50	1.05	2.38	-423	RETAINER ASSY	<90° LEFT HAND	7
.82	2.61	1.05	4.50	-422	RETAINER ASSY	<90° RIGHT HAND	7
.82	2.61	1.05	4.50	-421	RETAINER ASSY	<90° LEFT HAND	7
.82	2.61	1.05	2.38	-420	RETAINER ASSY	<90° RIGHT HAND	7
.82	2.61	1.05	2.38	-419	RETAINER ASSY	<90° LEFT HAND	7
.82	.80	1.05	2.13	-418	RETAINER ASSY	<90° RIGHT HAND	4
.82	.80	1.05	2.13	-417	RETAINER ASSY	<90° LEFT HAND	4
.82	.80	1.05	4.60	-416	RETAINER ASSY	<90° RIGHT HAND, 45° DETENT	4
.82	.80	1.05	4.60	-415	RETAINER ASSY	<90° LEFT HAND, 45° DETENT	4
1.00	1.32	1.362	4.50	-414	RETAINER ASSY	<90° RIGHT HAND	4
1.00	1.32	1.362	4.50	-413	RETAINER ASSY	<90° LEFT HAND	4
1.00	1.32	1.05	4.50	-412	RETAINER ASSY	<90° RIGHT HAND	4
1.00	1.32	1.362	2.13	-410	RETAINER ASSY	<90° RIGHT HAND	4
1.00	1.32	1.362	2.13	-409	RETAINER ASSY	<90° LEFT HAND	4
1.00	1.32	1.05	2.13	-408	RETAINER ASSY	<90° RIGHT HAND	4
1.00	1.32	1.05	2.13	-407	RETAINER ASSY	<90° LEFT HAND	4
.82	1.32	1.05	4.60	-406	RETAINER ASSY	<90° RIGHT HAND, 45° DETENT	4
.82	1.32	1.05	4.60	-405	RETAINER ASSY	<90° LEFT HAND, 45° DETENT	4
.82	1.32	1.05	4.50	-404	RETAINER ASSY	<90° RIGHT HAND	4
.82	1.32	1.05	4.50	-403	RETAINER ASSY	<90° LEFT HAND	4
.82	1.32	1.05	2.13	-402	RETAINER ASSY	<90° RIGHT HAND	4
.82	1.32	1.05	2.13	-401	RETAINER ASSY	<90° LEFT HAND	4

.82	.80	1.05	4.60	-448	RETAINER ASSY	<90° RIGHT HAND	7
.82	.80	1.05	4.60	-447	RETAINER ASSY	<90° LEFT HAND	7
.82	.80	1.05	3.38	-446	RETAINER ASSY	<90° RIGHT HAND	4
.82	.80	1.05	3.38	-445	RETAINER ASSY	<90° LEFT HAND	4
.82	1.32	1.05	3.38	-444	RETAINER ASSY	<90° RIGHT HAND	4
.82	1.32	1.05	3.38	-443	RETAINER ASSY	<90° LEFT HAND	4
.82	1.32	1.05	6.00	-442	RETAINER ASSY	<90° RIGHT HAND	4
.82	1.32	1.05	6.00	-441	RETAINER ASSY	<90° LEFT HAND	4
.62	1.32	1.05	5.00	-439	RETAINER ASSY	<180°, DETENTED AT 45°	4
.62	1.32	1.05	5.00	-438	RETAINER ASSY	<90° RIGHT HAND, DETENTED AT 45°	4
.62	1.32	1.05	5.00	-437	RETAINER ASSY	<90° LEFT HAND, DETENTED AT 45°	4
.82	1.88	1.05	4.60	-436	RETAINER ASSY	<90° RIGHT HAND	4
.82	1.88	1.05	4.60	-435	RETAINER ASSY	<90° LEFT HAND	4
.82	1.88	1.05	2.13	-434	RETAINER ASSY	<90° RIGHT HAND	4
.82	1.88	1.05	2.13	-433	RETAINER ASSY	<90° LEFT HAND	4
.82	2.61	1.05	2.13	-432	RETAINER ASSY	<90° RIGHT HAND	4
.82	2.61	1.05	2.13	-431	RETAINER ASSY	<90° LEFT HAND	4
.82	2.61	1.05	4.60	-430	RETAINER ASSY	<90° RIGHT HAND	4
.82	2.61	1.05	4.60	-429	RETAINER ASSY	<90° LEFT HAND	4
.82	2.61	1.05	4.50	-428	RETAINER ASSY	<90° RIGHT HAND	7
.82	2.61	1.05	4.50	-427	RETAINER ASSY	<90° LEFT HAND	7

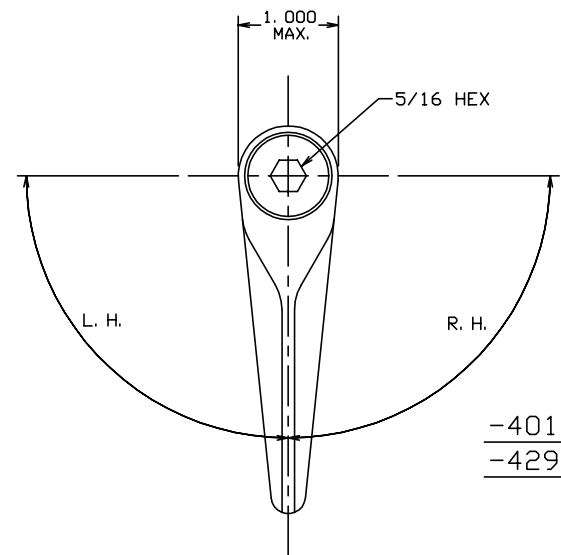
D DIM	C DIM	B DIM	A DIM	PART NO.	DESCRIPTION	MATERIAL	SIZE	SPECIFICATION
PARTS LIST								
UNLESS OTHERWISE SPECIFIED				DRAWN BY T. CSIK		4-6-92		
DIMENSIONS ARE IN INCHES				CHECKED				
TOLERANCES ON				ENGINEER				
DECIMALS ANGLES DRILLED HOLES				PROJECT				
.X ± .1 ± 0° 30' AND 10387				APPROVAL T. CSIK		4-6-92		
.XXX ± .010				APPROVAL				
DO NOT SCALE THIS DRAWING				USED ON				
MATERIAL - FINISH				SIZE		CODE IDENT. NO.		DRAWING NO.
NEXT ASSY				C		51941		20768
FINAL ASSY				SCALE 1:1		VT.		SHEET 1 OF 2



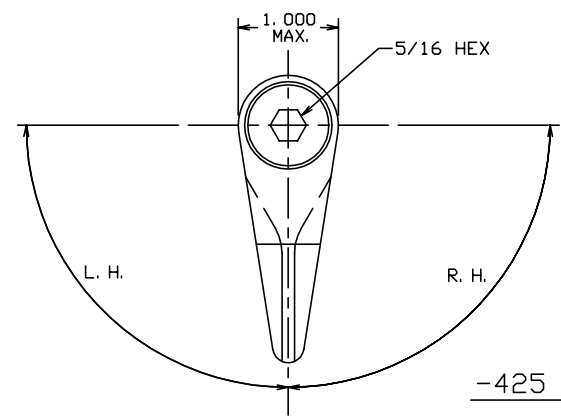
1/4 TURN RETAINER

THE INFORMATION AND DESIGN HEREIN WAS ORIGINATED BY AND IS THE PROPERTY OF SKYLOCK INDUSTRIES INCORPORATED. SKYLOCK INDUSTRIES INCORPORATED RESERVES ALL PATENT, PROPRIETARY, DESIGN MANUFACTURING, REPRODUCTION, USE AND SALES RIGHTS THERE TO, AND TO ANY ARTICLE DISCLOSED THEREIN EXCEPT TO THE EXTENT RIGHTS ARE EXPRESSLY GRANTED TO OTHERS. THE FOREGOING DOES NOT APPLY TO VENDOR PROPRIETARY PARTS.

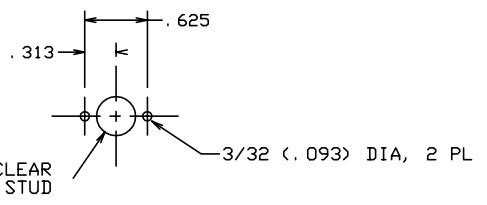
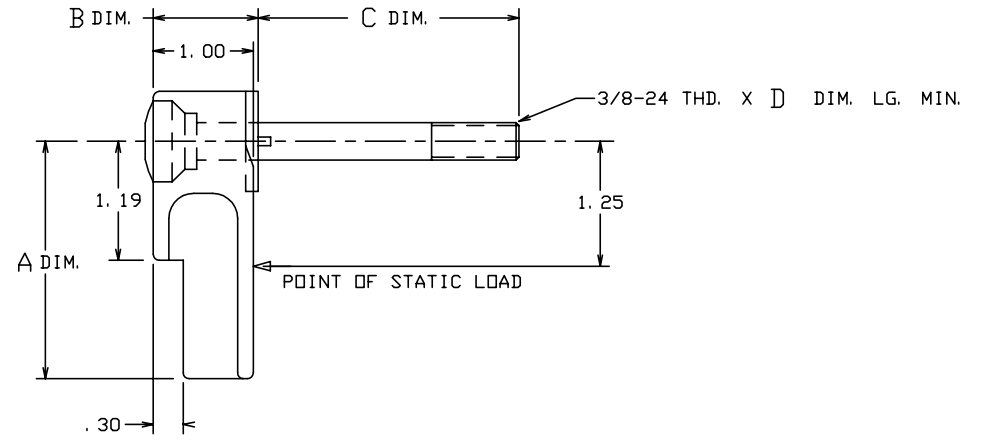
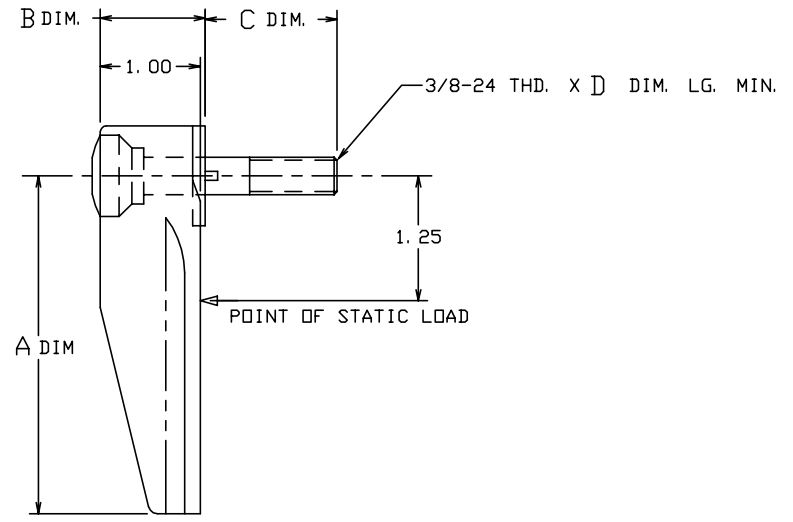
REVISIONS				
ZONE	LTR	DESCRIPTION	DATE	APPROVED
		SEE SHT. 1 FOR NOTES		



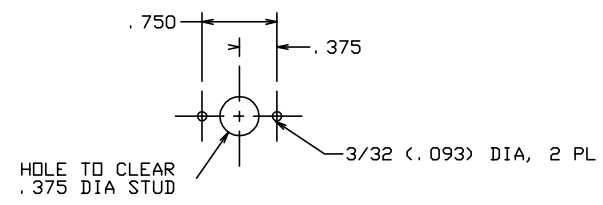
-401 THRU -424
-429 THRU -448



-425 THRU -428




HOLE TO CLEAR
.375 DIA STUD



HOLE TO CLEAR
.375 DIA STUD

SUGGESTED PANEL CUTOUT
(-401 THRU -418, -429 THRU -442)

SUGGESTED PANEL CUTOUT
(-419 THRU -428)

 SKYLOCK INDUSTRIES INCORPORATED MONROVIA CALIFORNIA U. S. A.			
<h3>1/4 TURN RETAINER</h3>			
SIZE C	CODE IDENT. NO. 51941	DRAWING NO. 20768	REV. U
SCALE 1: 1	VT.	SHEET 2 OF 2	