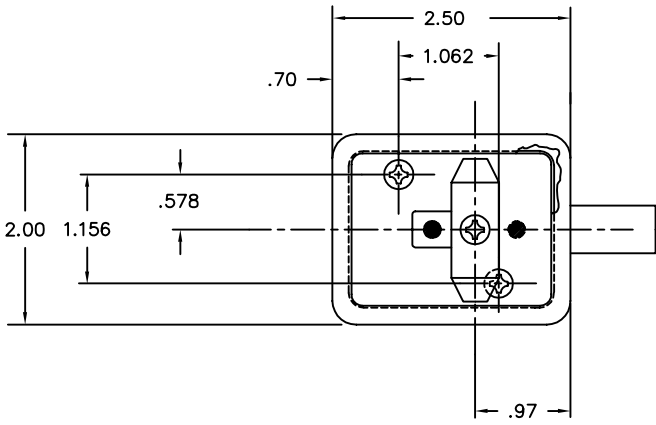
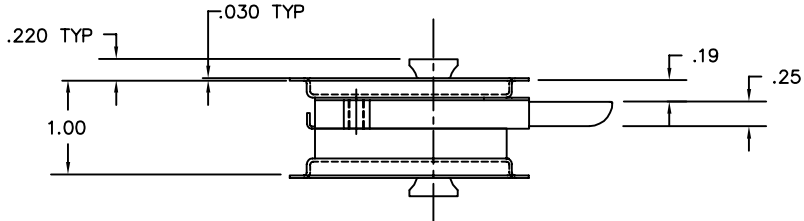
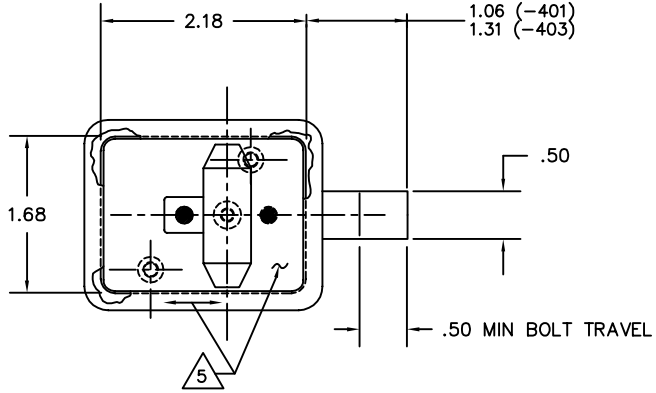


THE INFORMATION AND DESIGN HEREIN WAS ORIGINATED BY AND IS THE PROPERTY OF SKYLOCK INDUSTRIES INCORPORATED. SKYLOCK INDUSTRIES INCORPORATED RESERVES ALL PATENT, PROPRIETARY, DESIGN, MANUFACTURING, REPRODUCTION, USE AND SALES RIGHTS THEREIN, AND TO ANY ARTICLE DISCLOSED THEREIN EXCEPT TO THE EXTENT RIGHTS ARE EXPRESSLY GRANTED TO OTHERS. THE FOREGOING DOES NOT APPLY TO VENDOR PROPRIETARY PARTS.

REVISIONS:				
ZONE	LTR	DESCRIPTION	DATE	APPROVED
	NC	PRODUCTION RELEASE	6.21.93	SC
	A	ADDED -403	9.25.93	SC

NOTES: UNLESS OTHERWISE SPECIFIED

1. REMOVE ALL BURRS AND SHARP EDGES
2. MAT'L: HANDLES ; ALUM ALLOY;  
ALL OTHER COMPONENTS; CRES
3. FINISH: HANDLES; SATIN BRUSH AND CLEAR ANODIZE  
CRES; PASSIVATE
4. LATCH IS DETENTED IN EXTENDED AND RETRACTED POSITIONS.
5. DECORATIVE FINISH: CASE, FLANGES; SATIN BRUSH AS NOTED; CASE RECESS; SATIN MATTE.
6. GREEN AND RED DOTS ARE VISIBLE WHEN BOLT IS IN EXTENDED AND RETRACTED POSITIONS RESPECTIVELY.



	-403	LATCH ASSY		
	-401	LATCH ASSY		
QTY REQ'D	PART / IDENT NO.	DESCRIPTION	MATERIAL / SPECIFICATION	ITEM NO.
UNLESS OTHERWISE SPECIFIED: DIMENSIONS ARE IN INCHES		CONTRACT NO.		 SKYLOCK INDUSTRIES INCORPORATED MONROVIA, CALIFORNIA, USA
DECIMALS	TOLERANCES	ANGULAR	DRAWN BY	
.XX & .03		± 0 30'	S. CSIK	
.XXX & .010			CHECK	
DO NOT SCALE DRAWING		NEXT ASSY	DESIGN	
		FINAL ASSY	DESIGN ACTIVITY	
USED ON	ACT WT	CALC WT	CUSTOMER	
SCALE	SIZE	FSCM NO.	DRAWING NO.	REV.
NONE	C	51941	20837	A
RELEASE DATE		SHEET		OF
6.21.93		1		1

DRAWING NO. SHEET OF