


THE INFORMATION AND DESIGN HEREIN WAS ORIGINATED BY AND IS THE PROPERTY OF SKYLOCK INDUSTRIES INCORPORATED. SKYLOCK INDUSTRIES INCORPORATED RESERVES ALL PATENT, PROPRIETARY, DESIGN, MANUFACTURING, REPRODUCTION, USE AND SALES RIGHTS THEREIN, AND TO ANY ARTICLE DISCLOSED THEREIN EXCEPT TO THE EXTENT RIGHTS ARE EXPRESSLY GRANTED TO OTHERS. THE FOREGOING DOES NOT APPLY TO VENDOR PROPRIETARY ITEMS.

NOTES: UNLESS OTHERWISE SPECIFIED.

1. MAT'L REF.: TURN-ALUM. 6061-T6/T651 PER ASTM B-221, OR EQUIV.
CAM AND OTHER COMPONENTS; 300 SERIES CRES, PER AMS-5640N, OR EQUIV.
2. FINISH REF.: ALUMINUM PARTS: CLEAR ANODIZE PER MIL-A-8625, TYPE II, CLASS I, OR EQUIV.
CRES PARTS: PASSIVATE PER AMS-QQ-P-35, TYPE II, OR EQUIV.
SCREW: CADMIUM PLATE PER QQ-P-416, TYPE II, CLASS 2, OR EQUIV.
3. DECORATIVE FINISH REF.: SATIN BUFF LENGTHWISE TO PART SURFACE,
AND CLEAR ANODIZE PER MIL-A-8625, TYPE II, CLASS 1, OR EQUIV.
4. REMOVED.
5. REMOVED.
6. DETENT EACH 90° OF ROTATION THRU 180° AS INDICATED.
7. DECORATIVE FINISH REF.: BRIGHT POLISH, AND ANODIZE PER MIL-A-8625,
TYPE II, CLASS 2, DYED CANDY APPLE RED, OR EQUIV.
8. DELETED.
9. ROTATION: 90° RIGHT HAND.
10. ROTATION: 90° LEFT HAND.
11. APPLICABLE TO FAA-PMA REPLACEMENT
OR MODIFICATION PARTS ONLY.
PER FAR 45.15, PARTS WILL BE IDENTIFIED WITH:
 1. FAA-PMA.
 2. SKYLOCK IND. INC.
 3. PART NO.
 4. AIRCRAFT INSTALLATION ELIGIBILITY.

| REVISIONS | | | | |
|-----------|-----|--------------------------------|----------|----------|
| ZONE | LTR | DESCRIPTION | DATE | APPROVED |
| | NC | PRODUCTION RELEASE | 6-5-81 | M. F. |
| | A | ADDED -9 | 1-14-88 | T. S. |
| | B | ADDED -11, -13 | 8-4-89 | S. C. |
| | C | REDRAWN, REMOVED -9, ADDED -15 | 4-20-98 | T. C. |
| | D | ADDED -17 | 5-20-98 | T. C. |
| | E | SEE ECN E | 12/31/98 | T. C. |
| | F | SEE ECN F | 10/19/99 | T. C. |

| | | | | |
|--|----------|-------------|------------------------------|------------|
| | -17 | RETAINER | $\triangle_6 \triangle_7$ | 120359-217 |
| | -15 | RETAINER | $\triangle_6 \triangle_7$ | 120359-215 |
| | -13 | RETAINER | $\triangle_7 \triangle_{10}$ | 120359-213 |
| | -11 | RETAINER | $\triangle_7 \triangle_9$ | 120359-211 |
| | -9 | REMOVED | | 120359-209 |
| | -7 | RETAINER | $\triangle_6 \triangle_7$ | 120359-207 |
| | -5 | RETAINER | $\triangle_3 \triangle_6$ | 120359-205 |
| | -3 | RETAINER | $\triangle_6 \triangle_7$ | 120359-203 |
| | -1 | RETAINER | $\triangle_3 \triangle_6$ | 120359-201 |
| | PART NO. | DESCRIPTION | | MAKE FROM |

| PARTS LIST | | | | | |
|---|----------|-------------|-----------------|---|--------------|
| UNLESS OTHERWISE SPECIFIED | DRAWN BY | M. FOSTER | 6-5-81 |  SKYLOCK INDUSTRIES INCORPORATED MONROVIA CALIFORNIA U. S. A. | |
| DIMENSIONS ARE IN INCHES | CHECKED | DEAN VO | 12/29/98 | | |
| TOLERANCES ON | ENGINEER | T. CSIK | 12/31/98 | | |
| DECIMALS ANGLES DRILLED HOLES | MFG | P. MATSUOKA | 1/6/99 | | |
| .X ± .1 ± 0° 30' AND 10387 | QC | J. VIVIRITO | 1/12/99 | | |
| .XX ± .03 | | | | 20359 RETAINER | |
| .XXX ± .010 | | | | | |
| DO NOT SCALE THIS DRAWING | | | | | |
| MATERIAL - FINISH | USED ON | SIZE | CODE IDENT. NO. | DRAWING NO. | REV. |
| NEXT ASSY | | C | 51941 | 20359 | F |
| MANUFACTURE IN ACCORDANCE WITH SKYLOCK IND. INC., QUALITY CONTROL. QC.001 | | SCALE | NONE | VT. | SHEET 1 OF 2 |

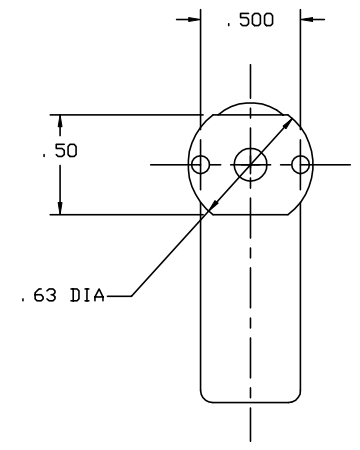
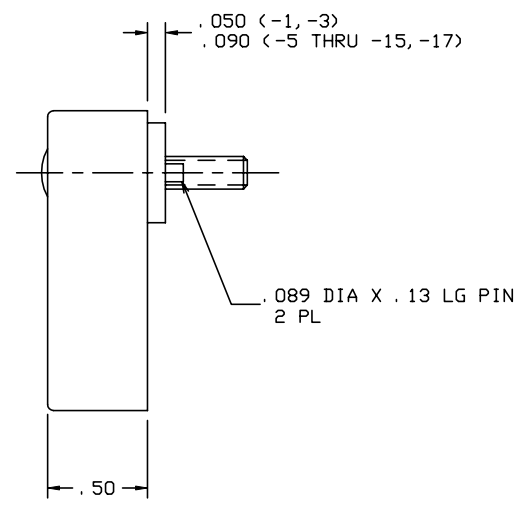
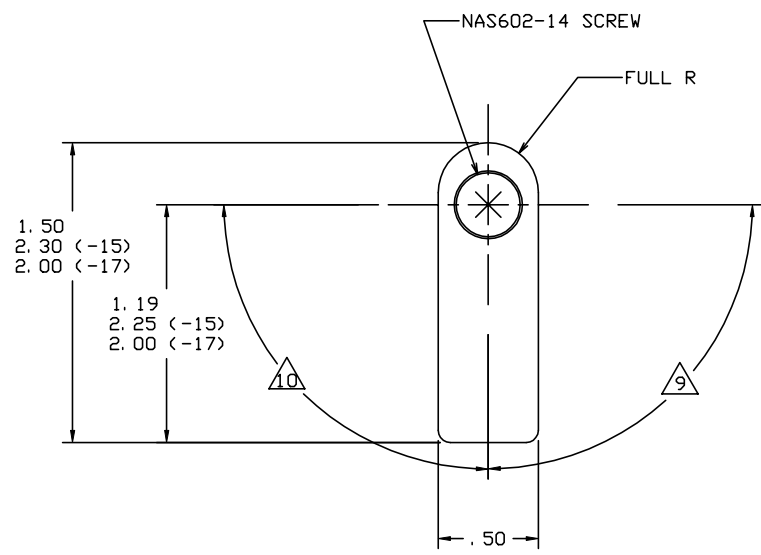
4

3

2

1

| REVISIONS | | | | |
|-----------|-----|----------------------|------|----------|
| ZONE | LTR | DESCRIPTION | DATE | APPROVED |
| | | SEE SHT. 1 FOR NOTES | | |



-1 THRU -17 RETAINER SHOWN


 SKYLOCK INDUSTRIES INCORPORATED
 MONROVIA CALIFORNIA U. S. A.

20359 RETAINER

| | | | |
|-------|-----------------|-------------|--------------|
| SIZE | CODE IDENT. NO. | DRAWING NO. | REV. |
| C | 51941 | 20359 | F |
| SCALE | 2: 1 | VT. | SHEET 2 OF 2 |

4

3

2

1