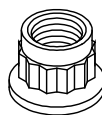
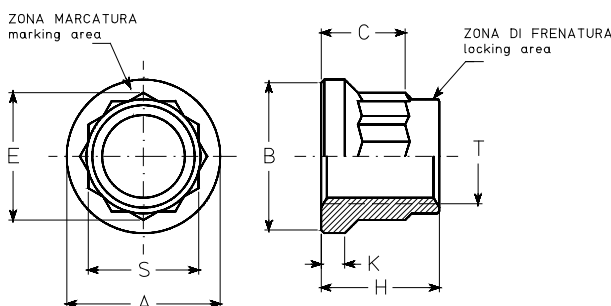




PAOLO ASTORI s.r.l.
via Mirabella 9-MAGGIATE SUP.
I 28013-GATTICO (NO)



PDP10
PDP11



dimensioni in pollici. *dimensions in inches.*

codice dimensioni <i>dimensions code</i>	filettatura <i>thread</i> T	A max.	B min.	C min.	E min.	H max.	K min.	S h12	massa libbre/100 pezzi <i>mass lbs/100 pieces</i>
4	1/4-28 UNJF 3B	.434	.394	.102	.347	.250	.020	.313	.42
5	5/16-24 UNJF 3B	.532	.492	.155	.418	.312	.035	.376	.71
6	3/8-24 UNJF 3B	.631	.591	.185	.490	.375	.056	.439	1.26
7	7/16-20 UNJF 3B	.729	.689	.225	.631	.438	.069	.564	2.12
8	1/2-20 UNJF 3B	.828	.788	.264	.703	.500	.074	.627	3.01

codice materiali <i>materials code</i>	materiale <i>material</i>	finitura <i>finish</i>	durezza HR _C <i>hardness HR_C</i>	classe resistenza <i>strenght class</i>	classe temperatura <i>temperature class</i>
PDP10L	W1.7220.4 acciaio- <i>steel</i>	cadmiatura+MoS ₂ <i>cadmium plating+MoS₂</i>	44 max.	1250 MPa	235°C
PDP10C	35CrMo4	cadmiatura + cetyl alcol <i>cadmium plate + cetyl alcohol</i>			
PDP11X	W1.4944.4 lega A286 <i>A286 alloy</i>	passivazione <i>passivation</i>	27-37		425°C
PDP11L		passivazione+MoS ₂ <i>passivation+MoS₂</i>			
PDP11A		argentatura <i>silver plating</i>			

FILETTO: profilo per MIL-S-8879, prima della lubrificazione
 MARCATURA: simbolo α del costruttore e codice dimensioni.
 METALLOSCOPIO: controllo al 100%.
 NORMA di costruzione e controllo:NAS3350, classe III.

THREAD: profile per MIL-S-8879 before lubrication.
 MARKING: manufacturer symbol α and dimensions code. α
 MAGNETIC INSPECTION: 100% on nuts.
 PROCUREMENT specification: NAS3350, class III.

DESIGNAZIONE ASTORI:codice materiali-codice dimensioni.
 Esempio: PDP10L-5 indica un dado a disegno PDP10, in acciaio
 cadmiato, filettatura 5/16-24, lubrificato con MoS₂.

ASTORI CALL OUT: materials code-dimensions code.
 Example: PDP10L-05 designates a nut according to PDP10
 drawing, in steel, cadmium plated, with 5/16-24 thread, and MoS₂
 lubrication.

Riferimenti NAS1804 NAS1805	<i>Reference spec.</i>	DADO A 12 PUNTE, AUTOFRENANTE NUT, 12 POINTS, SELF-LOCKING	PDP10 PDP11
---	------------------------	---	------------------------------