

THE INFORMATION AND DESIGN HEREIN WAS ORIGINATED BY AND IS THE PROPERTY OF SKYLOCK INDUSTRIES INCORPORATED. SKYLOCK INDUSTRIES INCORPORATED RESERVES ALL PATENT, PROPRIETARY, DESIGN MANUFACTURING, REPRODUCTION, USE AND SALES RIGHTS THEREON, AND TO ANY ARTICLE DISCLOSED THEREIN EXCEPT TO THE EXTENT RIGHTS ARE EXPRESSLY GRANTED TO OTHERS. THE FOREGOING DOES NOT APPLY TO VENDOR PROPRIETARY PARTS.

REVISIONS				
ZONE	LTR	DESCRIPTION	DATE	APPROVED
	NC	PRODUCTION RELEASE	1-27-93	T. C.

NOTES: UNLESS OTHERWISE SPECIFIED.

- REMOVE ALL BURRS AND BREAK SHARP EDGES.
- MAT'L: TURN; 2024-T3 ALUM. ALLOY
ALL OTHER COMPS; 303 CRES.
- FINISH: CRES; SATIN BRUSH AND PASSIVATE.

4 DECORATIVE FINISH: BRIGHT BUFF AND CANDY APPLE RED ANODIZE.

5 DECORATIVE FINISH: SATIN BRUSH AND CLEAR ANODIZE.

6 DECORATIVE FINISH: BRIGHT BUFF AND CLEAR ANODIZE.

7 ROTATION: 360 DEGREES; DETENTED EVERY 90 DEGREES.

8 ROTATION: 180 DEGREES; DETENTED EVERY 90 DEGREES.

9 ROTATION; 90 DEGREES LEFT HAND.

10 ROTATION; 90 DEGREES RIGHT HAND.

11. STATIC LOAD ESTABLISHED BY QUALIFICATION TEST.

12. SHAFT NEEDS NO TORQUE ADJUSTMENT; TIGHTEN SHAFT AS MUCH AS POSSIBLE WHEN INSTALLING RETAINER.

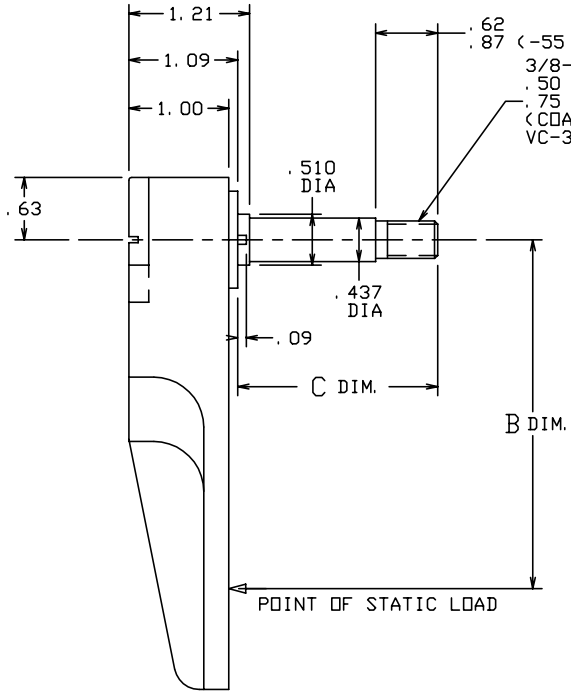
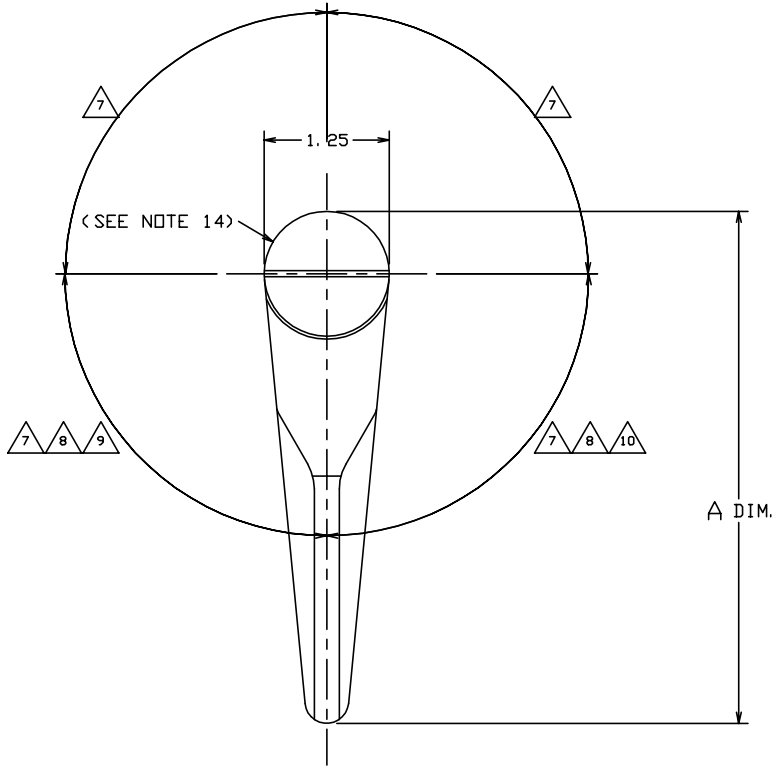
13. ALL RETAINERS HAVE THREADS COATED WITH VC-3 VIBRATITE.

14. TURN ASSY HAS SLOTTED HEAD STUD STD. TO ORDER TURN ASSY WITH 1/4 HEX SOCKET ON HEAD OF STUD ADD 'H' AFTER DASH NUMBER.

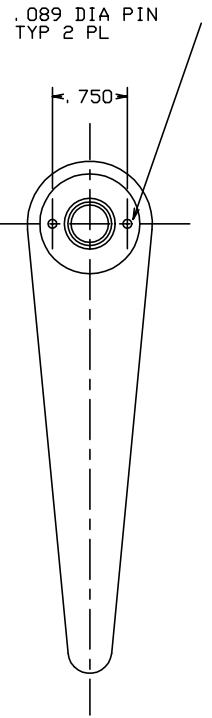
1940 LBS.	1. 10	3. 25	5. 12		-61	RETAINER	4	9
1940 LBS.	1. 10	3. 25	5. 12		-59	RETAINER	4	10
1940 LBS.	1. 10	3. 25	5. 12		-57	RETAINER	4	8
1940 LBS.	1. 10	3. 25	5. 12		-55	RETAINER	4	7
3000 LBS.	2. 00	1. 62	2. 74		-53	RETAINER	4	7
3000 LBS.	2. 00	1. 62	2. 74		-51	RETAINER	4	8
3000 LBS.	2. 00	1. 62	2. 74		-49	RETAINER	4	9
3000 LBS.	2. 00	1. 62	2. 74		-47	RETAINER	4	10
1940 LBS.	2. 00	3. 25	5. 12		-45	RETAINER	4	9
1940 LBS.	2. 00	3. 25	5. 12		-43	RETAINER	4	10
1940 LBS.	2. 00	3. 25	5. 12		-41	RETAINER	4	8
1940 LBS.	2. 00	3. 25	5. 12		-39	RETAINER	4	7
900 LBS.	1. 24	7. 00	8. 12		-37	RETAINER	4	8
800 LBS.	1. 24	4. 25	6. 62		-35	RETAINER	5	9
800 LBS.	1. 24	4. 25	6. 62		-33	RETAINER	5	10
800 LBS.	1. 24	4. 25	6. 62		-31	RETAINER	5	8
800 LBS.	1. 24	4. 25	6. 62		-29	RETAINER	5	7
1940 LBS.	. 74	3. 25	5. 12		-27	RETAINER	5	7
1940 LBS.	1. 24	3. 25	5. 12		-25	RETAINER	5	9
1940 LBS.	1. 24	3. 25	5. 12		-23	RETAINER	5	10
1940 LBS.	1. 24	3. 25	5. 12		-21	RETAINER	5	8
1940 LBS.	1. 24	3. 25	5. 12		-19	RETAINER	5	7
800 LBS.	1. 24	4. 25	6. 62		-17	RETAINER	4	9
800 LBS.	1. 24	4. 25	6. 62		-15	RETAINER	4	10
800 LBS.	1. 24	4. 25	6. 62		-13	RETAINER	4	8
800 LBS.	1. 24	4. 25	6. 62		-11	RETAINER	4	7
1940 LBS.	. 74	3. 25	5. 12		-9	RETAINER	4	7
1940 LBS.	1. 24	3. 25	5. 12		-7	RETAINER	4	9
1940 LBS.	1. 24	3. 25	5. 12		-5	RETAINER	4	10
1940 LBS.	1. 24	3. 25	5. 12		-3	RETAINER	4	8
1940 LBS.	1. 24	3. 25	5. 12		-1	RETAINER	4	7
STATIC LOAD	C DIM	B DIM	A DIM	PART NO.		DESCRIPTION		

PARTS LIST		UNLESS OTHERWISE SPECIFIED		DRAWN BY T. CSIK 1-27-93		 SKYLOCK INDUSTRIES INCORPORATED MONROVIA CALIFORNIA U. S. A.	
DIMENSIONS ARE IN INCHES		TOLERANCES ON		CHECKED			1/4 TURN RETAINER
DECIMALS ANGLES DRILLED HOLES		DECIMALS ANGLES DRILLED HOLES		ENGINEER			
.X ± .1 ± 0° 30' AND 10387		.XX ± .03 ± 0° 30'		PROJECT			
.XXX ± .010		DO NOT SCALE THIS DRAWING		APPROVAL T. CSIK 1-27-93			
MATERIAL - FINISH		NEXT ASSY		USED ON		SIZE C CODE IDENT. NO. 51941 DRAWING NO. 20804 REV. NC	
FINAL ASSY						SCALE NONE WT. SHEET 1 OF 2	

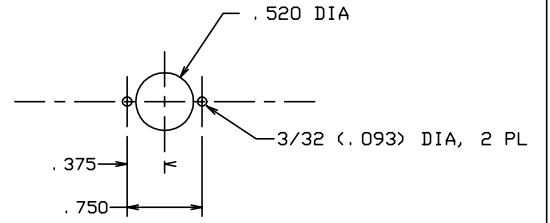
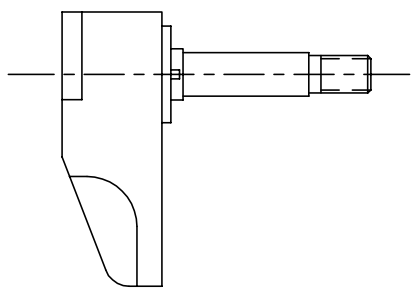
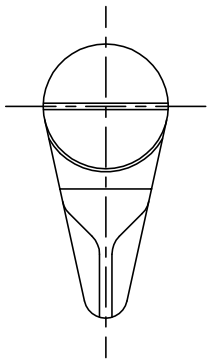
REVISIONS				
ZONE	LTR	DESCRIPTION	DATE	APPROVED
		SEE SHT. 1		



.62
.87 (-55 THRU -61)
3/8-24UNF THD.
.50 THD. MIN.
.75 MIN. (-55 THRU -61)
(COAT THD. WITH
VC-3 VIBRATITE)



-1 THRU -45, -55 THRU -61, -65, -67, -69, -79, -81 SHOWN



SUGGESTED PANEL CUTOUT

-47 THRU -53, -63, -71 THRU -77 SHOWN REF

SKYLOCK INDUSTRIES INCORPORATED
MONROVIA CALIFORNIA U. S. A.

1/4 TURN RETAINER

SIZE	CODE IDENT. NO.	DRAWING NO.	REV.
C	51941	20804	NC
SCALE	NONE	VT.	SHEET 2 OF 2