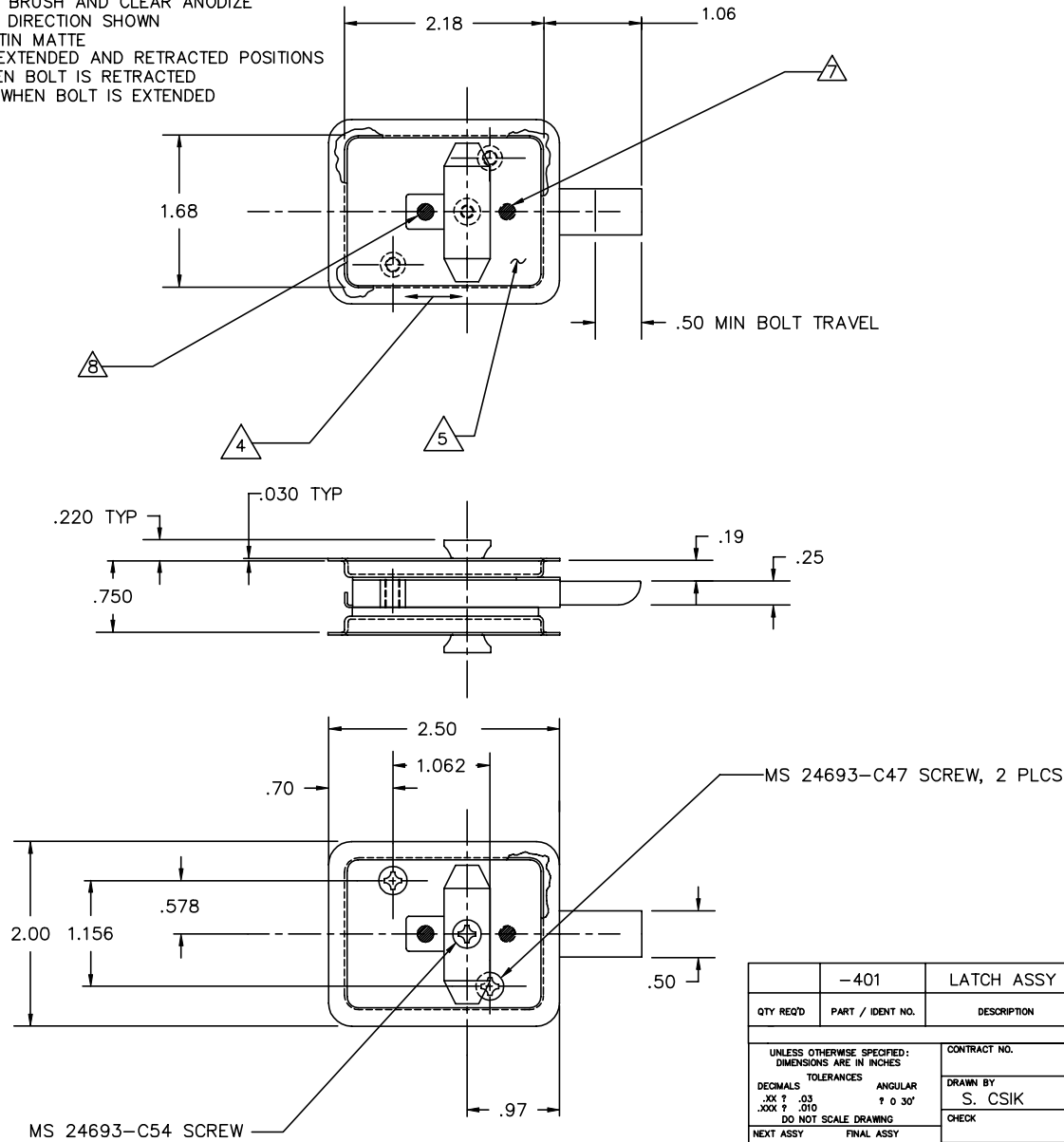


THE INFORMATION AND DESIGN HEREIN WAS ORIGINATED BY AND IS THE PROPERTY OF SKYLOCK INDUSTRIES INCORPORATED. SKYLOCK INDUSTRIES INCORPORATED RESERVES ALL PATENT, PROPRIETARY, DESIGN MANUFACTURING, REPRODUCTION, USE AND SALES RIGHTS THEREON, AND TO ANY ARTICLE DISCLOSED THEREIN EXCEPT TO THE EXTENT RIGHTS ARE EXPRESSLY GRANTED TO OTHERS. THE FOREGOING DOES NOT APPLY TO VENDOR PROPRIETARY PARTS.

REVISIONS:				
ZONE	LTR	DESCRIPTION	DATE	APPROVED
NC		PRODUCTION RELEASE	8/1	SC
A		ADD .70 DIM, DELETE .56 (B-3)	3.23	SC

NOTES: UNLESS OTHERWISE SPECIFIED

1. REMOVE ALL BURRS AND SHARP EDGES
2. MAT'L: HANDLES ; ALUM ALLOY;
ALL OTHER COMPONENTS; 300 SERIES CRES
3. FINISH: HANDLES; SATIN BRUSH AND CLEAR ANODIZE
4. FINISH: SATIN BRUSH IN DIRECTION SHOWN
5. FINISH: AREA TO BE SATIN MATTE
6. LATCH IS DETENTED IN EXTENDED AND RETRACTED POSITIONS
7. RED DOT IS VISIBLE WHEN BOLT IS RETRACTED
8. GREEN DOT IS VISIBLE WHEN BOLT IS EXTENDED



QTY REQ'D	PART / IDENT NO.	DESCRIPTION	MATERIAL / SPECIFICATION	ITEM NO.
	-401	LATCH ASSY		
UNLESS OTHERWISE SPECIFIED: DIMENSIONS ARE IN INCHES		CONTRACT NO.		
TOLERANCES		DRAWN BY		
DECIMALS	ANGULAR	DATE		
.XX ± .03	° 0 30'	S. CSIK		
.XXX ± .010		CHECK		
DO NOT SCALE DRAWING		DESIGN		
NEXT ASSY	FINAL ASSY	S. CSIK		
USED ON		DESIGN ACTIVITY		
FINISH	ACT WT	CUSTOMER	SCALE	REV.
			NONE	A
		RELEASE DATE	8/1/90	SHEET 1 OF 1

SKYLOCK INDUSTRIES INCORPORATED
MONROVIA, CALIFORNIA, USA

LATCH ASSY

SIZE C FSCM NO. 51941 DRAWING NO. 20701 REV. A

SHEET 1 OF 1 REV: NC

DRAWING NO. 20701