

4

3

2

1

THE INFORMATION AND DESIGN HEREIN WAS ORIGINATED BY AND IS THE PROPERTY OF SKYLOCK INDUSTRIES INCORPORATED. SKYLOCK INDUSTRIES INCORPORATED RESERVES ALL PATENT, PROPRIETARY, DESIGN MANUFACTURING, REPRODUCTION, USE AND SALES RIGHTS THERE TO, AND TO ANY ARTICLE DISCLOSED THEREIN EXCEPT TO THE EXTENT RIGHTS ARE EXPRESSLY GRANTED TO OTHERS. THE FOREGOING DOES NOT APPLY TO VENDOR PROPRIETARY PARTS.

REVISIONS				
ZONE	LTR	DESCRIPTION	DATE	APPROVED
	D	SEE ECN C		

D

D

C

C

B

B

A

A

9. APPLICABLE TO FAA-PMA REPLACEMENT OR MODIFICATION PARTS ONLY. PER FAR 45.15, PARTS WILL BE IDENTIFIED WITH:
1. FAA-PMA.
 2. SKYLOCK IND. INC.
 3. PART NO.
 4. AIRCRAFT INSTALLATION ELIGIBILITY.

⊗ FUSION WELD PER MIL-STD-2219, CLASS C, OR EQUIV.

⊕ DIMS APPLY TO -403 AND -405 ONLY

⊖ DIMS APPLY TO -401 ONLY

⊙ THE FOLLOWING STATIC LOAD IS FOR REFERENCE USE ONLY. IT IS PROVIDED FOR CUSTOMER ENGINEERING TO DETERMINE THE GENERAL SUITABILITY OF THE PRODUCT FOR ITS INTENDED USE. ALTHOUGH SKYLOCK IS PROVIDING THE REFERENCE STATIC LOAD, THE CUSTOMER IS ULTIMATELY RESPONSIBLE FOR CERTIFICATION OF THE PRODUCT FOR ITS SPECIFIC APPLICATION. REFERENCE STATIC LOAD: 50 LBS. MAX. WITH NO PERMANENT DISTORTION.

4. HOOK SPRING LOAD CLOSED.


⊕ DECORATIVE FINISH REF.: SATIN BUFF DIRECTION SHOWN.

2. PROTECTIVE FINISH REF.: PASSIVATE PER AMS-QQ-P-35.

1. MAT'L REF.: CASE; 302/304 CRES PER ASTM-A-240 OR EQUIV. HANDLE; 303 CRES, PER AMS-5640N OR EQUIV.

NOTES: UNLESS OTHERWISE SPECIFIED

	-403	DOOR HOLD OPEN	
	-403	DOOR HOLD OPEN	
	-401	DOOR HOLD OPEN	
PART NO.	DESCRIPTION	MATERIAL	SIZE APPLICATION

PARTS LIST						
UNLESS OTHERWISE SPECIFIED	DRAWN BY T. SOUSA	3/28/78	 SKYLOCK INDUSTRIES INCORPORATED MONROVIA CALIFORNIA U. S. A.			
DIMENSIONS ARE IN INCHES	CHECKED					
TOLERANCES ON	ENGINEER					
DECIMALS ANGLES DRILLED HOLES	MFG					
.X ± .1 ± 0° 30' AND 10387	QC					
.XX ± .03			DOOR HOLD OPEN			
.XXX ± .010						
DO NOT SCALE THIS DRAWING						
MATERIAL - FINISH	USED ON	20265	SIZE	CODE IDENT. NO.	DRAWING NO.	REV.
			C	51941	20265	D
NEXT ASSY			SCALE	2: 1		VT.
				SHEET 1 OF 2		

4

3

2

1

THE INFORMATION AND DESIGN HEREIN WAS ORIGINATED BY AND IS THE PROPERTY OF SKYLOCK INDUSTRIES INCORPORATED. SKYLOCK INDUSTRIES INCORPORATED RESERVES ALL PATENT, PROPRIETARY, DESIGN MANUFACTURING, REPRODUCTION, USE AND SALES RIGHTS THERE TO, AND TO ANY ARTICLE DISCLOSED THEREIN EXCEPT TO THE EXTENT RIGHTS ARE EXPRESSLY GRANTED TO OTHERS. THE FOREGOING DOES NOT APPLY TO VENDOR PROPRIETARY PARTS.

REVISIONS				
ZONE	LTR	DESCRIPTION	DATE	APPROVED
		SEE SHT. 1 FOR NOTES		

D

C

B

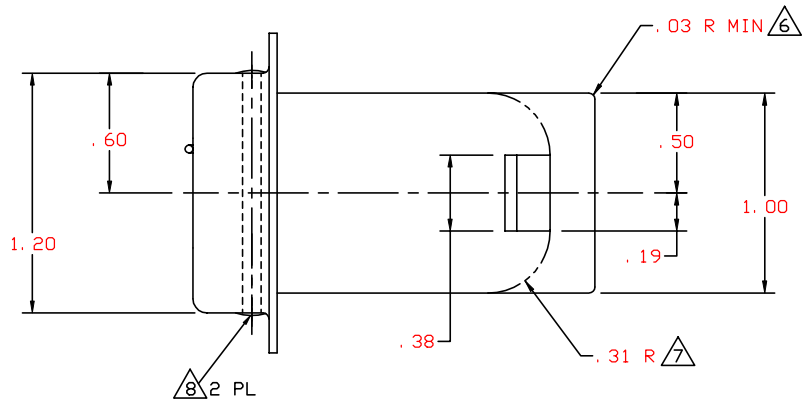
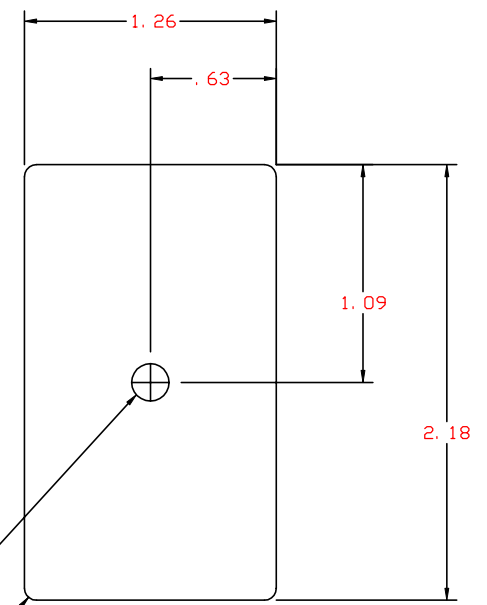
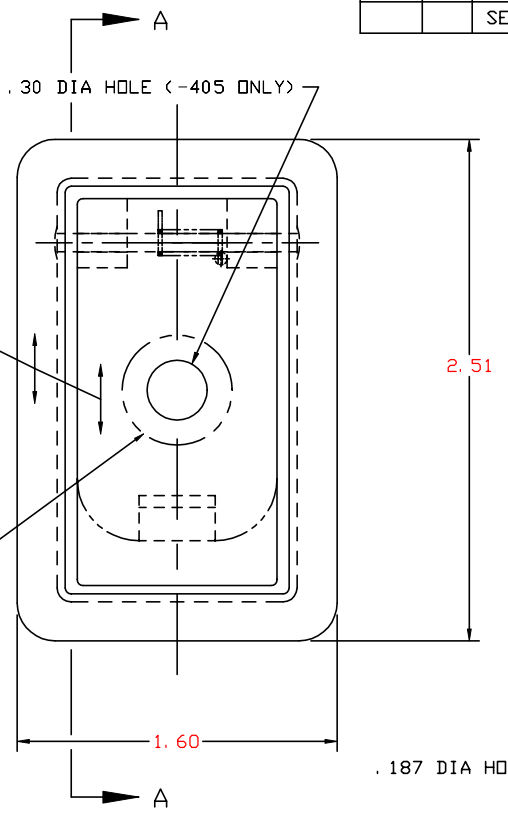
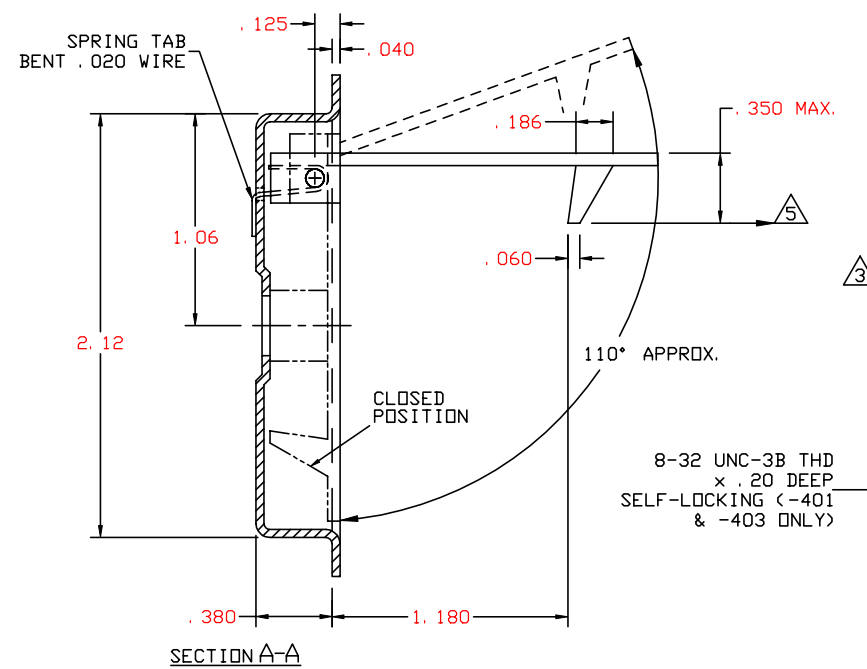
A

D

C


B

A



-401, -403, -405 DOOR HOLD OPEN

PANEL CUTOUT

 SKYLOCK INDUSTRIES INCORPORATED MONROVIA CALIFORNIA U. S. A.			
DOOR HOLD OPEN			
SIZE	CODE IDENT. NO.	DRAWING NO.	REV.
C	51941	20265	D
SCALE	2:1	VT.	SHEET 2 OF 2

4

3

2

1