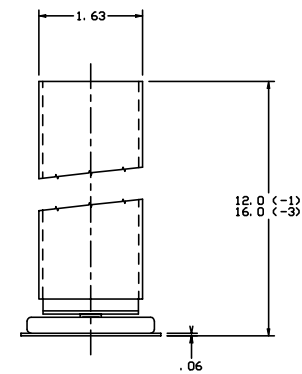
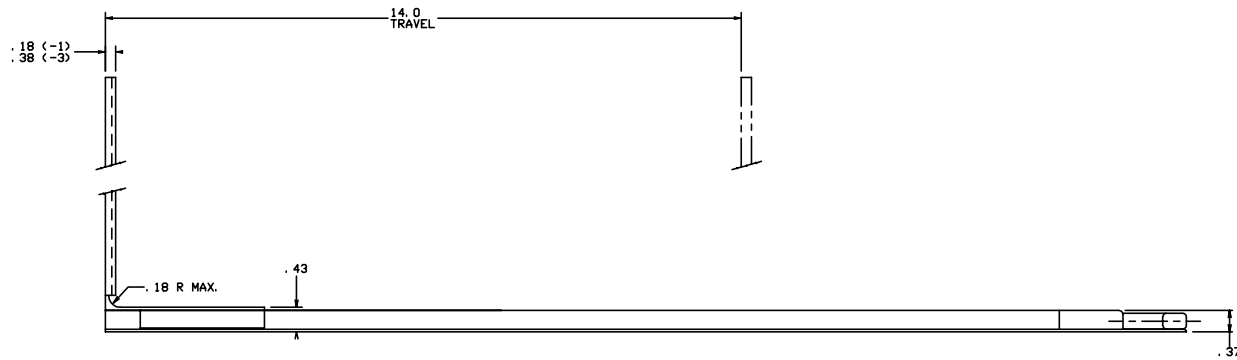
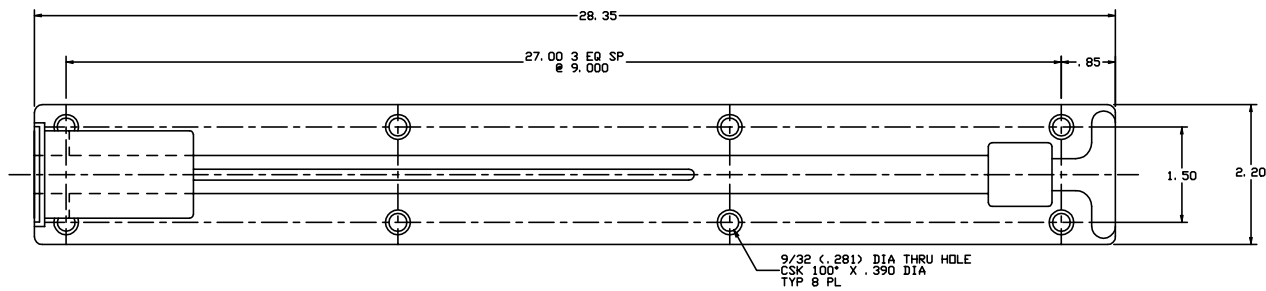


THE INFORMATION AND DESIGN HEREIN WAS OBTAINED BY AND IS THE PROPERTY OF SKYLARK INDUSTRIES INCORPORATED. SKYLARK INDUSTRIES INCORPORATED RESERVES ALL PATENT, PROPRIETARY, DESIGN MANUFACTURING INFORMATION, USE AND SALES RIGHTS THEREIN, AND TO ANY ARTICLES DEVELOPED THEREIN EXCEPT TO THE EXTENT RIGHTS ARE EXPRESSLY GRANTED TO OTHERS. THE FOLLOWING DOES NOT APPLY TO NON-PATENT RIGHTS.

NOTES: UNLESS OTHERWISE SPECIFIED.

1. REMOVE ALL BURRS AND BREAK SHARP EDGES.
2. REF. MAT'L: TRACK; ALUM ALLOY, HANDLE, PLUG, BRACKET RETAINERS; PLASTIC, CABLE; ST. STL. CABLE W/ NYLON JACKET.
3. REF. FINISH: ALUM.; CLEAR ANODIZE PER MIL-A-8625, TYPE II, CLASS I. ST. STL.; PASSIVATE PER QQ-P-35.
4. HANDLE AND BRACKET ARE SPRING LOADED TO THE RETRACTED POSITION.

REVISIONS				
ZONE	LTR	DESCRIPTION	DATE	APPROVED
	NC	PRODUCTION RELEASE	8-26-98	T. C.
	A	ADDED -3	10-2-98	T. C.



-3	EXTRACTOR			120961-3
-1	EXTRACTOR			120961-1
PART NO.	DESCRIPTION			MAKE FROM
PARTS LIST				
UNLESS OTHERWISE SPECIFIED		DRAWN BY	T. CSIK	9-11-98
DIMENSIONS ARE IN INCHES		CHECKED	E. WELSH	9-28-98
TOLERANCES ON		ENGINEER	T. CSIK	9-28-98
DECIMALS	ANGLES	DILLED HOLES		
.0001	± .01	± .0007		
DO NOT SCALE THIS DRAWING		MFG	B. KING	9-28-98
MATERIAL - FINISH		QC	J. VIVIRITO	9-28-98
NEXT ASSEMBLY		SIZE	D	CODE IDENT. NO.
MANUFACTURE IN ACCORDANCE WITH SKYLARK QUALITY CONTROL MANUAL 001.		SCALE	NONE	DRIVING NO.
		VT.		REV.
				A
				20961
				1 OF 1

SKYLARK INDUSTRIES INCORPORATED
RANCHO CALIFORNIA

EXTRACTOR