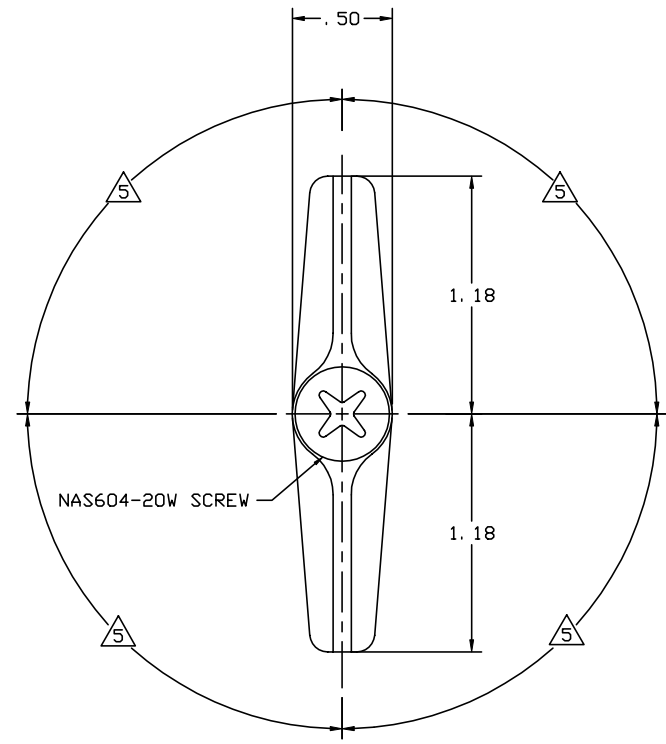
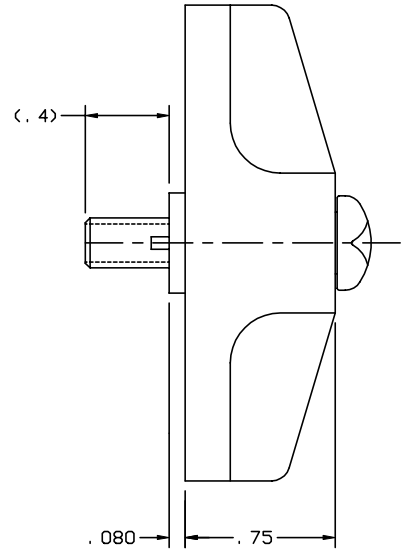
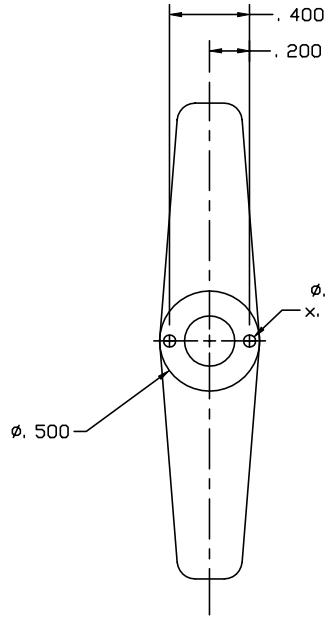


THE INFORMATION AND DESIGN HEREIN WAS ORIGINATED BY AND IS THE PROPERTY OF SKYLOCK INDUSTRIES INCORPORATED. SKYLOCK INDUSTRIES INCORPORATED RESERVES ALL PATENT, PROPRIETARY, DESIGN MANUFACTURING, REPRODUCTION, USE AND SALES RIGHTS THERE TO, AND TO ANY ARTICLE DISCLOSED THEREIN EXCEPT TO THE EXTENT RIGHTS ARE EXPRESSLY GRANTED TO OTHERS. THE FOREGOING DOES NOT APPLY TO VENDOR PROPRIETARY PARTS.

REVISIONS				
ZONE	LTR	DESCRIPTION	DATE	APPROVED
	B	SEE ECN B		



-401 RETAINER

6. APPLICABLE TO FAA-PMA REPLACEMENT OR MODIFICATION PARTS ONLY. PER FAR 45.15, PARTS WILL BE IDENTIFIED WITH:
1. FAA-PMA.
 2. SKYLOCK IND. INC.
 3. PART NO.
 4. AIRCRAFT INSTALLATION ELIGIBILITY.

S ROTATION: 360°; DETENT EVERY 90°

4. DECORATIVE FINISH REF.: TURN; BRIGHT POLISH, AND ANODIZE PER MIL-A-8625, TYPE II, CLASS 2, DYED CANDY APPLE RED.
3. FINISH REF.: CRES; PASSIVATE PER AMS-QQ-P-35, OR EQUIV.
2. MAT'L REF.: TURN; 7075-T6/T651 PER ASTM B-221 ALUM, CAM; 303 CRES, PER AMS-5640N OR EQUIV.
1. REMOVE ALL BURRS AND BREAK SHARP EDGES.

NOTES: UNLESS OTHERWISE SPECIFIED.

-401 RETAINER		120631-401	
PART NO.	DESCRIPTION	MATERIAL SIZE SPECIFICATION	MAKE FROM
PARTS LIST			
UNLESS OTHERWISE SPECIFIED	DRAWN BY SINGELAKIS	1/17/89	SKYLOCK INDUSTRIES INCORPORATED MONROVIA CALIFORNIA U. S. A.
DIMENSIONS ARE IN INCHES	CHECKED T. CSIK	9/10/99	
TOLERANCES ON	ENGINEER T. CSIK	9/10/99	
DECIMALS ANGLES DRILLED HOLES	MFG P. MATSUOKA	9/14/99	
.X ± .1 ± 0° 30' AND 10387 .XX ± .03 .XXX ± .010	QC J. VIVIRITO	9/15/99	
DO NOT SCALE THIS DRAWING			
MATERIAL - FINISH	USED ON	SIZE C	CODE IDENT. NO. 51941
NEXT ASSY			DRAWING NO. 20631
MANUFACTURE IN ACCORDANCE WITH SKYLOCK IND. INC., QUALITY CONTROL MANUAL QC.001		SCALE 4: 1	REV. B
		VT.	SHEET 1 OF 1

20631 RETAINER