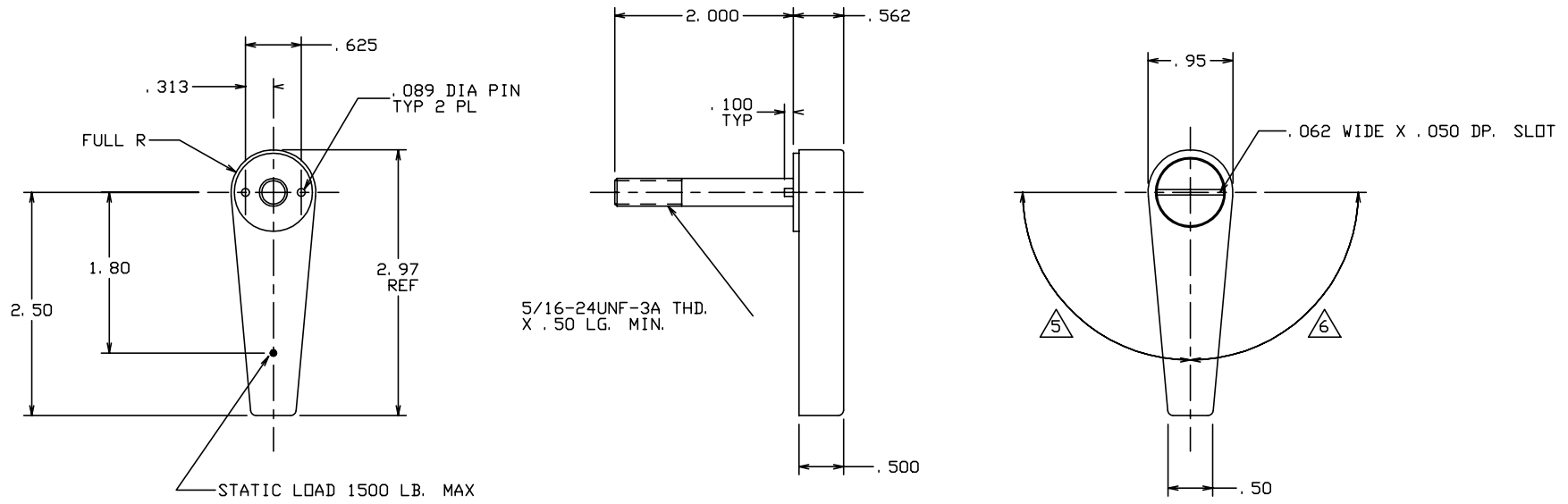


THE INFORMATION AND DESIGN HEREIN WAS ORIGINATED BY AND IS THE PROPERTY OF SKYLOCK INDUSTRIES INCORPORATED. SKYLOCK INDUSTRIES INCORPORATED RESERVES ALL PATENT, PROPRIETARY, DESIGN MANUFACTURING, REPRODUCTION, USE AND SALES RIGHTS THERE TO, AND TO ANY ARTICLE DISCLOSED THEREIN EXCEPT TO THE EXTENT RIGHTS ARE EXPRESSLY GRANTED TO OTHERS. THE FOREGOING DOES NOT APPLY TO VENDOR PROPRIETARY PARTS.

REVISIONS				
ZONE	LTR	DESCRIPTION	DATE	APPROVED
	NC	PRODUCTION RELEASE	2-2-93	T. CSIK
	A	NOTE 2 - REVISED MAT'L FOR TURN: WAS 7075-T651 ALUM ALLOY, FOR STUD: WAS 420 CRES, HEAT TREATED TO 260-280 K. S. I. NOTE 4 - REVISED FINISH: WAS BRIGHT POLISH AND CANDY APPLE RED ANODIZE. ON F/D ZN B4 LOAD WAS 1000 LB. MAX.	2-8-93	T. CSIK
	B	DIM. WAS: 5/16-24UNJF-3A THD. X .75 LG.	3-5-93	T. CSIK

- NOTES: UNLESS OTHERWISE SPECIFIED.
- REMOVE ALL BURRS AND BREAK SHARP EDGES.
  - MAT'L: TURN - 303 CRES BAR, STUD - 17-4PH CRES, HEAT TREATED TO COND. H-900. ALL OTHER COMPONENTS - CRES.
  - FINISH: CRES COMPONENTS - PASSIVATE PER QQ-P-35.
  - DECORATIVE FINISH: TURN - POWDER COAT CANDY APPLE.
- 5 90° LEFT HAND ROTATION, DETENTED EVERY 90°.
- 6 90° RIGHT HAND ROTATION, DETENTED EVERY 90°.



	-2	1/4 TURN RETAINER	6		
	-1	1/4 TURN RETAINER	5		
PART NO.	DESCRIPTION		MATERIAL	SIZE SPECIFICATION	ITEM NO.
PARTS LIST					
UNLESS OTHERWISE SPECIFIED		DRAWN BY	T. CSIK	2-2-93	SKYLOCK INDUSTRIES INCORPORATED MONROVIA CALIFORNIA U. S. A.
DIMENSIONS ARE IN INCHES		CHECKED	S. C.	2-2-93	
TOLERANCES ON		ENGINEER			
DECIMALS ANGLES DRILLED HOLES		PROJECT			
.X ± .1 ± 0° 30' AND 10387		APPROVAL	T. CSIK	2-2-93	1/4 TURN RETAINER
.XX ± .03		APPROVAL			
.XXX ± .010		APPROVAL			
DO NOT SCALE THIS DRAWING					
MATERIAL - FINISH		USED ON	SIZE	CODE IDENT. NO.	DRAWING NO.
NEXT ASSY			C	51941	20807
FINAL ASSY			SCALE	1: 1	VT. SHEET 1 OF 1

Pg. 7  
30807 B