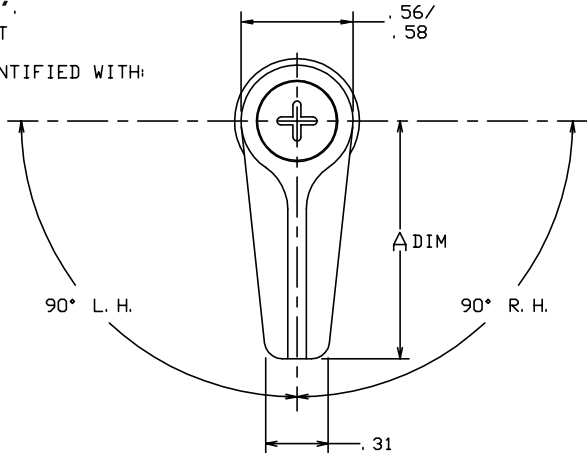


THE INFORMATION AND DESIGN HEREIN WAS ORIGINATED BY AND IS THE PROPERTY OF SKYLOCK INDUSTRIES INCORPORATED. SKYLOCK INDUSTRIES INCORPORATED RESERVES ALL PATENT, PROPRIETARY, DESIGN MANUFACTURING, REPRODUCTION, USE AND SALES RIGHTS THERE TO, AND TO ANY ARTICLE DISCLOSED THEREIN EXCEPT TO THE EXTENT RIGHTS ARE EXPRESSLY GRANTED TO OTHERS. THE FOREGOING DOES NOT APPLY TO VENDOR PROPRIETARY PARTS.

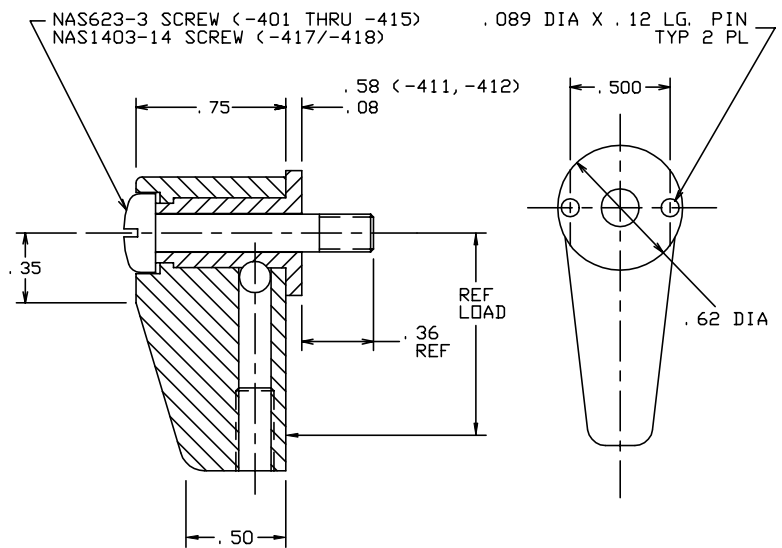
NOTES: UNLESS OTHERWISE SPECIFIED.

- REMOVE ALL BURRS AND BREAK SHARP EDGES.
- MAT'L: RETAINER; 7075-T6/T651 PER ASTM B-221, OR EQUIV. ALL OTHER PARTS; 303 OR 304 CRES, COND. A, PER AMS-5649N (303), AMS-5639E (304), OR EQUIV.
- FINISH: ALUM.; ANODIZE PER MIL-A-8625, OR EQUIV. ALL OTHER PARTS PASSIVATE PER AMS-QQ-P-35, TYPE II (303), TYPE VI, VII (304). OR EQUIV.
- DECORATIVE FINISH: RETAINER; BRIGHT POLISH, AND ANODIZE PER MIL-A-8625, TYPE II, CLASS 2, DYED CANDY APPLE RED.
- THE FOLLOWING STATIC LOAD IS FOR REFERENCE USE ONLY. IT IS PROVIDED FOR CUSTOMER ENGINEERING TO DETERMINE THE GENERAL SUITABILITY OF THE PRODUCT FOR ITS INTENDED USE. ALTHOUGH SKYLOCK IS PROVIDING THE REFERENCE STATIC LOAD, THE CUSTOMER IS ULTIMATELY RESPONSIBLE FOR CERTIFICATION OF THE PRODUCT FOR ITS SPECIFIC APPLICATION. REFERENCE STATIC LOAD: 1000 LBS. MAX. @ .62" 770 LBS. MAX. @ 1.00" 575 LBS. MAX. @ 1.25"
- APPLICABLE TO FAA-PMA REPLACEMENT OR MODIFICATION PARTS ONLY. PER FAR 45.15, PARTS WILL BE IDENTIFIED WITH:
 - FAA-PMA.
 - SKYLOCK IND. INC.
 - PART NO.
 - AIRCRAFT INSTALLATION ELIGIBILITY.

REVISIONS				
ZONE	LTR	DESCRIPTION	DATE	APPROVED
	E	NOTE IS NAS623-3 SCREW, WAS NAS623-3-13W SCREW	11-24-93	T. CSIK
	F	ADDED -415	11-16-94	T. CSIK
	G	ADDED -417/-418	3-31-97	T. CSIK
	H	UPDATED NOTE 5	7-10-97	T. CSIK
	J	SEE ECN J		



-401 THRU -418 RETAINER



.90	-410	RETAINER	<90° RIGHT HAND>	120765-410
.90	-409	RETAINER	<90° LEFT HAND>	120765-409
2.00	-407	RETAINER	<180° ROTATION>	120765-407
2.00	-406	RETAINER	<90° RIGHT HAND>	120765-406
2.00	-405	RETAINER	<90° LEFT HAND>	120765-405
1.75	-404	RETAINER	<90° RIGHT HAND>	120765-404
1.75	-403	RETAINER	<90° LEFT HAND>	120765-403
1.19	-402	RETAINER	<90° RIGHT HAND>	120765-402
1.19	-401	RETAINER	<90° LEFT HAND>	120765-401

A DIM	PART NO.	DESCRIPTION	MATERIAL	SIZE	SPECIFICATION	MAKE FROM
PARTS LIST						
UNLESS OTHERWISE SPECIFIED			DRAWN BY T. CSIK		3-30-98	
DIMENSIONS ARE IN INCHES			CHECKED T. CSIK		8/18/99	
TOLERANCES ON			ENGINEER T. CSIK		8/18/99	
DECIMALS ANGLES DRILLED HOLES			MFG P. MATSUOKA		8/19/99	
.X ± .01 ± 0° 30' AND 10387			QC J. VIVIRITO		8/18/99	
.XXX ± .010			DO NOT SCALE THIS DRAWING			
MATERIAL - FINISH			USED ON		SIZE CODE IDENT. NO. DRAWING NO. REV.	
NEXT ASSY					C 51941 20765 J	
MANUFACTURE IN ACCORDANCE WITH SKYLOCK IND. INC., QUALITY CONTROL MANUAL QC.001			SCALE 2:1		VT. SHEET 1 OF 1	

2.00	-418	RETAINER	<90° RIGHT HAND>
2.00	-417	RETAINER	<90° LEFT HAND>
2.50	-415	RETAINER	<180° ROTATION>
1.50	-413	RETAINER	<180° ROTATION>
2.00	-412	RETAINER	<90° RIGHT HAND>
2.00	-411	RETAINER	<90° LEFT HAND>
A DIM	PART NO.	DESCRIPTION	MATERIAL SIZE SPECIFICATION

SKYLOCK INDUSTRIES INCORPORATED
MONROVIA CALIFORNIA U. S. A.

20765 RETAINER