

THE INFORMATION AND DESIGN HEREIN WAS ORIGINATED BY AND IS THE PROPERTY OF SKYLOCK INDUSTRIES INCORPORATED. SKYLOCK INDUSTRIES INCORPORATED RESERVES ALL PATENT, PROPRIETARY, DESIGN MANUFACTURING, REPRODUCTION, USE AND SALES RIGHTS THERE TO, AND TO ANY ARTICLE DISCLOSED THEREIN EXCEPT TO THE EXTENT RIGHTS ARE EXPRESSLY GRANTED TO OTHERS. THE FOREGOING DOES NOT APPLY TO VENDOR PROPRIETARY PARTS.

NOTES: UNLESS OTHERWISE SPECIFIED.

1. MAT'L REF: HANDLE; 6061-T6/T651 PER ASTM B-221 ALUM. ALLOY, OR EQUIV, ALL OTHER COMPS; 302/304 CRES, COND. A, PER ASTM-A240, OR EQUIV.

2. FINISH REF: CRES; PASSIVATE PER AMS-QQ-P-35, TYPE VI & VII.

3. DECORATIVE FINISH REF: SATIN BRUSH IN DIRECTION NOTED.

4. REMOVED

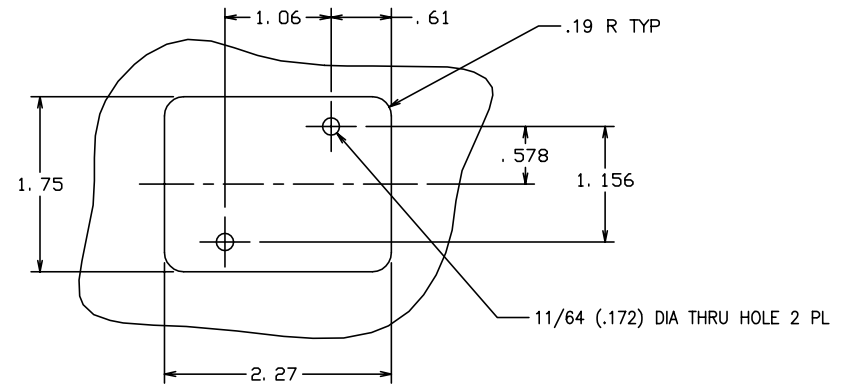
5. BOLT IS SPRING LOADED AND ALWAYS FREE TO LATCH.

6. BOLT IS DETENTED IN BOTH EXTENDED AND RETRACTED POSITIONS.

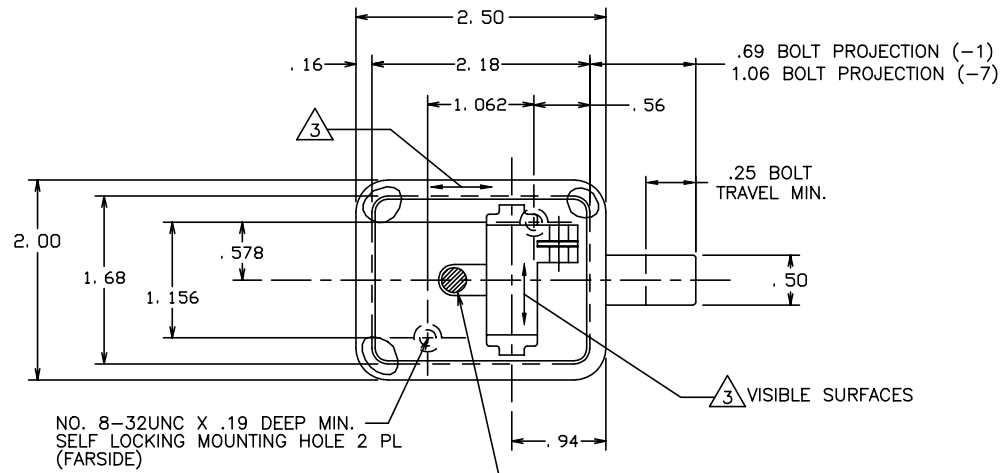
7. PER FAR 45.15, PARTS WILL BE IDENTIFIED WITH:

1. FAA-PMA
2. SKYLOCK IND. INC.
3. PART NO.
4. AIRCRAFT ELIGIBILITY.

REVISIONS				
ZONE	LTR	DESCRIPTION	DATE	APPROVED
	NC	PRODUCTION RELEASE	6-7-73	FOSTER
	A	ADDED -3	10-28-91	T.C.
	B	ADDED -5	1-29-92	T.C.
	C	REDRAWN ON CADAM, ADDED -7	4-17-96	T.C.
	D	SEE ECN D	3-31-99	T.C.

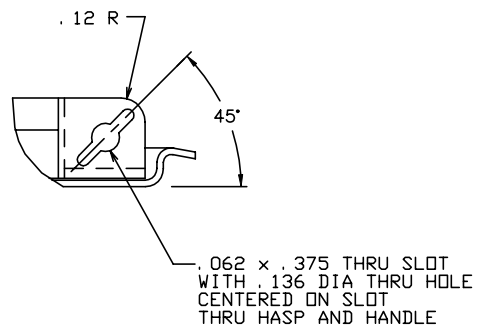
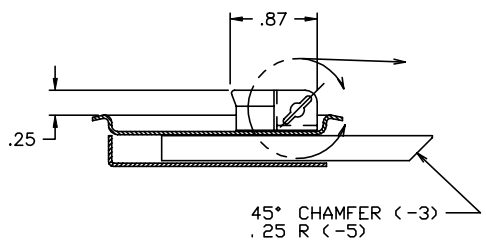
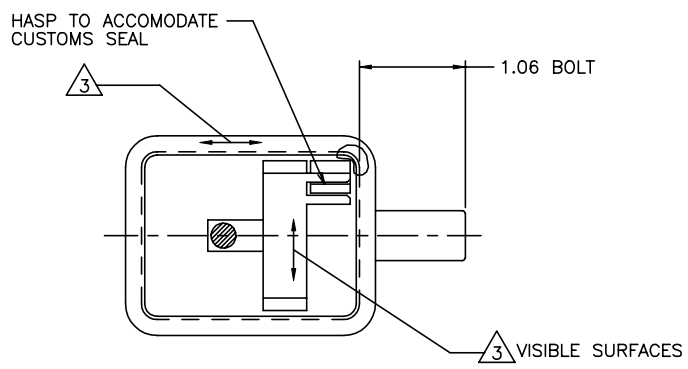


DOOR CUTOUT INFORMATION



THE INFORMATION AND DESIGN HEREIN WAS ORIGINATED BY AND IS THE PROPERTY OF SKYLOCK INDUSTRIES INCORPORATED. SKYLOCK INDUSTRIES INCORPORATED RESERVES ALL PATENT, PROPRIETARY, DESIGN MANUFACTURING, REPRODUCTION, USE AND SALES RIGHTS THERE TO, AND TO ANY ARTICLE DISCLOSED THEREIN EXCEPT TO THE EXTENT RIGHTS ARE EXPRESSLY GRANTED TO OTHERS. THE FOREGOING DOES NOT APPLY TO VENDOR PROPRIETARY PARTS.

REVISIONS				
ZONE	LTR	DESCRIPTION	DATE	APPROVED
		SEE SHT. 1 FOR NOTES		



-3 LATCH ASSY  
 (S/A -1 EXCEPT AS SHOWN)  
-5 LATCH ASSY  
 (S/A -3 EXCEPT DEADBOLT)

SKYLOCK INDUSTRIES INCORPORATED  
 MONROVIA CALIFORNIA U. S. A.

LATCH ASSY

SIZE	CODE IDENT. NO.	DRAWING NO.	REV.
C	51941	20094	D
SCALE	1: 1	VT.	SHEET 2 OF 2