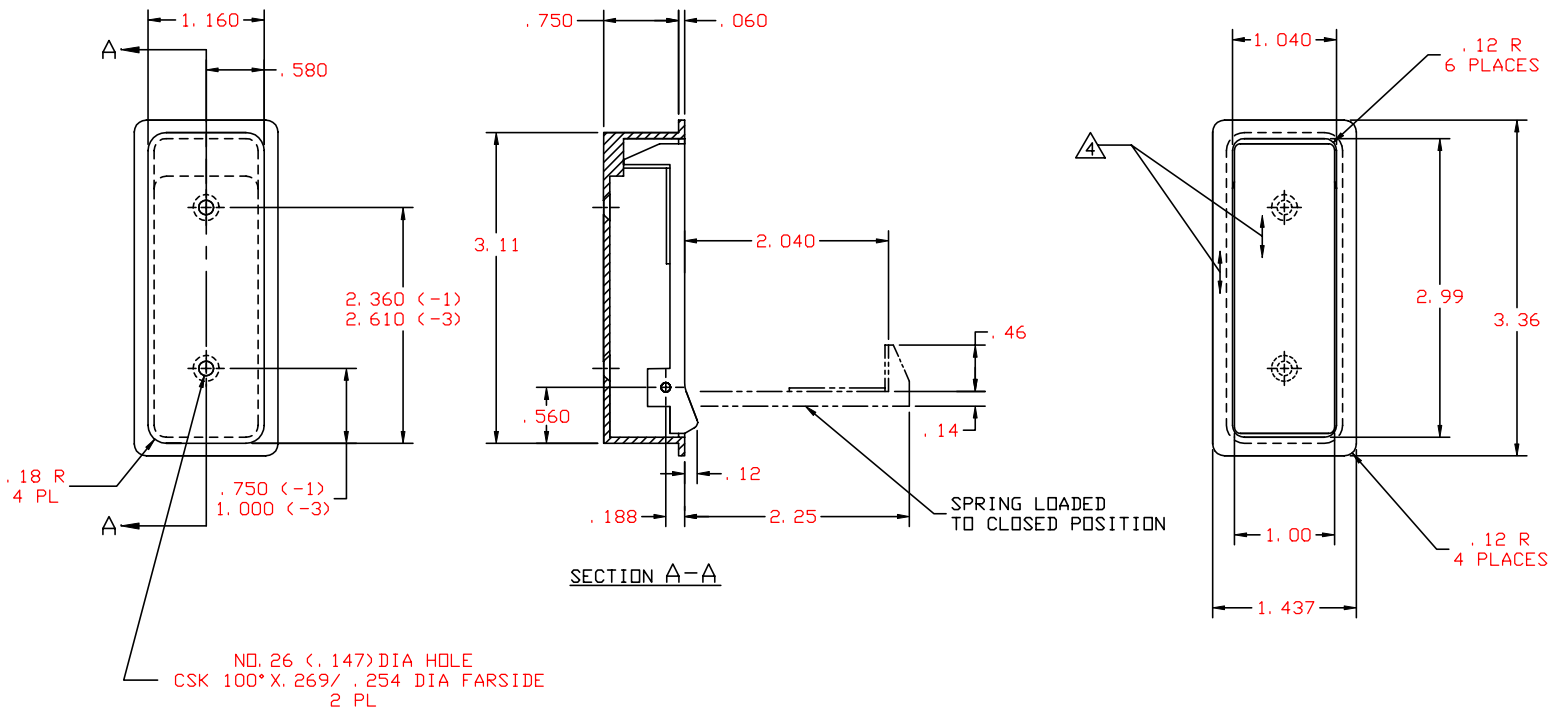


THE INFORMATION AND DESIGN HEREIN WAS ORIGINATED BY AND IS THE PROPERTY OF SKYLOCK INDUSTRIES INCORPORATED. SKYLOCK INDUSTRIES INCORPORATED RESERVES ALL PATENT, PROPRIETARY, DESIGN MANUFACTURING, REPRODUCTION, USE AND SALES RIGHTS THERE TO, AND TO ANY ARTICLE DISCLOSED THEREIN EXCEPT TO THE EXTENT RIGHTS ARE EXPRESSLY GRANTED TO OTHERS. THE FOREGOING DOES NOT APPLY TO VENDOR PROPRIETARY PARTS.

REVISIONS				
ZONE	LTR	DESCRIPTION	DATE	APPROVED
	NC	PRODUCTION RELEASE	10/15/98	TC
	A	SEE ECN A	4/12/99	TC



5. PER FAR 45.15. PARTS WILL BE IDENTIFIED WITH:
1. FAA-PMA.
 2. SKYLOCK IND. INC.
 3. PART NO.
 4. AIRCRAFT ELIGIBILITY.

△ REFERENCE DECORATIVE FINISH: SATIN BRUSH IN DIRECTION SHOWN.

3. REFERENCE FINISH: ALUM PARTS; CLEAR ANODIZE PER MIL-A-8625, TYPE II, CLASS 1. CRES PARTS; PASSIVATE. PER AMS-QQ-P-35.

2. REFERENCE MAT'L: CASE AND HOOK; 6061-T6/T651 ALUM BAR. PIN AND SPRING; CRES. PAD; NATURAL CORK/RUBBER

1. REMOVE ALL BURRS AND SHARP CORNERS.

NOTES: UNLESS OTHERWISE SPECIFIED.

		-3	DOOR STOP		120393-3
		-1	DOOR STOP		120393-1
QTY REQD	PART NO.	DESCRIPTION		MATERIAL OR NOTE	MAKE FROM
PARTS LIST					
UNLESS OTHERWISE SPECIFIED		DRAWN BY	M. F.	12/7/82	SKYLOCK INDUSTRIES INCORPORATED MONROVIA CALIFORNIA U. S. A.
DIMENSIONS ARE IN INCHES		CHECKED	T. CSIK	10/15/98	
TOLERANCES ON		ENGINEER	T. CSIK	10/15/98	
DECIMALS ANGLES DRILLED HOLES		MFG	P. MATSUOKA	10/16/98	
		QC	J. VIVIRITO	10/26/98	
SURFACE ROUGHNESS ✓					
DO NOT SCALE THIS DRAWING		USED ON		SIZE	CODE IDENT. NO. DRAWING NO. REV.
MATERIAL - FINISH				C	51941 20393 A
MANUFACTURE IN ACCORDANCE WITH SKYLOCK QUALITY CONTROL MANUAL QC. 001				SCALE	1: 1
				VT.	SHEET 1 OF 1

DOOR HOLD OPEN