

THE INFORMATION AND DESIGN HEREIN WAS ORIGINATED BY AND IS THE PROPERTY OF SKYLOCK INDUSTRIES INCORPORATED. SKYLOCK INDUSTRIES INCORPORATED RESERVES ALL PATENT, PROPRIETARY, DESIGN MANUFACTURING, REPRODUCTION, USE AND SALES RIGHTS THERE TO, AND TO ANY ARTICLE DISCLOSED THEREIN EXCEPT TO THE EXTENT RIGHTS ARE EXPRESSLY GRANTED TO OTHERS. THE FOREGOING DOES NOT APPLY TO VENDOR PROPRIETARY PARTS.

REVISIONS				
ZONE	LTR	DESCRIPTION	DATE	APPROVED
	W	SEE ECN W	1/13/99	T. CSIK
	X	SEE ECN X		

NOTES: UNLESS OTHERWISE SPECIFIED.

- REMOVE ALL BURRS AND BREAK SHARP EDGES.
- MAT'L REF.: TURN; 2024-T4/T351 OR 7075-T6/T651 PER ASTM B-209, OR EQUIV. BASE; 303 CRES, COND. A, PER 5640N, OR EQUIV. STUD; 17-4PH CRES, COND. A, PER AMS-5643, OR EQUIV.

- FINISH REF.: CRES; SATIN BRUSH AND PASSIVATE PER AMS-QQ-P-35, TYPE II, OR EQUIV.

- DECORATIVE FINISH REF.: BRIGHT BUFF AND ANODIZE PER MIL-A-8625, TYPE II, CLASS 2, DYED CANDY APPLE RED, OR EQUIV.

- DECORATIVE FINISH REF.: SATIN BRUSH AND CLEAR ANODIZE PER MIL-A-8625 TYPE II, CLASS 1, OR EQUIV.

- ROTATION: 360°; DETENTED EVERY 90°.

- ROTATION: 180°; DETENTED EVERY 90°.

- ROTATION: 90° RIGHT HAND.

- ROTATION; 90° LEFT HAND.

- THE FOLLOWING STATIC LOAD IS FOR REFERENCE USE ONLY. IT IS PROVIDED FOR CUSTOMER ENGINEERING TO DETERMINE THE GENERAL SUITABILITY OF THE PRODUCT FOR ITS INTENDED USE. ALTHOUGH SKYLOCK IS PROVIDING THE REFERENCE STATIC LOAD, THE CUSTOMER IS ULTIMATELY RESPONSIBLE FOR CERTIFICATION OF THE PRODUCT FOR ITS SPECIFIC APPLICATION. REFERENCE STATIC LOAD: 1935 LBS. MAX. (-1 TO -9, -19 TO -27, -47, -49, -63 TO -67, -75 TO -95, -103 TO -109, -117, -119, -125, -127) 1200 LBS. MAX. (-11 TO -17, -29 TO -35, -97 TO -101, -113, 115, -121, -123) 900 LBS. MAX. (-37, -41) 4000 LBS. MAX. (-39, -43, -45, -51 TO -61, -69 TO -73, -111)

- REMOVED.

- REMOVED.

- REMOVED.

- REMOVED.

- SHAFT NEEDS NO TORQUE ADJUSTMENT; TIGHTEN SHAFT AS MUCH AS POSSIBLE WHEN INSTALLING RETAINER.

- ALL RETAINERS HAVE THREADS COATED WITH VC-3 (VISCIDUS COATING VIBRATITE).

- ROTATION: 180°, DETENTED EVERY 45°.

- ROTATION: 90° RIGHT HAND, DETENTED EVERY 45°.


- ROTATION: 90° LEFT HAND, DETENTED EVERY 45°.

- DECORATIVE FINISH REF.: GLASS BEAD PEEN HEAD OF STUD ONLY- USING #70-140 GLASS BEAD MEDIA AT 50-60 PSI.

- APPLICABLE TO FAA-PMA REPLACEMENT OR MODIFICATION PARTS ONLY. PER FAR 45.15, PARTS WILL BE IDENTIFIED WITH:

- FAA-PMA.
- SKYLOCK IND. INC.
- PART NO.
- AIRCRAFT INSTALLATION ELIGIBILITY.

E DIM	D DIM	C DIM	A DIM	Q DIM	PART NO.	DESCRIPTION	MATERIAL	SIZE	SPECIFICATION	MAKE FROM
.250	.100	2.74	1.24	2.12	-61	RETAINER	5	9		120670-61
.250	.100	2.74	1.24	2.12	-59	RETAINER	5	8		120670-59
.250	.100	2.74	1.24	2.12	-57	RETAINER	5	7		120670-57
.250	.100	3.50	1.24	2.88	-55	RETAINER	4	7		120670-55
.250	.100	5.12	.74 MAX	4.50	-53	RETAINER	4	7		120670-53
.250	.100	2.365	.74 MAX	1.74	-51	RETAINER	4	7		120670-51
.250	.100	5.12	2.00	4.50	-49	RETAINER	4	9		120670-49
.250	.100	5.12	2.00	4.50	-47	RETAINER	4	8		120670-47
.250	.100	2.74	2.00	2.12	-45	RETAINER	4	8		120670-45
.250	.100	2.74	2.00	2.12	-43	RETAINER	4	9		120670-43
.250	.100	9.42	1.24	8.80	-41	RETAINER	4	7		120670-41
.250	.100	2.74	1.24	2.12	-39	RETAINER	4	7		120670-39
.250	.100	8.12	1.24	7.50	-37	RETAINER	4	7		120670-37
.250	.100	6.62	1.24	6.00	-35	RETAINER	5	9		120670-35
.250	.100	6.62	1.24	6.00	-33	RETAINER	5	8		120670-33
.250	.100	6.62	1.24	6.00	-31	RETAINER	5	7		120670-31
.250	.100	6.62	1.24	6.00	-29	RETAINER	5	6		120670-29
.250	.100	5.12	.74 MAX	4.50	-27	RETAINER	5	6		120670-27
.250	.100	5.12	1.24	4.50	-25	RETAINER	5	9		120670-25
.250	.100	5.12	1.24	4.50	-23	RETAINER	5	8		120670-23
.250	.100	5.12	1.24	4.50	-21	RETAINER	5	7		120670-21
.250	.100	5.12	1.24	4.50	-19	RETAINER	5	6		120670-19
.250	.100	6.62	1.24	6.00	-17	RETAINER	5	9		120670-17
.250	.100	7.25	1.24	6.62	-15	RETAINER	4	8		120670-15
.250	.100	6.62	1.24	6.00	-13	RETAINER	4	7		120670-13
.250	.100	6.62	1.24	6.00	-11	RETAINER	4	6		120670-11
.250	.100	5.12	.74 MAX	4.50	-9	RETAINER	4	6		120670-9
.250	.100	5.12	1.24	4.50	-7	RETAINER	4	9		120670-7
.250	.100	5.12	1.24	4.50	-5	RETAINER	4	8		120670-5
.250	.100	5.12	1.24	4.50	-3	RETAINER	4	7		120670-3
.250	.100	5.12	1.24	4.50	-1	RETAINER	4	6		120670-1

PARTS LIST		UNLESS OTHERWISE SPECIFIED		DRAWN BY T. CSIK 6-14-91		 SKYLOCK INDUSTRIES INCORPORATED MONROVIA CALIFORNIA U. S. A.
DIMENSIONS ARE IN INCHES		TOLERANCES ON		CHECKED DEAN VO 1/13/99		
DECIMALS ANGLES DRILLED HOLES		ENGINEER T. CSIK 1/13/99		MFG P. MATSUOKA 1/22/99		
.X ± .1 ± 0° 30' AND 10387		QC J. VIVIRITO 2/2/99				
DO NOT SCALE THIS DRAWING		MATERIAL - FINISH		USED ON		SIZE C
NEXT ASSY		MANUFACTURE IN ACCORDANCE WITH SKYLOCK IND. INC., QUALITY CONTROL MANUAL QC 001		SCALE NONE		CODE IDENT. NO. 51941
				SHEET 1 OF 3		DRAWING NO. 20670
						REV. X

20670 RETAINER

4

3

2

1

THE INFORMATION AND DESIGN HEREIN WAS ORIGINATED BY AND IS THE PROPERTY OF SKYLOCK INDUSTRIES INCORPORATED. SKYLOCK INDUSTRIES INCORPORATED RESERVES ALL PATENT, PROPRIETARY, DESIGN MANUFACTURING, REPRODUCTION, USE AND SALES RIGHTS THERE TO, AND TO ANY ARTICLE DISCLOSED THEREIN EXCEPT TO THE EXTENT RIGHTS ARE EXPRESSLY GRANTED TO OTHERS. THE FOREGOING DOES NOT APPLY TO VENDOR PROPRIETARY PARTS.

REVISIONS				
ZONE	LTR	DESCRIPTION	DATE	APPROVED
		SEE SHEET 1 FOR NOTES		

D

C

B

A

E DIM	D DIM	C DIM	A DIM	C DIM	PART NO.	DESCRIPTION	MATERIAL	SIZE	SPECIFICATION	MAKE FROM
.312	.100	5.12	2.00	4.50	-127	RETAINER	5	8	20	120670-127
.312	.100	5.12	2.00	4.50	-125	RETAINER	5	9	20	120670-125
.250	.100	8.75	2.00	8.12	-123	RETAINER	4	19		120670-123
.250	.100	8.75	2.00	8.12	-121	RETAINER	4	18		120670-121
.250	.100	5.12	1.24	4.50	-119	RETAINER	4	9		120670-119
.250	.100	5.12	1.24	4.50	-117	RETAINER	4	8		120670-117
.250	.100	8.12	2.00	7.50	-115	RETAINER	4	19		120670-115
.250	.100	7.25	2.00	6.62	-113	RETAINER	4	18		120670-113
.250	.100	2.74	2.00	2.12	-111	RETAINER	4	18		120670-111
.440	.050	5.12	1.18	4.50	-109	RETAINER	4	19		120670-109
.440	.050	5.12	1.18	4.50	-107	RETAINER	4	18		120670-107
.375	.050	5.12	1.18	4.50	-105	RETAINER	4	19		120670-105
.375	.050	5.12	1.18	4.50	-103	RETAINER	4	18		120670-103
.250	.100	8.12	2.00	7.50	-101	RETAINER	4	18		120670-101
.250	.100	7.25	2.00	6.62	-99	RETAINER	4	19		120670-99
.250	.100	8.12	1.24	7.50	-97	RETAINER	4	9		120670-97
.250	.100	4.00	1.24	3.38	-95	RETAINER	4	19		120670-95
.250	.100	4.00	1.24	3.38	-93	RETAINER	4	18		120670-93
.250	.050	5.12	1.24	4.50	-91	RETAINER	4	9		120670-91
.250	.050	5.12	1.24	4.50	-89	RETAINER	4	8		120670-89
.312	.050	5.12	1.18	4.50	-87	RETAINER	4	19		120670-87
.312	.050	5.12	1.18	4.50	-85	RETAINER	4	18		120670-85
.250	.100	5.12	.74 MAX.	4.50	-83	RETAINER	4	8		120670-83
.250	.100	5.12	.74 MAX.	4.50	-81	RETAINER	4	9		120670-81
.250	.100	5.12	2.00	4.50	-79	RETAINER	5	8	20	120670-79
.250	.100	5.12	2.00	4.50	-77	RETAINER	5	9	20	120670-77
.250	.100	3.12	1.24	2.50	-75	RETAINER	4	8		120670-75
.250	.100	2.74	.76 MAX.	2.12	-73	RETAINER	4	7		120670-73
.250	.100	2.74	1.24	2.12	-71	RETAINER	4	8		120670-71
.250	.100	2.74	1.24	2.12	-69	RETAINER	4	9		120670-69
.250	.050	5.12	1.24	4.50	-67	RETAINER	4	17		120670-67
.250	.100	3.12	1.24	2.50	-65	RETAINER	4	9		120670-65
.250	.100	8.62	.74 MAX.	8.00	-63	RETAINER	4	7		120670-63

PARTS LIST

 SKYLOCK INDUSTRIES INCORPORATED
MONROVIA CALIFORNIA U. S. A.

20670 RETAINER

SIZE	CODE IDENT. NO.	DRAWING NO.	REV.
C	51941	20670	X
SCALE	NONE	VT.	SHEET 2 OF 3

4

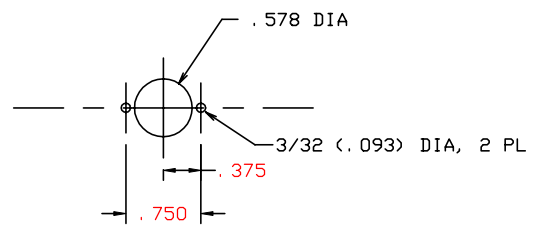
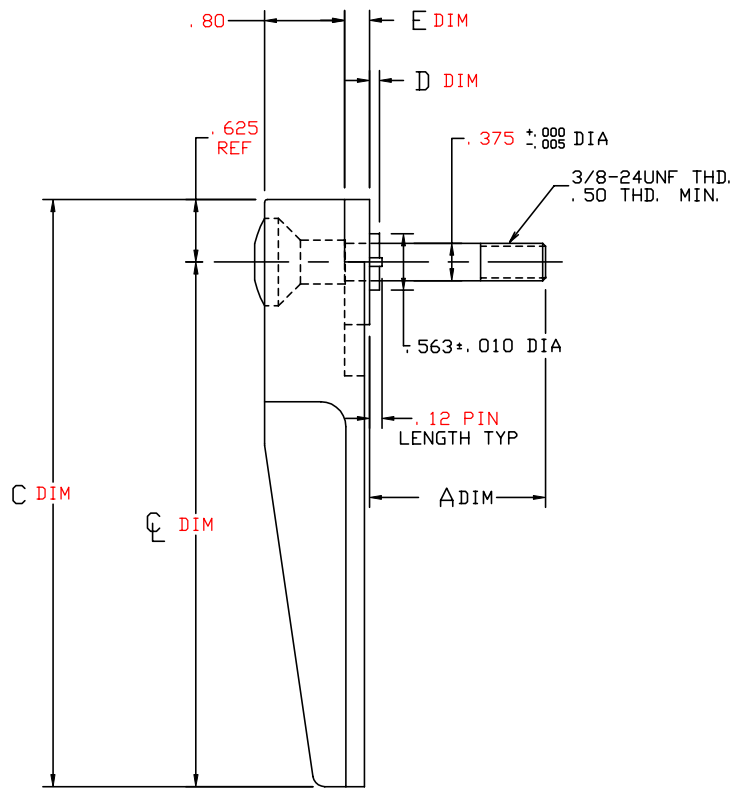
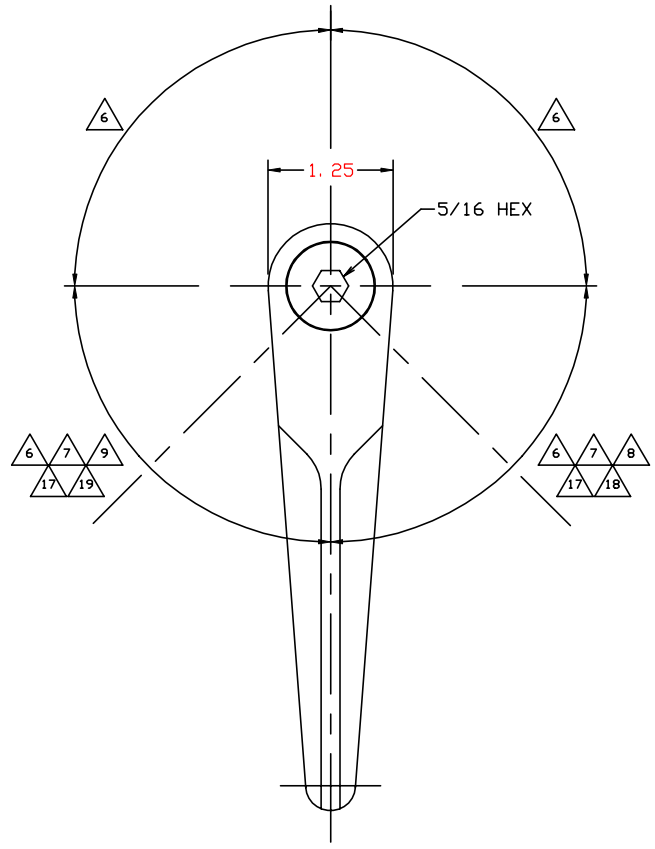
3

2

1

THE INFORMATION AND DESIGN HEREIN WAS ORIGINATED BY AND IS THE PROPERTY OF SKYLOCK INDUSTRIES INCORPORATED. SKYLOCK INDUSTRIES INCORPORATED RESERVES ALL PATENT, PROPRIETARY, DESIGN MANUFACTURING, REPRODUCTION, USE AND SALES RIGHTS THERE TO, AND TO ANY ARTICLE DISCLOSED THEREIN EXCEPT TO THE EXTENT RIGHTS ARE EXPRESSLY GRANTED TO OTHERS. THE FOREGOING DOES NOT APPLY TO VENDOR PROPRIETARY PARTS.

REVISIONS				
ZONE	LTR	DESCRIPTION	DATE	APPROVED
		SEE SHEET 1 FOR NOTES		



SUGGESTED PANEL CUTOUT

TYPICAL RETAINER

SKYLOCK INDUSTRIES INCORPORATED
MONROVIA CALIFORNIA U. S. A.

20670 RETAINER

SIZE	CODE IDENT. NO.	DRAWING NO.	REV.
C	51941	20670	X
SCALE	NONE	WT.	SHEET 3 OF 3