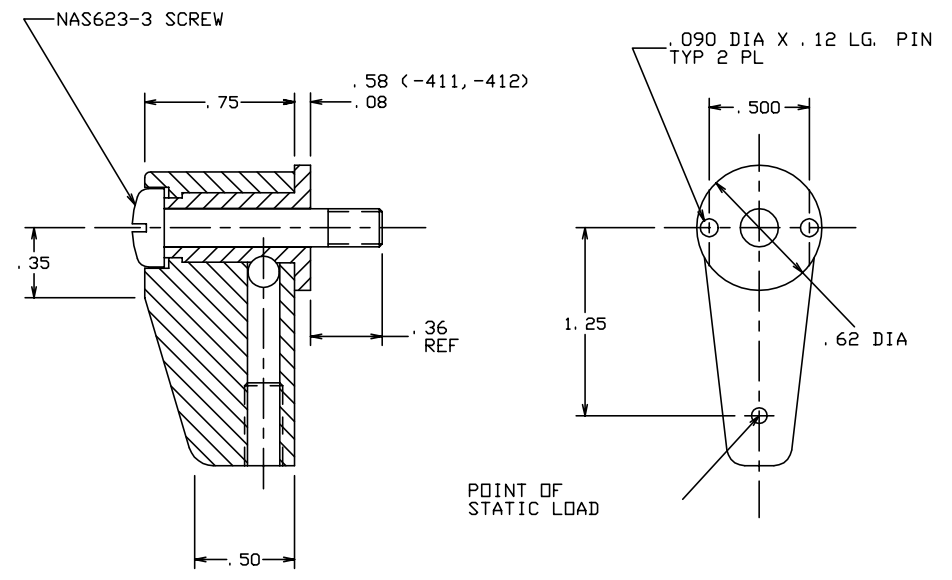
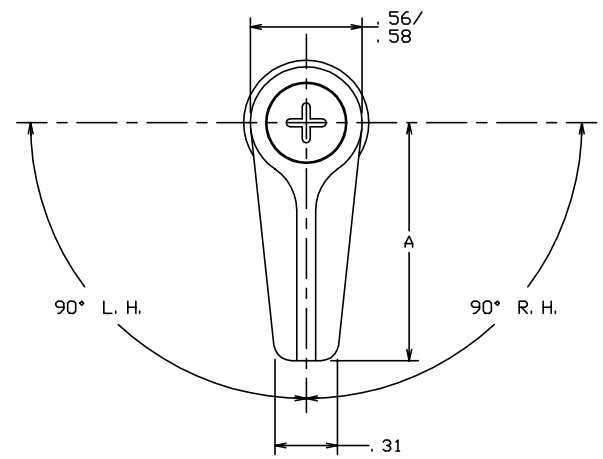


THE INFORMATION AND DESIGN HEREIN WAS ORIGINATED BY AND IS THE PROPERTY OF SKYLOCK INDUSTRIES INCORPORATED. SKYLOCK INDUSTRIES INCORPORATED RESERVES ALL PATENT, PROPRIETARY, DESIGN MANUFACTURING, REPRODUCTION, USE AND SALES RIGHTS THERE TO, AND TO ANY ARTICLE DISCLOSED THEREIN EXCEPT TO THE EXTENT RIGHTS ARE EXPRESSLY GRANTED TO OTHERS. THE FOREGOING DOES NOT APPLY TO VENDOR PROPRIETARY PARTS.


REVISIONS				
ZONE	LTR	DESCRIPTION	DATE	APPROVED
	NC	PRODUCTION RELEASE	2-15-94	T. CSIK

- NOTES: UNLESS OTHERWISE SPECIFIED.
1. REMOVE ALL BURRS AND BREAK SHARP EDGES.
 2. MAT'L: RETAINER; ALUM. ALLOY, ALL OTHER PARTS; 300 SERIES CRES.
 3. FINISH: ALUM.; ANODIZE, CRES PARTS; PASSIVATE.
 4. DECORATIVE FINISH: RETAINER; SATIN BUFF AND CLEAR ANODIZE PER MIL-A-8625.
 5. STATIC LOAD: 575 LBS. MAX.



1. 50	-413	RETAINER ASSY	<180° ROTATION>	
2. 00	-412	RETAINER ASSY	<90° RIGHT HAND>	
2. 00	-411	RETAINER ASSY	<90° LEFT HAND>	
. 90	-410	RETAINER ASSY	<90° RIGHT HAND>	
. 90	-409	RETAINER ASSY	<90° LEFT HAND>	
2. 00	-407	RETAINER ASSY	<180° ROTATION>	
2. 00	-406	RETAINER ASSY	<90° RIGHT HAND>	
2. 00	-405	RETAINER ASSY	<90° LEFT HAND>	
1. 75	-404	RETAINER ASSY	<90° RIGHT HAND>	
1. 75	-403	RETAINER ASSY	<90° LEFT HAND>	
1. 19	-402	RETAINER ASSY	<90° RIGHT HAND>	
1. 19	-401	RETAINER ASSY	<90° LEFT HAND>	

PARTS LIST		DIMENSIONS		MATERIAL		ITEM NO.	
1. 50	-413	RETAINER ASSY	<180° ROTATION>				
2. 00	-412	RETAINER ASSY	<90° RIGHT HAND>				
2. 00	-411	RETAINER ASSY	<90° LEFT HAND>				
. 90	-410	RETAINER ASSY	<90° RIGHT HAND>				
. 90	-409	RETAINER ASSY	<90° LEFT HAND>				
2. 00	-407	RETAINER ASSY	<180° ROTATION>				
2. 00	-406	RETAINER ASSY	<90° RIGHT HAND>				
2. 00	-405	RETAINER ASSY	<90° LEFT HAND>				
1. 75	-404	RETAINER ASSY	<90° RIGHT HAND>				
1. 75	-403	RETAINER ASSY	<90° LEFT HAND>				
1. 19	-402	RETAINER ASSY	<90° RIGHT HAND>				
1. 19	-401	RETAINER ASSY	<90° LEFT HAND>				

UNLESS OTHERWISE SPECIFIED	DRAWN BY T. CSIK	2-15-94	 SKYLOCK INDUSTRIES INCORPORATED MONROVIA CALIFORNIA U. S. A.
DIMENSIONS ARE IN INCHES	CHECKED		
TOLERANCES ON	ENGINEER		
DECIMALS ANGLES DRILLED HOLES	PROJECT		
.X ± .1 ± 0° 30' AND 10387	APPROVAL T. CSIK	2-15-94	1/4 TURN RETAINER
.XX ± .03	APPROVAL		
.XXX ± .010			
DO NOT SCALE THIS DRAWING	USED ON		
MATERIAL - FINISH	USED ON	SIZE C	CODE IDENT. NO. 51941
NEXT ASSY		DRAWING NO. 20885	REV. NC
FINAL ASSY		SCALE 2:1	WT. SHEET 1 OF 1