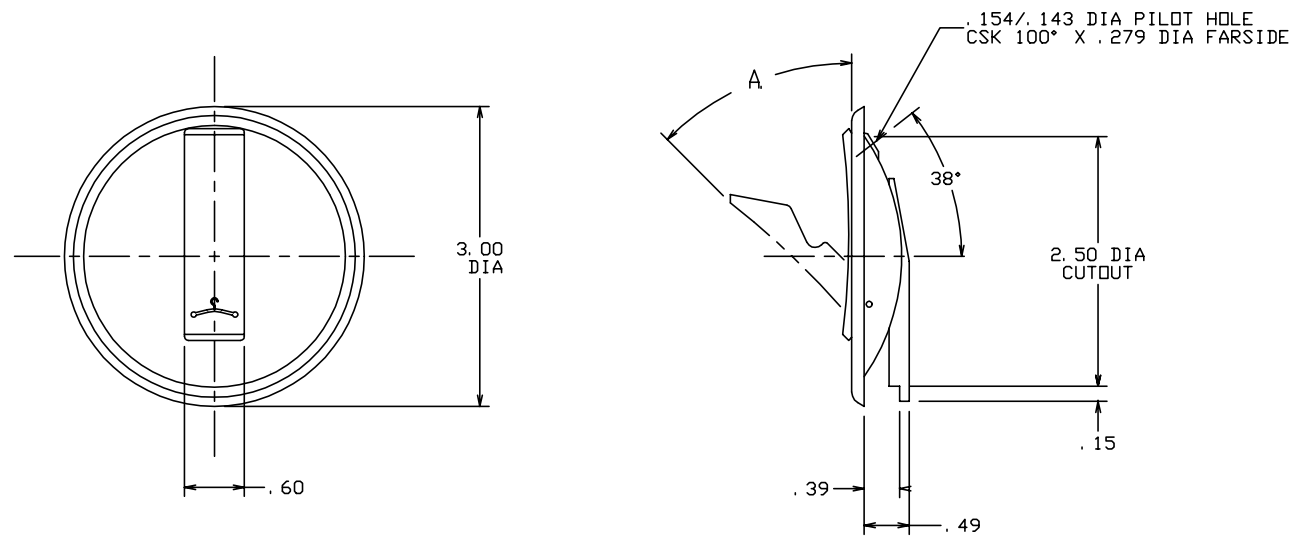


THE INFORMATION AND DESIGN HEREIN WAS ORIGINATED BY AND IS THE PROPERTY OF SKYLOCK INDUSTRIES INCORPORATED. SKYLOCK INDUSTRIES INCORPORATED RESERVES ALL PATENT, PROPRIETARY, DESIGN MANUFACTURING, REPRODUCTION, USE AND SALES RIGHTS THERE TO, AND TO ANY ARTICLE DISCLOSED THEREIN EXCEPT TO THE EXTENT RIGHTS ARE EXPRESSLY GRANTED TO OTHERS. THE FOREGOING DOES NOT APPLY TO VENDOR PROPRIETARY PARTS.

REVISIONS				
ZONE	LTR	DESCRIPTION	DATE	APPROVED
	NC	PRODUCTION RELEASE	2-8-91	JL
	A	ADDED -409	8-6-97	TC
	B	REVISED G/N 4 FINISH FOR -409	11-6-97	TC

- NOTES: UNLESS OTHERWISE SPECIFIED.
- REMOVE ALL BURRS AND BREAK SHARP EDGES.
  - MAT'L: HOOK AND ESCUTCHEON; 6061-T6 ALUM. ALLOY, ALL OTHER COMP'S; ST. STL.
  - FINISH: ALUM. COMP'S; CLEAR ANODIZE, ST. STL. COMP'S; PASSIVATE.
  - DECORATIVE FINISH: SATIN BRUSH (-401 THRU -407), DECORATIVE FINISH (-409 ONLY): POWDER COAT ALL VISIBLE SURFACES AS DEFINED ON CUSTOMER PURCHASE ORDER. CUSTOMER WILL PROVIDE POWDER COAT MATERIAL, AND DEFINE SOURCE FOR PROCESSING.



NO	45°	-409	COAT HOOK		
NO	20°-25°	-407	COAT HOOK		
NO	45°	-405	COAT HOOK		
YES	20°-25°	-403	COAT HOOK		
YES	45°	-401	COAT HOOK		
COAT HOOK SYMBOL	A	PART NO.	DESCRIPTION	MATERIAL SIZE SPECIFICATION	ITEM NO.

PARTS LIST		UNLESS OTHERWISE SPECIFIED		DRAWN BY JL 2-8-91		SKYLOCK INDUSTRIES INCORPORATED MONROVIA CALIFORNIA U. S. A.	
DIMENSIONS ARE IN INCHES		CHECKED				COAT HOOK	
TOLERANCES ON		ENGINEER					
DECIMALS ANGLES DRILLED HOLES		PROJECT					
.X ± .1 ± 0° 30' AND 10387		APPROVAL JL					
.XX ± .03		APPROVAL					
.XXX ± .010							
DO NOT SCALE THIS DRAWING		MATERIAL - FINISH		USED ON		SIZE CODE IDENT. NO. DRAWING NO. REV.	
		NEXT ASSY				C 51941 20694 B	
		FINAL ASSY				SCALE 1: 1 WT. SHEET 1 OF 1	