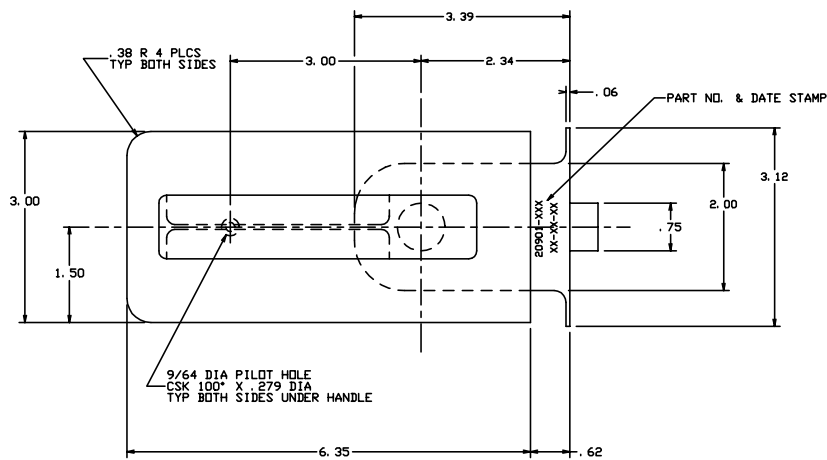
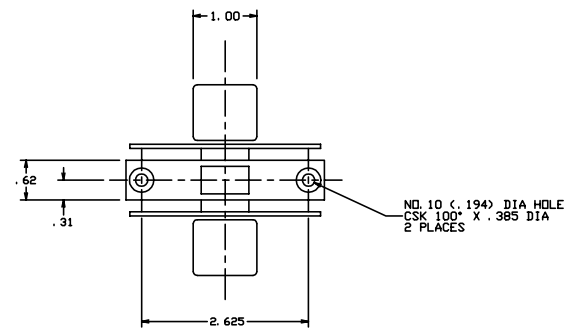
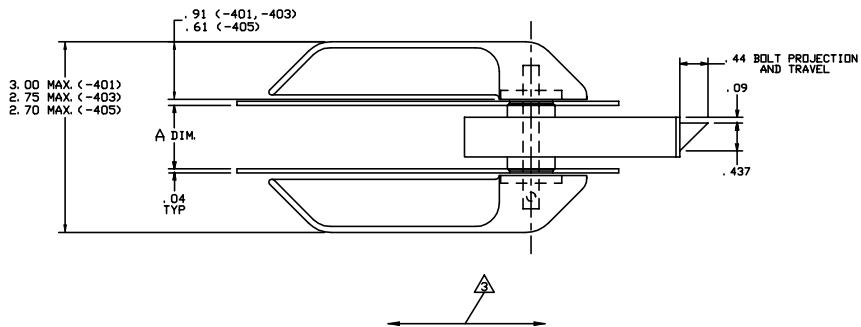


THE INFORMATION AND DESIGN HEREIN WAS ORIGINATED BY AND IS THE PROPERTY OF SKYLOX INDUSTRIES INCORPORATED. SKYLOX INDUSTRIES INCORPORATED RESERVES ALL PATENT, PROPRIETARY, DESIGN MANUFACTURING INFORMATION, AND SALES RIGHTS HEREIN, AND TO ANY ARTICLES DEVELOPED THEREIN EXCEPT TO THE EXTENT RIGHTS ARE EXPRESSLY GRANTED TO OTHERS. THE FOREGOING DOES NOT APPLY TO NON-PATENTABLE MATTER.

NOTES: UNLESS OTHERWISE SPECIFIED.

- MAT'L REF.: HANDLE, FACEPLATE AND CASE; 6061-T6/T651 PER ASTM B-221 OR EQUIV. BUSHING; NYLON 6/6 PER ASTM D-4066-PA 114 OR EQUIV. BOLT; 30% GLASS FILLED NYLON, SPRINGS AND ALL OTHER COMPS; STEEL.
- PROTECTIVE FINISH REF.: ALUM.; CLEAR ANODIZE PER MIL-A-8625, TYPE II, CLASS 1, CRES; PASSIVATE PER AMS-QQ-P-35, TYPE II, OR EQUIV.
- DECORATIVE FINISH REF.: SATIN BRUSH DIRECTION NOTED.
- USE WITH STRIKER NO. 20258.
- PER FAR 45.15. PARTS WILL BE IDENTIFIED WITH:
 - FAA-PMA.
 - SKYLOX IND. INC.
 - PART NO.
 - AIRCRAFT ELIGIBILITY.



-401, 403, -405 LATCH

REVISIONS				
ZONE	LTR	DESCRIPTION	DATE	APPROVED
	NC	PRODUCTION RELEASE	8-9-94	T. C.
	A	ADDED -403	8-18-94	T. C.
	B	PER CUST. REQUEST, DIM. IS 6.35 WAS 6.00, IS SE WAS .97	9-26-94	T. C.
	C	PRODUCT IMPROVEMENT-REVISED INTERNAL BOLT, IS 2482-201 WAS 2482-1	5-16-95	T. C.
	D	SEE ECN D	4/12/99	T. C.

1.00	-405	LATCH	120901-405
.75	-403	LATCH	120901-403
1.00	-401	LATCH	120901-401
PARTS LIST			
UNLESS OTHERWISE SPECIFIED		DRAWN BY	T. CSIK 7-05-94
DIMENSIONS ARE IN INCHES		CHECKED	L. GARCIA 3/29/99
TOLERANCES ON		ENGINEER	T. CSIK 4/18/99
DECIMALS		MFG	P. MATSUOKA 4/20/99
ANGLES		QC	J. VIVIRITO 5/7/99
DRIILLED HOLES		SKYLOX INDUSTRIES INCORPORATED REDONVIA CALIFORNIA	
DO NOT SCALE THIS DRAWING		LATCH-HANDICAP DOOR	
MATERIAL - FINISH		USED ON	SIZE
NEXT ASBY			D 51941
MANUFACTURE IN ACCORDANCE WITH SKYLOX IND. INC., QUALITY CONTROL MANUAL QC 001		CODE IDENT. NO.	20901
		DRAWING NO.	D
		SCALE	1:1
		REV.	D
		HEET	1 OF 1