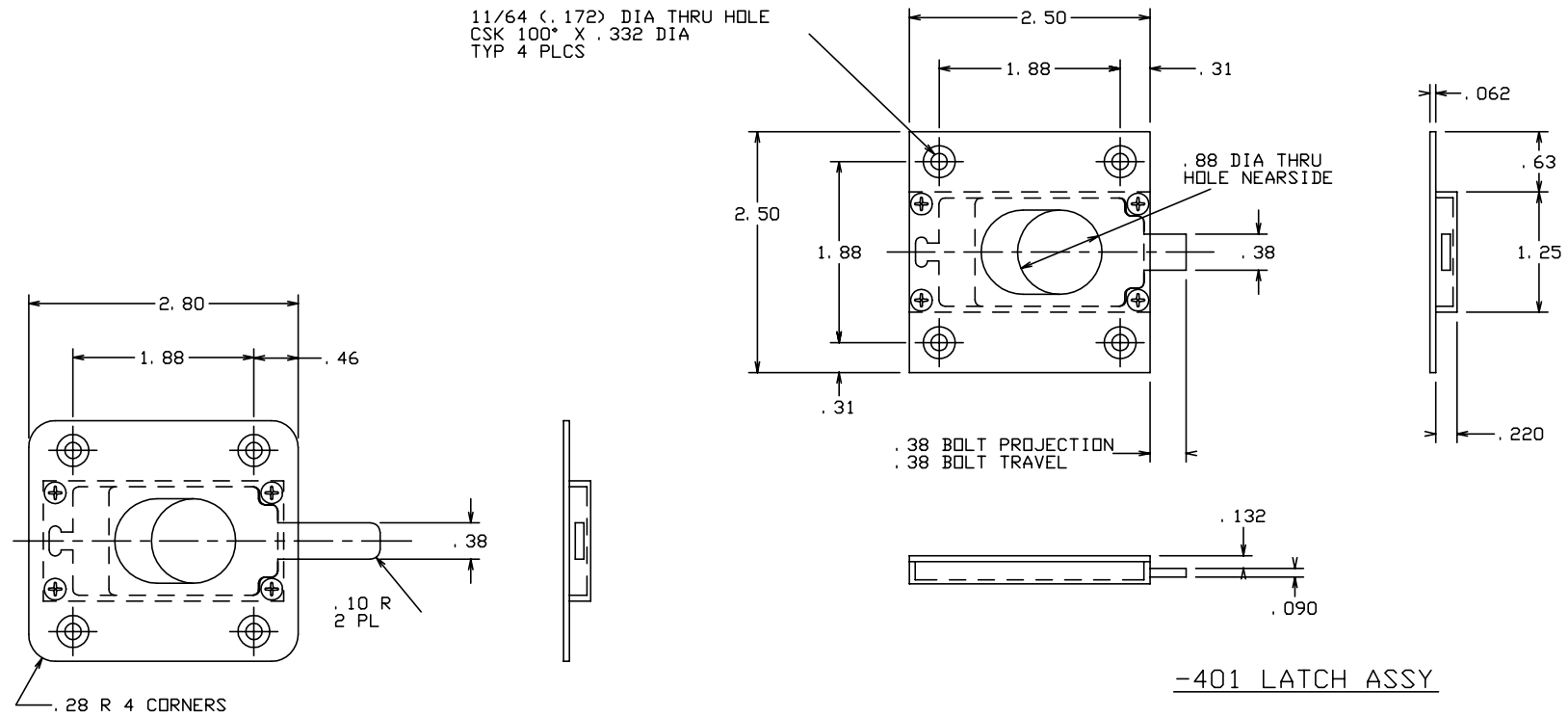



THE INFORMATION AND DESIGN HEREIN WAS ORIGINATED BY AND IS THE PROPERTY OF SKYLOCK INDUSTRIES INCORPORATED. SKYLOCK INDUSTRIES INCORPORATED RESERVES ALL PATENT, PROPRIETARY, DESIGN MANUFACTURING, REPRODUCTION, USE AND SALES RIGHTS THERE TO, AND TO ANY ARTICLE DISCLOSED THEREIN EXCEPT TO THE EXTENT RIGHTS ARE EXPRESSLY GRANTED TO OTHERS. THE FOREGOING DOES NOT APPLY TO VENDOR PROPRIETARY PARTS.

REVISIONS				
ZONE	LTR	DESCRIPTION	DATE	APPROVED
	NC	PRODUCTION RELEASE	9-4-92	T. CSIK
	A	DIM. .132 WAS .092	10-16-92	T. CSIK
	B	ADDED -403, DIM. WAS .88 DIA THRU	3-8-93	T. CSIK
	C	-403 REVISED AND REDRAWN	3-10-93	T. CSIK
	D	-403: ADDED .28 R CORNERS	3-12-93	T. CSIK

- NOTES: UNLESS OTHERWISE SPECIFIED.
1. REMOVE ALL BURRS AND BREAK SHARP EDGES.
 2. MAT'L: CASE; ALUM. ALLOY, BOLT; CRES.
 3. FINISH: CASE; CLEAR ANODIZE, BOLT; PASSIVATE.
 4. BOLT IS SPRING LOADED TO THE ENGAGED POSITION.



	-403	LATCH ASSY				
	-401	LATCH ASSY				
QTY REQD	PART NO.	DESCRIPTION	MATERIAL	SIZE	SPECIFICATION	ITEM NO.
PARTS LIST						
UNLESS OTHERWISE SPECIFIED		DRAWN BY	T. CSIK	9-4-92	 SKYLOCK INDUSTRIES INCORPORATED MONROVIA CALIFORNIA U. S. A.	
DIMENSIONS ARE IN INCHES		CHECKED				
TOLERANCES ON		ENGINEER				
DECIMALS ANGLES DRILLED HOLES		PROJECT				
.X ± .1 ± 0° 30' AND 10387		APPROVAL	T. CSIK	9-4-92	LATCH ASSY	
.XX ± .03		APPROVAL				
.XXX ± .010						
DO NOT SCALE THIS DRAWING			USED ON	SIZE	CODE IDENT. NO.	DRAWING NO.
MATERIAL - FINISH				C	51941	20789
NEXT ASSY			X			D
FINAL ASSY			X			
			SCALE	2:1	WT.	SHEET 1 OF 1