

4

3

2

1


THE INFORMATION AND DESIGN HEREIN WAS ORIGINATED BY AND IS THE PROPERTY OF SKYLOCK INDUSTRIES INCORPORATED. SKYLOCK INDUSTRIES INCORPORATED RESERVES ALL PATENT, PROPRIETARY, DESIGN MANUFACTURING, REPRODUCTION, USE AND SALES RIGHTS THERE TO, AND TO ANY ARTICLE DISCLOSED THEREIN EXCEPT TO THE EXTENT RIGHTS ARE EXPRESSLY GRANTED TO OTHERS. THE FOREGOING DOES NOT APPLY TO VENDOR PROPRIETARY PARTS.

REVISIONS				
ZONE	LTR	DESCRIPTION	DATE	APPROVED
	NC	PRODUCTION RELEASE	6-25-98	T. C.

NOTES: UNLESS OTHERWISE SPECIFIED.

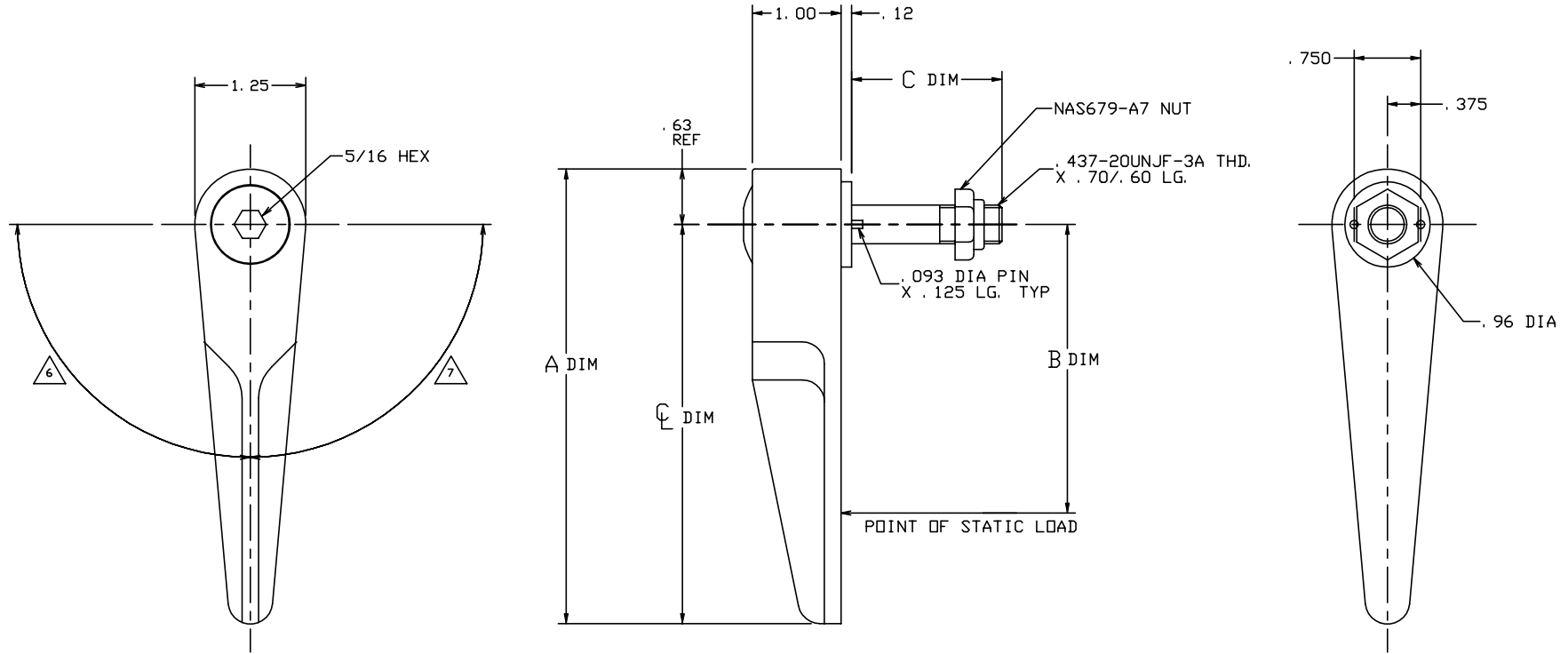
1. REMOVE ALL BURRS AND BREAK SHARP EDGES.
2. MAT'L: TURN; 7075-T6 ALUM. ALLOY, STUD & CAM; 17-4PH CRES H. T. H900 PER MIL-H-6875, OTHER COMPONENTS; CRES.
3. FINISH: CRES; PASSIVATE PER QQ-P-35.
4. DECORATIVE FINISH: BRIGHT POLISH, AND CANDY APPLE RED ANODIZE PER MIL-A-8625, TYPE II, CLASS 2.
5. DECORATIVE FINISH: SATIN BRUSH, AND CLEAR ANODIZE PER MIL-A-8625, TYPE II, CLASS 1.
6. ROTATION: 90 DEGREES LEFT HAND.
7. ROTATION; 90 DEGREES RIGHT HAND.
8. STATIC LOAD: 2,400 LBS MAX.
9. DECORATIVE FINISH: GLASS BEAD PEEN HEAD OF STUD ONLY.
10. STATIC LOAD ESTABLISHED BY QUALIFICATION TEST.
11. SHAFT NEEDS NO TORQUE ADJUSTMENT; TIGHTEN SHAFT AS MUCH AS POSSIBLE WHEN INSTALLING RETAINER.
12. THREADS COATED WITH VC-3 VIBRATITE.

C DIM	B DIM	A DIM	Q DIM	PART NO.	DESCRIPTION	MATERIAL	SIZE	SPECIFICATION
3.11	3.25	5.12	4.50	-6	RETAINER			(871815-406)
3.11	3.25	5.12	4.50	-5	RETAINER			(871815-405)
3.11	3.25	5.12	4.50	-4	RETAINER			(871815-404)
3.11	3.25	5.12	4.50	-3	RETAINER			(871815-403)
2.61	3.25	5.12	4.50	-2	RETAINER			(871815-402)
2.61	3.25	5.12	4.50	-1	RETAINER			(871815-401)


PARTS LIST			
UNLESS OTHERWISE SPECIFIED	DRAWN BY T. CSIK	6-25-98	 SKYLOCK INDUSTRIES INCORPORATED MONROVIA CALIFORNIA U. S. A.
DIMENSIONS ARE IN INCHES	CHECKED		
TOLERANCES ON	ENGINEER		
DECIMALS ANGLES DRILLED HOLES	PROJECT		
.X ± .1 ± 0° 30' AND 10387	APPROVAL		
.XX ± .03			1/4 TURN RETAINER
.XXX ± .010			
DO NOT SCALE THIS DRAWING	APPROVAL		
MATERIAL - FINISH	USED ON	SIZE	CODE IDENT. NO.
NEXT ASSY		C	51941
FINAL ASSY		SCALE	DRAWING NO.
		NONE	20960
		WT.	REV.
			NC
		SHEET	1 OF 2

THE INFORMATION AND DESIGN HEREIN WAS ORIGINATED BY AND IS THE PROPERTY OF SKYLOCK INDUSTRIES INCORPORATED. SKYLOCK INDUSTRIES INCORPORATED RESERVES ALL PATENT, PROPRIETARY, DESIGN MANUFACTURING, REPRODUCTION, USE AND SALES RIGHTS THERE TO, AND TO ANY ARTICLE DISCLOSED THEREIN EXCEPT TO THE EXTENT RIGHTS ARE EXPRESSLY GRANTED TO OTHERS. THE FOREGOING DOES NOT APPLY TO VENDOR PROPRIETARY PARTS.

REVISIONS				
ZONE	LTR	DESCRIPTION	DATE	APPROVED
		SEE SHT. 1		



TYPICAL RETAINER


SKYLOCK INDUSTRIES INCORPORATED
 MONROVIA CALIFORNIA U. S. A.

1/4 TURN RETAINER

SIZE	CODE IDENT. NO.	DRAWING NO.	REV.
C	51941	20960	NC
SCALE	NONE	VT.	SHEET 2 OF 2