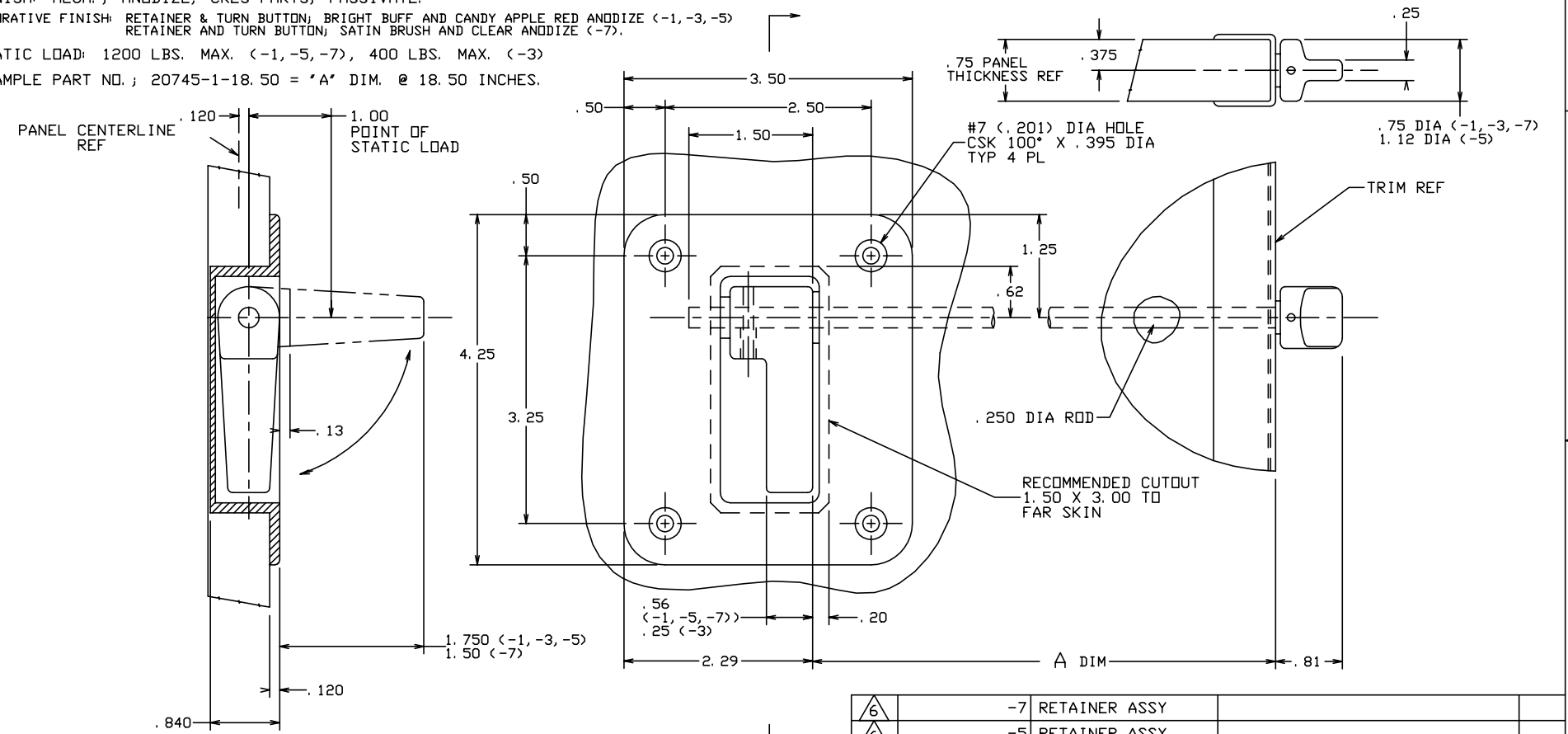


THE INFORMATION AND DESIGN HEREIN WAS ORIGINATED BY AND IS THE PROPERTY OF SKYLOCK INDUSTRIES INCORPORATED. SKYLOCK INDUSTRIES INCORPORATED RESERVES ALL PATENT, PROPRIETARY, DESIGN MANUFACTURING, REPRODUCTION, USE AND SALES RIGHTS THERE TO, AND TO ANY ARTICLE DISCLOSED THEREIN EXCEPT TO THE EXTENT RIGHTS ARE EXPRESSLY GRANTED TO OTHERS. THE FOREGOING DOES NOT APPLY TO VENDOR PROPRIETARY PARTS.

REVISIONS				
ZONE	LTR	DESCRIPTION	DATE	APPROVED
	NC	PRODUCTION RELEASE	10-31-91	T. CSIK
	A	ADDED -3	7-30-92	T. CSIK
	B	ADDED -5	7-30-93	T. CSIK
	C	ADDED -7	7-3-95	T. CSIK

- NOTES: UNLESS OTHERWISE SPECIFIED.
- REMOVE ALL BURRS AND BREAK SHARP EDGES.
 - MAT'L: RETAINER, TURN BUTTON, MOUNTING PLATE, ROD; ALUM. ALLOY, ALL OTHER PARTS; 300 SERIES CRES.
 - FINISH: ALUM.; ANODIZE, CRES PARTS; PASSIVATE.
 - DECORATIVE FINISH: RETAINER & TURN BUTTON; BRIGHT BUFF AND CANDY APPLE RED ANODIZE (-1, -3, -5) RETAINER AND TURN BUTTON; SATIN BRUSH AND CLEAR ANODIZE (-7).
 - STATIC LOAD: 1200 LBS. MAX. (-1, -5, -7), 400 LBS. MAX. (-3)
 - EXAMPLE PART NO.; 20745-1-18.50 = 'A' DIM. @ 18.50 INCHES.



6	-7	RETAINER ASSY				
6	-5	RETAINER ASSY				
6	-3	RETAINER ASSY				
6	-1	RETAINER ASSY				
A DIM	PART NO.	DESCRIPTION	MATERIAL	SIZE	SPECIFICATION	ITEM NO.

PARTS LIST		UNLESS OTHERWISE SPECIFIED		DRAWN BY T. CSIK 10-31-91		SKYLOCK INDUSTRIES INCORPORATED MONROVIA CALIFORNIA U. S. A.	
DIMENSIONS ARE IN INCHES		CHECKED				1/2 CART RETAINER ASSY	
TOLERANCES ON		ENGINEER					
DECIMALS ANGLES DRILLED HOLES		PROJECT					
.X ± .1 ± 0° 30' AND 10387		APPROVAL T. CSIK 10-31-91					
.XX ± .03		APPROVAL				SIZE CODE IDENT. NO. DRAWING NO. REV.	
.XXX ± .010		DO NOT SCALE THIS DRAWING				C 51941 20745 C	
MATERIAL - FINISH		USED ON		SCALE 1:1		VT. SHEET 1 OF 1	
NEXT ASSY							
FINAL ASSY							