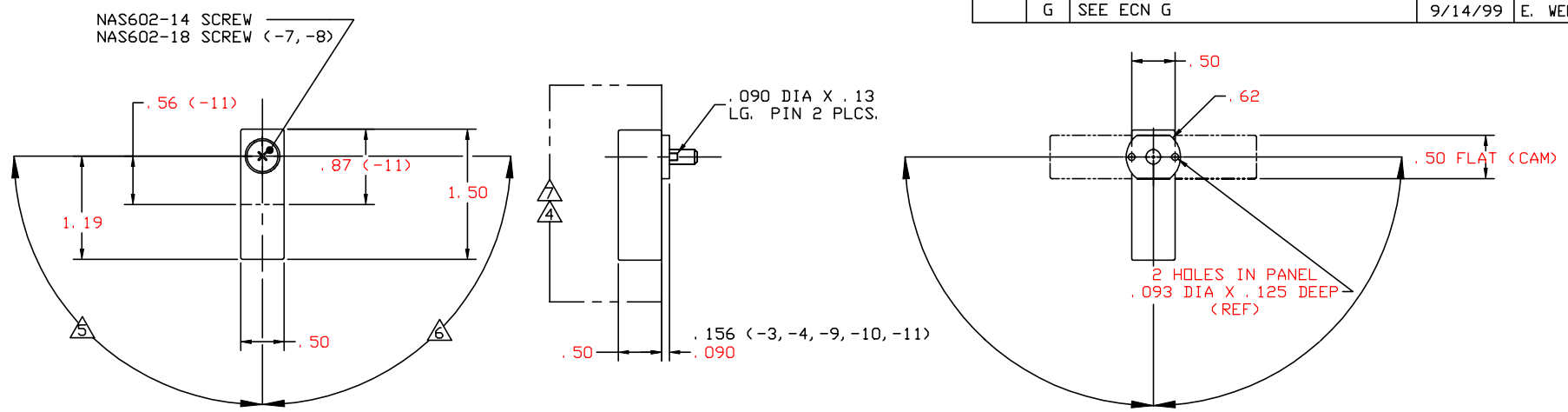


THE INFORMATION AND DESIGN HEREIN WAS ORIGINATED BY AND IS THE PROPERTY OF SKYLOCK INDUSTRIES INCORPORATED. SKYLOCK INDUSTRIES INCORPORATED RESERVES ALL PATENT, PROPRIETARY, DESIGN MANUFACTURING, REPRODUCTION, USE AND SALES RIGHTS THERE TO, AND TO ANY ARTICLE DISCLOSED THEREIN EXCEPT TO THE EXTENT RIGHTS ARE EXPRESSLY GRANTED TO OTHERS. THE FOREGOING DOES NOT APPLY TO VENDOR PROPRIETARY PARTS.

REVISIONS				
ZONE	LTR	DESCRIPTION	DATE	APPROVED
	B	SEE DCN 10905	6/27/85	PAS
	C	SEE DCN 10955	5/22/86	PAS
	D	DIM CHANGE DCN 11048	3/13/89	TS
	E	SEE ECN E	2/1/99	T. CSIK
	F	SEE ECN F		
	G	SEE ECN G	9/14/99	E. WELSH



-1 THRU -11 RETAINER

- 12. APPLICABLE TO FAA-PMA REPLACEMENT OR MODIFICATION PARTS ONLY. PER FAR 45.15, PARTS WILL BE IDENTIFIED WITH:
 1. FAA-PMA.
 2. SKYLOCK IND. INC.
 3. PART NO.
 4. AIRCRAFT INSTALLATION ELIGIBILITY.
 - 11. REMOVED
 - 10. THE FOLLOWING STATIC LOAD IS FOR REFERENCE USE ONLY. IT IS PROVIDED FOR CUSTOMER ENGINEERING TO DETERMINE THE GENERAL SUITABILITY OF THE PRODUCT FOR ITS INTENDED USE. ALTHOUGH SKYLOCK IS PROVIDING THE REFERENCE STATIC LOAD, THE CUSTOMER IS ULTIMATELY RESPONSIBLE FOR CERTIFICATION OF THE PRODUCT FOR ITS SPECIFIC APPLICATION. REFERENCE STATIC LOAD: 600 LBS. MAX.
 - 9. REMOVED
 - 8. REMOVED
 - △ DECORATIVE FINISH REF.: BRIGHT POLISH, AND ANODIZE PER MIL-A-8625, TYPE II, CLASS 2 OR EQUIV, DYED CANDY APPLE RED, IS STANDARD FOR -5, -6, -9, -10, -11.
 - △ DETENT 90° TO THE RIGHT AND STOP.
 - △ DETENT 90° TO THE LEFT AND STOP.
 - △ DECORATIVE FINISH REF.: SATIN BUFF LENGTHWISE TO PART SURFACE & CLEAR ANODIZE PER MIL-A-8625, TYPE II, CLASS 1, OR EQUIV.
 - 3. PROTECTIVE FINISH REF.: CAM; PASSIVATE PER AMS-QQ-P-35, TYPE II, OR EQUIV.
 - 2. MAT'L REF.: TURN; 6061-T6/T651 PER ASTM B-221, OR EQUIV.; SCREWS, STEEL ALLOY; ALL OTHER PARTS, CRES 303 CRES, COND. A, PER AMS-5640N OR EQUIV.
 - 1. REMOVE ALL BURRS AND SHARP CORNERS.
- NOTES: UNLESS OTHERWISE SPECIFIED.

QTY REQD	PART NO.	DESCRIPTION	MATERIAL	SIZE	APPLICATION	MAKE FROM
	-11	RETAINER	△△△			120193-11
	-10		△△			120193-10
	-9		△△			120193-9
	-8		△△			120193-8
	-7		△△			120193-7
	-6		△△			120193-6
	-5		△△			120193-5
	-4		△△			120193-4
	-3		△△			120193-3
	-2		△△			120193-2
	-1	RETAINER	△△			120193-1

PARTS LIST

UNLESS OTHERWISE SPECIFIED	DRAWN BY PAS 6/24/85	SKYLOCK INDUSTRIES INCORPORATED MONROVIA CALIFORNIA U. S. A.
DIMENSIONS ARE IN INCHES	CHECKED T. CSIK 2/1/99	
TOLERANCES ON DECIMALS ANGLES DRILLED HOLES	ENGINEER T. CSIK 2/1/99	
.X ± .1 ± 0° 30' AND 10387 .XX ± .03 .XXX ± .010	MFG P. MATSUOKA 2/2/99 QC J. VIVIRITO 2/2/99	

20193 RETAINER

DO NOT SCALE THIS DRAWING	MATERIAL - FINISH	USED ON	SIZE C	CODE IDENT. NO. 51941	DRAWING NO. 20193	REV. G
MANUFACTURE IN ACCORDANCE WITH SKYLOCK IND. INC., QUALITY CONTROL MANUAL QC 001			SCALE 1: 1	WT.	SHEET 1 OF 1	