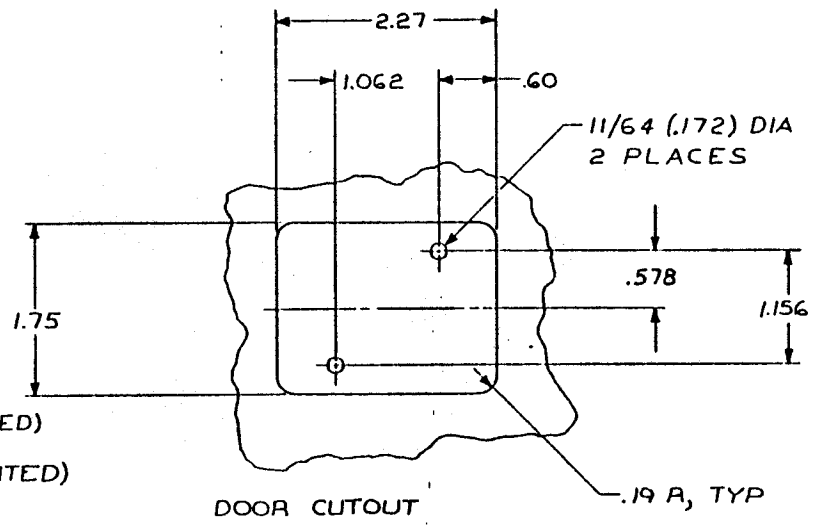
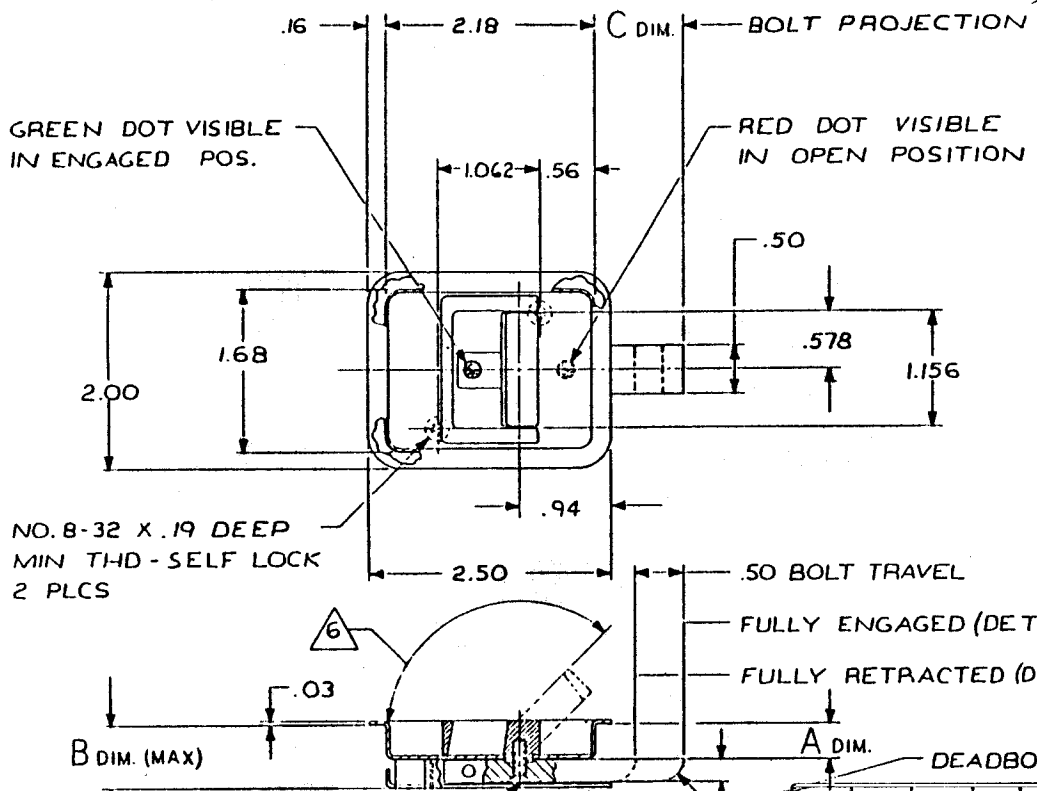


REVISIONS				
SYM	DESCRIPTION		E	BY
	EFFECTIVE ON	DISP EXIST PARTS		
A	ADD -5 & -7		7-10-79	JEE
B	ADD -9 TO -15		1-21-81	JEE
C	ADDED -17		5-25-82	JFF
D	ADDED -19		10-26-82	JFF



7. -3 IS THE SAME AS -1 EXCEPT AS SHOWN

G HANDLE IS SPRING LOADED DOWN

5. BOLT IS DETENTED IN EXTENDED AND RETRACTED POSITIONS

4. STATIC LOAD : 600 LB

3. DECORATIVE FINISH - SATIN BUFF

2. FINISH: ALUM - ANODIZE
CRES - PASSIVATE

MAT'L : HANDLE - ALUM ALLOY
ALL OTHER PARTS - 300 SERIES CRES

NOTES : UNLESS OTHERWISE SPECIFIED

DIM C	DIM A	DIM B	PART NUMBER	DESCRIPTION	MATERIAL OR NOTE
1.00	.49	.64	-19	LATCH ASSY	FLUSH PULL HANDLE (DEADBOLT)
1.12	.19	.49	-17	LATCH ASSY	PROTRUDING PULL HANDLE (DEADBOLT)
.81	.34	.64	-15	LATCH ASSY	FLUSH PULL HANDLE (SLAM)
.81	.19	.49	-13	LATCH ASSY	PROTRUDING PULL HANDLE (SLAM)
.91	.34	.64	-11	LATCH ASSY	FLUSH PULL HANDLE (SLAM)
.91	.19	.49	-9	LATCH ASSY	PROTRUDING PULL HANDLE (SLAM)
.81	.34	.64	-7	LATCH ASSY	FLUSH PULL HANDLE (DEADBOLT)
.81	.19	.49	-6	LATCH ASSY	PROTRUDING PULL HANDLE (DEADBOLT)
.91	.34	.64	-3	LATCH ASSY	FLUSH PULL HANDLE (DEADBOLT)
.91	.19	.49	-1	LATCH ASSY	PROTRUDING PULL HANDLE (DEADBOLT)

APPLICATION		REQD		LIST OF MATERIAL	
NEXT ASSY	USED ON	UNLESS OTHERWISE NOTED DIMENSIONS ARE IN INCHES. TOLERANCES ON DECIMALS XX ± .03 XXX ± .010 ANGLES DRILLED HOLES PER ANSI Q307 SURFACE ROUGHNESS	HEAT TREAT	CONTRACT NO.	SKYLOCK INDUSTRIES, INC. 50. EL MONTE, CALIFORNIA
		FINISH	INSPECT	DRAFTSMAN JEE	
		REF. NO.		CHECKER JFF	LATCH ASSEMBLY PULL HANDLE
				ENGINEER JEE	
				PROD. APPD	SIZE C
				APPROVAL JFF	CODE IDENT NO. 51941
					20316
					SCALE 1/1
					WT CALC
					WT ACT
					SHEET 1 OF 1