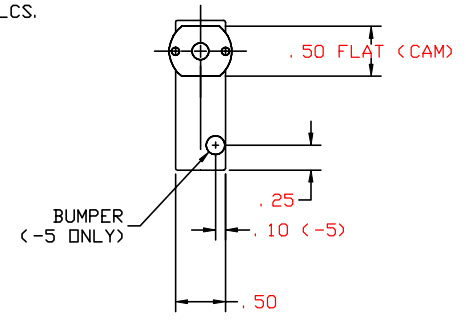
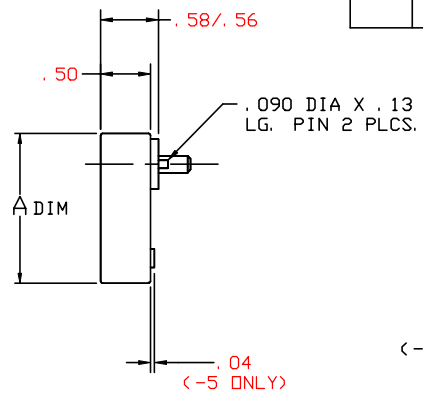
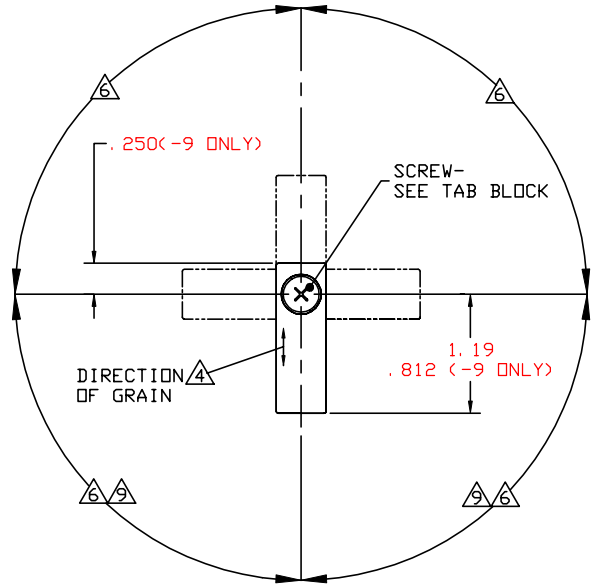


THE INFORMATION AND DESIGN HEREIN WAS ORIGINATED BY AND IS THE PROPERTY OF SKYLOCK INDUSTRIES INCORPORATED. SKYLOCK INDUSTRIES INCORPORATED RESERVES ALL PATENT, PROPRIETARY, DESIGN MANUFACTURING, REPRODUCTION, USE AND SALES RIGHTS THERE TO, AND TO ANY ARTICLE DISCLOSED THEREIN EXCEPT TO THE EXTENT RIGHTS ARE EXPRESSLY GRANTED TO OTHERS. THE FOREGOING DOES NOT APPLY TO VENDOR PROPRIETARY PARTS.

SCREW TAB BLOCK		
A	NAS602-14	OR EQUIV.
B	NAS1190-08P16	OR EQUIV.

REVISIONS				
ZONE	LTR	DESCRIPTION	DATE	APPROVED
	B	REDRAW	5/5/88	TS
	C	ADD-7	2/10/89	TS
	D	ADD -9, ASSIGNED TAB BLOCK	10/30/89	SC
	E	ASSIGNED SCREW TAB BLOCK	4/17/90	SC
	F	SEE DCN 11159	4/20/90	SC
	G	REMOVED .03 MIN. DIM.	12/4/92	TC
	H	ADDED 9 TO -9, NOTES LIST	2/22/94	SC
	J	SEE ECN J	1/27/99	T. CSIK
	K	SEE ECN K		
	L	SEE ECN L	9/14/99	E. WELSH



-1 THRU -9 RETAINER

10. APPLICABLE TO FAA-PMA REPLACEMENT OR MODIFICATION PARTS ONLY. PER FAR 45.15, PARTS WILL BE IDENTIFIED WITH:
1. FAA-PMA.
 2. SKYLOCK IND. INC.
 3. PART NO.
 4. AIRCRAFT INSTALLATION ELIGIBILITY.

- △ ROTATION; 180°, DETENTED EACH 90°.
 - 8. REMOVED.
 - 7. THE FOLLOWING STATIC LOAD IS FOR REFERENCE USE ONLY. IT IS PROVIDED FOR CUSTOMER ENGINEERING TO DETERMINE THE GENERAL SUITABILITY OF THE PRODUCT FOR ITS INTENDED USE. ALTHOUGH SKYLOCK IS PROVIDING THE REFERENCE STATIC LOAD, THE CUSTOMER IS ULTIMATELY RESPONSIBLE FOR CERTIFICATION OF THE PRODUCT FOR ITS SPECIFIC APPLICATION. REFERENCE STATIC LOAD: 600 LBS. MAX.
 - △ DETENT EVERY 90° OF ROTATION.
 - △ DECORATIVE FINISH REF.: BRIGHT POLISH, AND ANODIZE PER MIL-A-8625, TYPE II, CLASS 2, DYED CANDY APPLE RED, OR EQUIV.
 - △ DECORATIVE FINISH REF.: SATIN BRUSH LENGTHWISE TO PART SURFACE AND CLEAR ANODIZE PER MIL-A-8625, TYPE II, CLASS 1, OR EQUIV.
 - 3 FINISH REF.: ALUM; CLEAR ANODIZE PER MIL-A-8625, TYPE II, CLASS 1, OR EQUIV. CRES PARTS; PASSIVATE PER AMS-QQ-P-35, TYPE II, OR EQUIV. SCREW; CAD PLATE PER QQ-P-416, TYPE II, CLASS 2, OR EQUIV.
 - 2. MAT'L REF.: TURN; 6061-T6/T651 PER ASTM B-221, OR EQUIV. ALL OTHER PARTS; 303 CRES, COND. A, PER AMS 5640N OR EQUIV.
 - 1. REMOVE ALL BURRS AND SHARP CORNERS.
- NOTES: UNLESS OTHERWISE SPECIFIED.

QTY REQD	PART NO.	DESCRIPTION	MATERIAL	SIZE	APPLICATION	MAKE FROM
B	1.062	-9 RETAINER	△ △			120194-9
B	1.455	-7 RETAINER	△			120194-7
A	1.50	-5 RETAINER	△			120194-5
A	1.50	-3 RETAINER	△			120194-3
A	1.50	-1 RETAINER	△			120194-1
SCREW	△ DIM					

PARTS LIST		DRAWN BY		ENGINEER		MFG		QC	
UNLESS OTHERWISE SPECIFIED		SINGELAKIS, T		T. CSIK		P. MATSUOKA		J. VIVIRITO	
DIMENSIONS ARE IN INCHES		5/9/88		1/27/99		1/28/99		2/2/99	
TOLERANCES ON		DEAN VO 1/22/99							
DECIMALS ANGLES DRILLED HOLES									
.X ± .1 ± 0° 30' AND 10387									
.XXX ± .03									
.XXX ± .010									
DO NOT SCALE THIS DRAWING									
MATERIAL - FINISH		USED ON		SIZE		CODE IDENT. NO.		DRAWING NO.	
				C		51941		20194	
NEXT ASSY								REV. L	
MANUFACTURE IN ACCORDANCE WITH SKYLOCK IND. INC., QUALITY CONTROL MANUAL QC.001									
				SCALE		1: 1		SHEET 1 OF 1	



20194 RETAINER