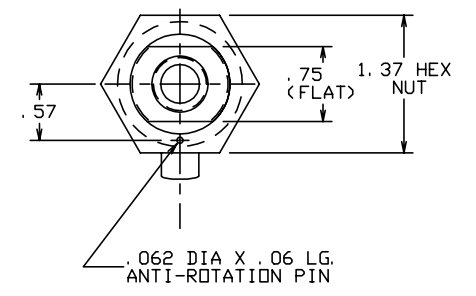
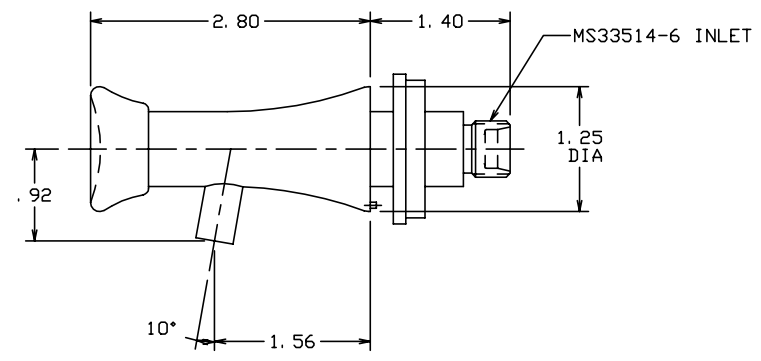
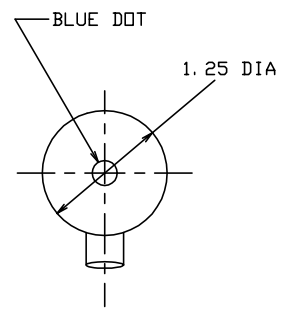



THE INFORMATION AND DESIGN HEREIN WAS ORIGINATED BY AND IS THE PROPERTY OF SKYLOCK INDUSTRIES INCORPORATED. SKYLOCK INDUSTRIES INCORPORATED RESERVES ALL PATENT, PROPRIETARY, DESIGN MANUFACTURING, REPRODUCTION, USE AND SALES RIGHTS THERE TO, AND TO ANY ARTICLE DISCLOSED THEREIN EXCEPT TO THE EXTENT RIGHTS ARE EXPRESSLY GRANTED TO OTHERS. THE FOREGOING DOES NOT APPLY TO VENDOR PROPRIETARY PARTS.

REVISIONS				
ZONE	LTR	DESCRIPTION	DATE	APPROVED
	NC	PRODUCTION RELEASE	4-9-97	T. CSIK

- NOTES: UNLESS OTHERWISE SPECIFIED.
- MAT'L: SPIGOT BODY, AND BUTTON; BRASS, VALVE ASSY; CRES.
  - DECORATIVE FINISH: BRIGHT CHROME PLATE.



-401		SPIGOT ASSY					
QTY REQD	PART NO.	DESCRIPTION	MATERIAL	SIZE	SPECIFICATION	ITEM NO.	
PARTS LIST							
UNLESS OTHERWISE SPECIFIED		DRAWN BY T. CSIK		4-9-97		 SKYLOCK INDUSTRIES INCORPORATED MONROVIA CALIFORNIA U. S. A.	
DIMENSIONS ARE IN INCHES		CHECKED					
TOLERANCES ON		ENGINEER					
DECIMALS ANGLES DRILLED HOLES		PROJECT					
.X ± .1 ± 0° 30' AND 10387		APPROVAL T. CSIK		4-9-97		SPIGOT ASSY	
.XX ± .03		APPROVAL					
.XXX ± .010							
DO NOT SCALE THIS DRAWING							
MATERIAL - FINISH		USED ON		SIZE	CODE IDENT. NO.	DRAWING NO.	REV.
NEXT ASSY				C	51941	90093	NC
FINAL ASSY				SCALE 1/1 & NOTED		SHEET 1 OF 1	

FLUID MEDIA	TYPE	OPERATING PRESSURE	OPERATING TEMP.	FLOW
POTABLE WATER	SELF VENTING & BLEEDING	0-120 PSIG	35°F TO 225°F	100/140 OZ. /MIN. AT 70°F AND 30 P. S. I. INLET PRESSURE