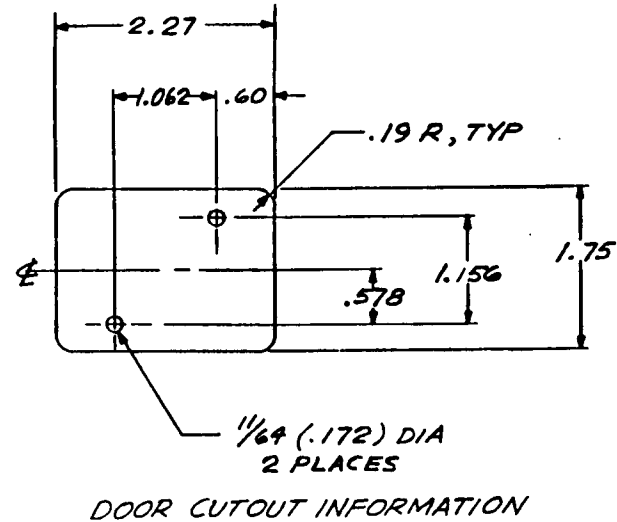
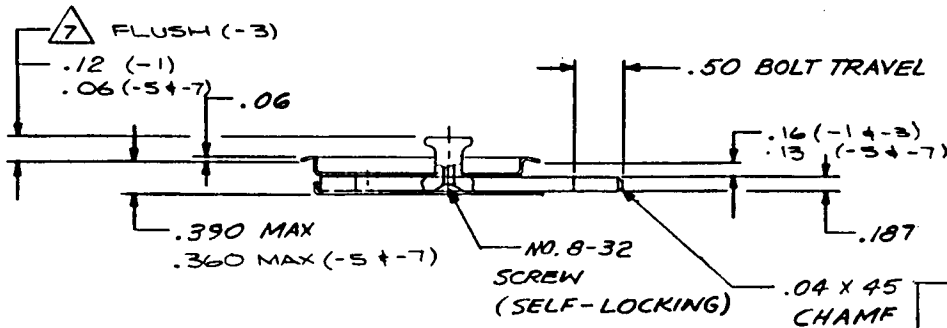
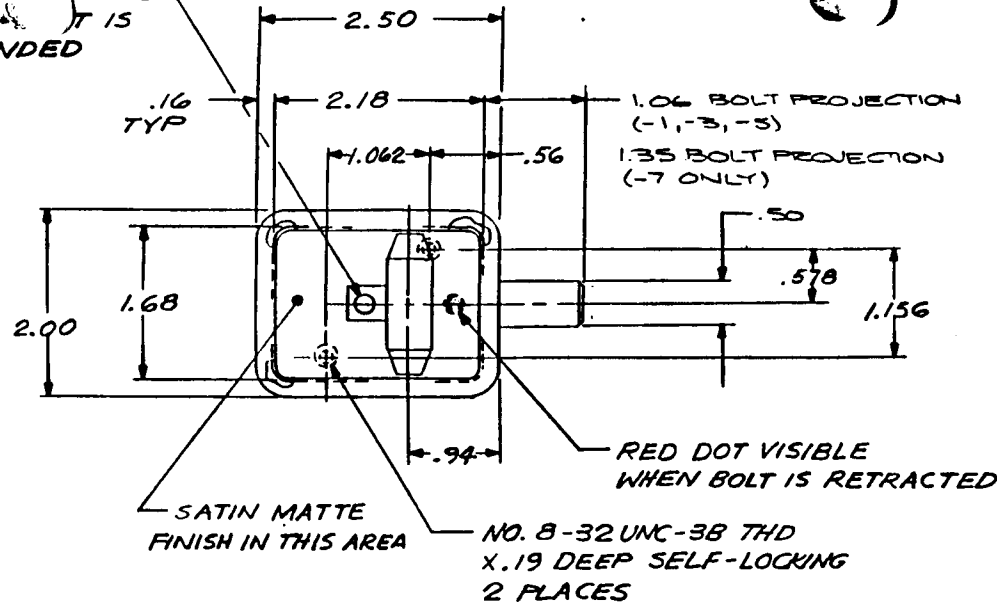


GREEN VISIBLE WHEN HANDLE IS EXTENDED



SYM	DESCRIPTION		DATE	BY
	EFFECTIVE ON	DISP EXIST PARTS		
A	SEE DCN 10658		1-19-83	MM
B	ADDED -5		6-9-92	KL
C	ADDED -7		8-27-92	KL
D	REVISED / CLARIFIED -5 & -7		11-3-93	KL
E	.16 (-1 + -3), .13 (-3 + -7) WERE .19, .16		12-1-93	KL

7 HANDLE FLUSH WITH CASE FOR -3 ONLY

6. BOLT IS DETENTED IN EXTENDED AND RETRACTED POSITIONS

5. STATIC LOAD: 600 LB

4. DECORATIVE FINISH: SATIN BUFF & SATIN MATTE.

3. FINISH: HANDLE; NONE  
CRES PARTS; PASSIVATED

2. MATL: HANDLE; ALUM ALLOY 6061-T6  
ALL OTHER PARTS; 300 SERIES CRES

1. REMOVE BURRS AND BREAK SHARP CORNERS

NOTES: UNLESS OTHERWISE SPECIFIED

	-7	LATCH	S/A -1 EXCEPT AS NOTED
	-5	LATCH	S/A -1 EXCEPT AS NOTED
	-3	LATCH	7 S/A -1 EXCEPT AS NOTED
	-1	LATCH	
	PART NUMBER	DESCRIPTION	MATERIAL OR NOTE

REQD				LIST OF MATERIAL			
UNLESS OTHERWISE NOTED DIMENSIONS ARE IN INCHES. TOLERANCES ON DECIMALS XX ± .03 XXX ± .010 ANGLES ± 0.50° DRILLED HOLES PER ANSI10307				CONTRACT NO.			
SURFACE ROUGHNESS				DRAFTSMAN KS		1/2/86	
HEAT TREAT				CHECKER DLS		1/3/86	
FINISH				ENGINEER M. J. K.		1/2/86	
INSPECT				PROD. APPD			
REF. NO.				APPROVAL		1/13/86	
NEXT ASSY		USED ON		SIZE		CODE IDENT NO.	
				C		51941	
APPLICATION				SCALE 1/1			
				WT CALC		WT ACT	
				SHEET 1 OF 1		20345	

