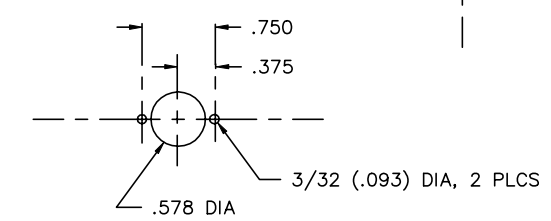
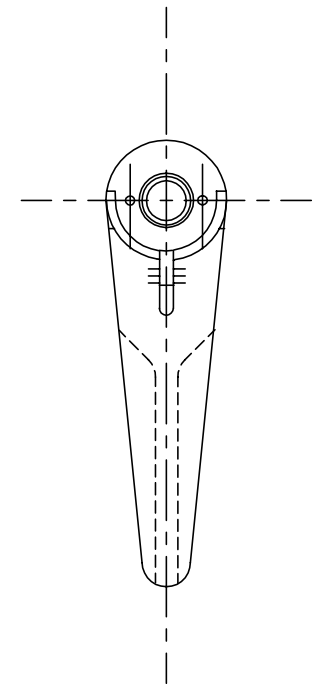
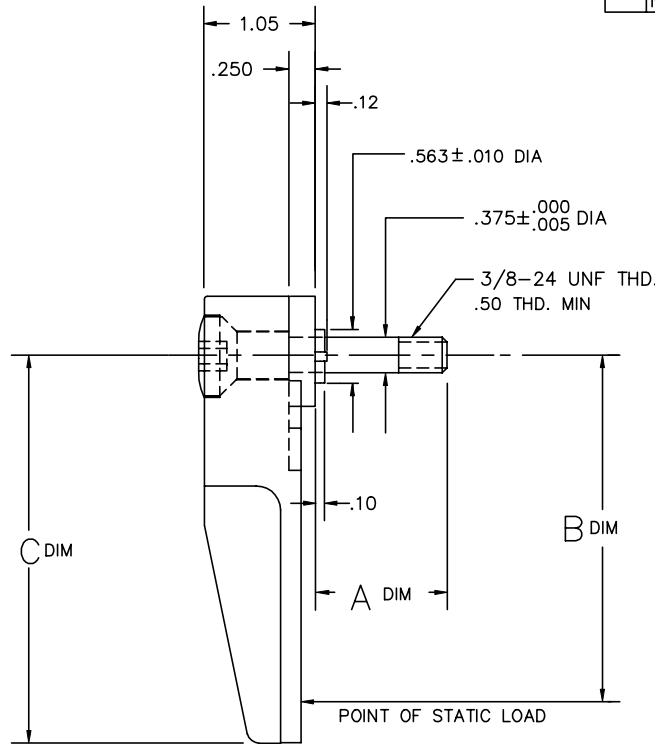
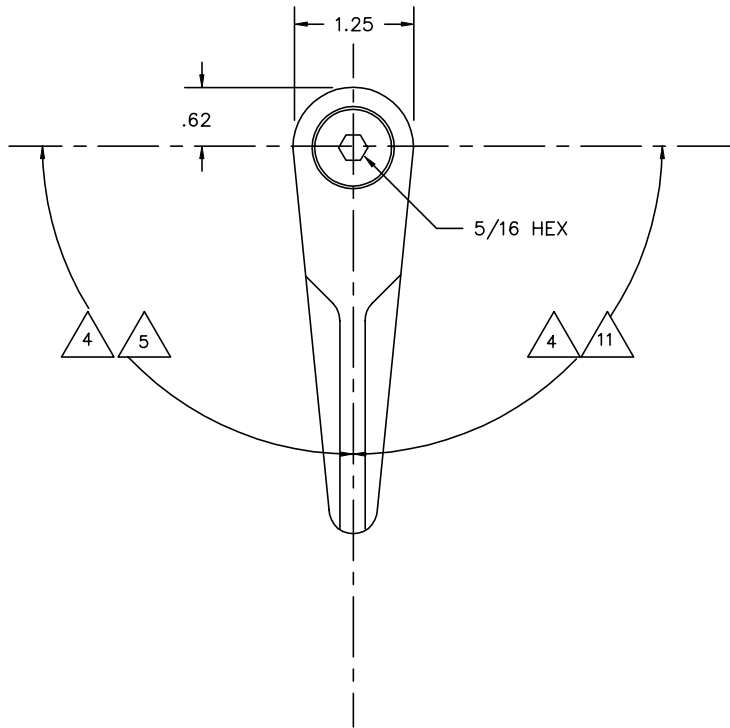


THE INFORMATION AND DESIGN HEREIN WAS ORIGINATED BY AND IS THE PROPERTY OF SKYLOCK INDUSTRIES INCORPORATED. SKYLOCK INDUSTRIES INCORPORATED RESERVES ALL PATENT, PROPRIETARY, DESIGN MANUFACTURING, REPRODUCTION, USE AND SALES RIGHTS THERE TO, AND TO ANY ARTICLE DISCLOSED THEREIN EXCEPT TO THE EXTENT RIGHTS ARE EXPRESSLY GRANTED TO OTHERS. THE FOREGOING DOES NOT APPLY TO VENDOR PROPRIETARY PARTS.

REVISIONS:				
ZONE	LTR	DESCRIPTION	DATE	APPROVED
NC		PRODUCTION RELEASE	9/25	SC



SUGGESTED PANEL CUTOUT

- 11. ROTATION: 90° RIGHT HAND
- 10. ALL RETAINERS HAVE THREADS COATED WITH VC-3 ( VISCIOUS COATING VIBRATITE )
- 9. RETAINER DOES NOT NEED ANY TORQUE ADJUSTMENT; TIGHTEN SHAFT AS MUCH AS POSSIBLE UPON INSTALLATION
- 8. STATIC LOAD ESTABLISHED BY QUALIFICATION TEST
- △7. STATIC LOAD: 8000 LBS MAX
- △6. STATIC LOAD: 3250 LBS MAX
- △5. ROTATION: 90° LEFT HAND
- △4. ROTATION: 180°, DETENTED EVERY 90°
- 3. FINISH: SATIN BRUSH
- 2. MAT'L: TURN; 303 CRES ; ALL OTHER PARTS; CRES

1. REMOVE ALL BURRS AND BREAK SHARP EDGES.  
 NOTES: UNLESS OTHERWISE SPECIFIED.

5.12	4.00	1.24		-5	RETAINER	△1 / △6	
2.74	1.62	1.24		-3	RETAINER	△4 / △7	
5.12	4.00	1.24		-1	RETAINER	△5 / △6	
C DIM	B DIM	A DIM	QTY REQ'D	PART / IDENT NO.	DESCRIPTION	MATERIAL / SPECIFICATION	ITEM NO.

UNLESS OTHERWISE SPECIFIED: DIMENSIONS ARE IN INCHES		CONTRACT NO.		SKYLOCK INDUSTRIES INCORPORATED MONROVIA, CALIFORNIA, USA
DECIMALS XXX ± .03 XXX ± .010 DO NOT SCALE DRAWING	TOLERANCES ANGULAR ± 0.30°	DRAWN BY S. CSIK	DATE	
NEXT ASSY	FINAL ASSY	CHECK		<h1>1/4 TURN RETAINER</h1>
USED ON		DESIGN S. CSIK		
FINISH	ACT WT	CALC WT		
CUSTOMER		DESIGN ACTIVITY	SCALE NONE	SIZE C
			RELEASE DATE 9/25/90	FSCM NO. 51941
			SHEET 1 OF 1	DRAWING NO. 20685
				REV. NC

SHEET 1 OF 1 REV. NC 20685 DRAWING NO.